



BIRMINGHAM CITY  
University



# POSTGRADUATE

OPEN DAY PROGRAMME 2019

City Centre Campus  
Sunday 24 November  
10am - 3pm  
[bcu.ac.uk/opendays](http://bcu.ac.uk/opendays)

## CONTENTS

- 04 How to make the most of your day
- 06 Talks and tours
- 08 Postgraduate study at BCU
- 10 Jaspreet's story

### SUBJECTS

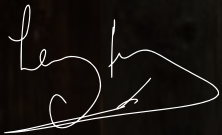
- 12 Art, Design and Media
- 14 Business, Law and Social Sciences
- 15 Computing, Engineering and the Built Environment
  
- 16 Advice and Guidance Hub
- 18 Campus map

# WELCOME

I'd like to give you a warm welcome to Birmingham City University. I am immensely proud to be the Chancellor of this vibrant and diverse institution.


The best way to find out what's happening at this University and across the city is to come and see us, which is why our open days are such great events. You can see our facilities, get the inside track from current students and ask our staff about any queries you may have.

Have a fantastic day and I hope we'll be welcoming you as a student soon.



Sir Lenny Henry, Chancellor, Birmingham City University



 FREE WIFI  
BCU OPEN WIFI

# HOW TO MAKE THE MOST OF YOUR DAY

## MAKE A PLAN

Take some time to decide what talks, tours and subjects you want to see. Don't forget to plan in some time for a coffee break!



## CHECK IN

Millennium Point B4 7XG  
To collect your free Open Day bag and refreshment voucher.

**For Art & Design courses,**  
Margaret Street B3 3BX

**For Jewellery courses,**  
St Paul's Square B3 1QU

## ATTEND A BCU WELCOME TALK

Find out what's special about BCU.

Welcome Talks: Page 6

## LEARN MORE ABOUT YOUR COURSE

Find out more about the different subjects we teach in the postgraduate hub or course drop-in sessions.

**Arts, Design and Media: Page 12**  
**Business, Law and Social Sciences: Page 14**  
**Computing, Engineering and the Built Environment: Page 15**



## GO TO A POSTGRADUATE TALK

Find out more about finance, student life and the benefits of a postgraduate degree.

Talks: Page 6



## VISIT OUR ADVICE AND GUIDANCE HUB

Speak to staff for advice on everything from finance to health and wellbeing.

Talks: Page 6

Advice and guidance hub: Page 16

## GRAB A DRINK ON US

Vouchers are valid to use at:

**Millennium Point\*:**  
Restaurant, Level 3

**Parkside Building:**  
Starbucks, Ground floor

**Curzon Building:**  
Restaurant, Ground floor  
Starbucks, Level 1

\*Please note: vouchers cannot be redeemed in the 6/8 Kafe on Level 2 of Millennium point



## KEEP IN TOUCH

Don't worry if you forget to ask anything, you can always give us a call or get in touch on social media.

Useful contacts: Page 20

## MAKE A PLAN

---

---

---

---

---

---

---

---

---

---

### Example...

10 - Course drop in

11 - Welcome talk

12.15 - Coffee break!

1.15 - Master's finance talk

2 - Advice and guidance hub

3 - Food and shopping in town

# TALKS

Advice and support

## BCU WELCOME TALK

ThinkTank Event Suite,  
Level 3, Millennium Point

11 - 11.30am  
12.30 - 1pm

## MASTER'S FINANCE

ThinkTank Event Suite, Level 3,  
Millennium Point

1.15 - 1.45pm

## WRITING YOUR PHD PROPOSAL

ThinkTank Event Suite, Level 3,  
Millennium Point

11.45am - 12.15pm

## PHD FUNDING

ThinkTank Event Suite, Level 3,  
Millennium Point

2 - 2.30pm

## POSTGRADUATE STUDENT LIFE

ThinkTank Event Suite, Level 3,  
Millennium Point

10.15 - 10.45am



# TOURS

Have a look around



## ACCOMMODATION TOURS

Every 15 minutes from 10am  
(tours last 30 minutes).

The last tour leaves at 2.45pm.  
Tours must be booked in advance  
at the accommodation desk.

Level 1, Millennium Point.



## LIBRARY TOURS

Meeting point: Ground floor,  
The Curzon Building

Every 15 minutes from 10am,  
last tour at 2.30pm

# POSTGRADUATE STUDY AT BCU

1 in 7

jobs could require a postgraduate qualification by 2022

UK Commission for Employment and Skills, 2014

90%

Almost 90% of our research was judged to have delivered outstanding, or very considerable external impact

REF 2014

96%

of our postgraduate students were in employment or further study within six months of graduating

DHLE 2016/17

£10,906

Loan available to support with fees and living costs for postgraduate students.

Student Finance England, 2019

£25,700

Doctoral Loan available to support with Postgraduate Research study fees and living costs

Student Finance England, 2019

# JASPREET'S STORY

Attend Jaspreet's talk: **Postgraduate Student Life**  
ThinkTank Events Suite, Level 3, Millennium Point, 10.15 - 10.45am



Jaspreet is an international student from Punjab India and one who has made a huge impact throughout his time at Birmingham City University. He is the former President of BCU's Students' Union and was chosen as one of the top 30 under 30 most inspirational young people in Birmingham. He is also an active member of the British Organisation of Sikh students.

Jaspreet now works for the BCU International Office as their Global Cultural Ambassador and is currently on a patchwork masterclass programme where he learns from MPs and permanent secretaries of the UK government about the various aspects of the civil services and UK Parliament.

"I chose postgraduate study because being an international student, I wanted to develop my specialism in International Human Resource Management. I enjoy learning and being around different cultures, so this course for me was a great way to develop my global mind-set and continue to challenge myself."

## JASPREET SINGH

BA (Hons) Business and Human Resource Management 2016

MA International Human Resource Management 2019

"Studying a postgraduate qualification allows me to critically evaluate various aspects of my subject area, and develop more advanced knowledge on a topic I'm really passionate about."

Jaspreet aspires to finish his studies this year and wants to pursue a PhD in International Human Resource Management. He is really proud to be part of the global and vibrant community at BCU, and this motivates him more in his studies.

*"I enjoy learning and being around different cultures, so this course for me was a great way to develop my global mind-set and continue to challenge myself."*

"BCU has supported my transformation from being a very shy kid at high school to someone who is unafraid to present in front of large audiences. I would say undertaking a postgraduate degree was one of the best decisions I've made, it's been fun and it's definitely been a good step for me."

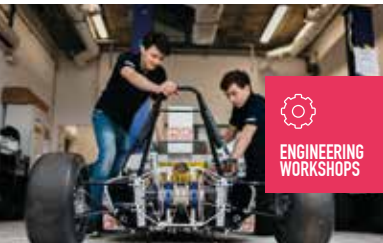
# THE FACILITIES YOU NEED



FILM AND TV STUDIOS



WHEN YOU CHOOSE TO STUDY AT BIRMINGHAM CITY UNIVERSITY, YOU CAN BE CONFIDENT THAT YOUR LEARNING NEEDS ARE OUR TOP PRIORITY.



ENGINEERING WORKSHOPS



CITY TRADING ROOM



TEXTILE STUDIOS



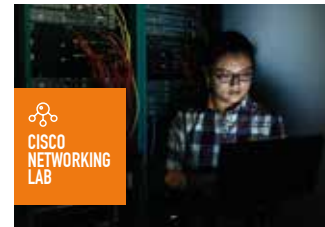
LIBRARY AND LEARNING RESOURCES



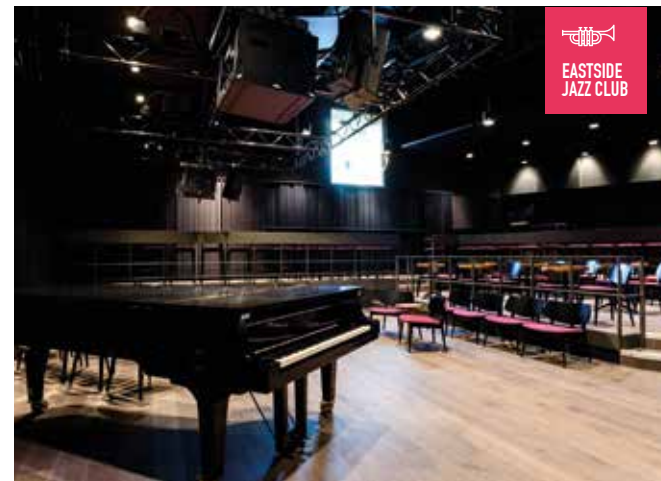
PSYCHOLOGY LABS



PHOTOGRAPHY STUDIOS



CISCO NETWORKING LAB



EASTSIDE JAZZ CLUB



PRINT STUDIOS



LAW COURTS

# ARTS, DESIGN AND MEDIA

## POSTGRADUATE HUB

Thinktank Event Suite, Level 3,  
Millennium Point

## DROP-IN SESSIONS

10 - 11am and 12.30 - 1.30pm.

## CAMPUS AND FACILITIES TOUR

11am to 12noon and 1.30 to 2.30pm

Visit our Postgraduate Hub for one-to-one advice and guidance from staff and current students.

## TALKS ON MASTERS' FINANCE AND POSTGRADUATE STUDENT LIFE

(see page 6 for details).

## FREE TEA AND COFFEE

## ADVICE AND TALKS ON RESEARCH DEGREES AT BCU



## BIRMINGHAM SCHOOL OF ART

Check in at Margaret Street, B3 3BX

Course	Time	Activity	Location
Art and Design: Interdisciplinary Practices	10am – 3pm	Drop-in	F08, Margaret Street
Arts and Education Practices			
Arts and Project Management			
Contemporary Arts China			
Fine Art			



## MARGARET STREET

The Margaret Street building which houses our School of Art is a Grade I listed building and dates back to the 19th century. Take a tour to see our gallery, fine art library and workshops for wood, metal, plaster, fibreglass, ceramics, digital media, print and photography.

## SCHOOL OF JEWELLERY

Check in at 10 St Paul's Square, B3 1QU

Course	Time	Activity	Location
Jewellery and Related Products	10am – 3pm	Drop-in	Foyer, 10 St Paul's Square, B3 1QU
Luxury Jewellery Management			



## ST PAUL'S



Visit our brand new postgraduate building in the heart of the historic Jewellery Quarter including studio space, library and computer lab.

# BUSINESS, LAW AND SOCIAL SCIENCES

## POSTGRADUATE HUB

Thinktank Event Suite, Level 3, Millennium Point, 10am - 3pm

Visit our Postgraduate Hub for one-to-one advice and guidance on all of our postgraduate courses from staff and current students.

TALKS ON MASTER'S FINANCE AND POSTGRADUATE STUDENT LIFE

CAMPUS TOURS

ADVICE AND TALKS ON RESEARCH DEGREES AT BCU

FREE TEA AND COFFEE

Activity	Time	Location
Why study a Master's degree in Accounting and Finance?	12 noon - 12.45pm	C237, The Curzon Building
Master's programmes in Psychology and Criminology - where they can take you	12 noon - 12.45pm	C381, The Curzon Building
Benefits of studying Law at postgraduate level (drop-in session)	10am - 3pm	C373, The Curzon Building
What you get from an MBA/Management Master's degree	12 noon - 12.45pm	C256, The Curzon Building



# COMPUTING, ENGINEERING AND THE BUILT ENVIRONMENT

## POSTGRADUATE HUB

Thinktank Event Suite, Level 3, Millennium Point, 10am - 3pm

Visit our Postgraduate Hub for one-to-one advice and guidance from staff and current students on all of our postgraduate Computing, Engineering and Built Environment courses.

TALKS ON MASTER'S FINANCE AND POSTGRADUATE STUDENT LIFE

(see page 6 for details).

CAMPUS AND FACILITIES TOUR

11am to 12pm and 1.30pm to 2.30pm

FREE TEA AND COFFEE

ADVICE AND TALKS ON RESEARCH DEGREES AT BCU





# ADVICE AND GUIDANCE HUB

HOW WE SUPPORT YOU

## LEVEL 1, MILLENNIUM POINT

### ACCOMMODATION

Ask us about: accommodation options, how to apply, fees and payments and life in student halls.

Accommodation tours: Page 7



## GROUND FLOOR, MILLENNIUM POINT

### CENTRE FOR ACADEMIC SUCCESS

Ask us about: study skills, support and the free tutorials and workshops we offer to students.

### ADMISSIONS

Ask us about: entry requirements, qualifications, offers and decisions and the application process.



### INTERNATIONAL OFFICE

If you're an international student or have an international qualification, ask us about the application process, entry requirements, foundation options and scholarships.

### LIBRARY AND LEARNING RESOURCES

Our libraries provide access to around 62 million resources including books, online journals, e-book chapters and conference proceedings. Ask us about how we can help support your academic interests and learning.



### BCU SPORT

Ask us about all the different sporting opportunities here at BCU, whether you're an Olympic hopeful or just want to try something new.

### SECURITY

Our Security team provide 24 hour, 365 day a year coverage across the University estate. Speak to us for advice, reassurance and safety information.

### STUDENT SUPPORT

We offer advice on childcare, money matters, enablement, health and wellbeing, or any other queries including University procedures.

## ACROSS CITY CENTRE CAMPUS



### STUDENTS' UNION

Ask us about: student life, societies and how we support our students throughout their time here.

Student Life Hub  
Curzon B, Ground Floor, The Curzon Building

### Graduate+

Working towards a Graduate+ award will help you gain new experiences and improve your employability.

Speak to the team and find out more:  
Ground Floor, The Curzon Building



### Careers+

Ask us about: the benefits of a degree, work placements and graduate jobs.

Each Faculty is supported by a specialist Careers+ team, which can be found in the following locations:

**Art, Design and Media:**  
Ground Floor, The Parkside Building

**Business, Law and Social Sciences:**  
Ground Floor, The Curzon Building

**Computing, Engineering and the Built Environment:** Reception, Level 2, Millennium Point



**BIRMINGHAM SCHOOL OF ART**  
Margaret Street,  
B3 3BX (0.9 miles)



**BIRMINGHAM SCHOOL OF JEWELLERY**  
Vittoria Street,  
B1 3PA (1.5 miles)



**ROYAL BIRMINGHAM CONSERVATOIRE**  
Jennens Road, B4 7XR

This building houses our music and theatre courses. It has 100 practice and rehearsal rooms, an organ studio, seven industry-standard recording studios and a 500-seat concert hall.

**THE PARKSIDE BUILDING**  
Cardigan Street, B4 7BD

This building houses the Faculty of Art, Design and Media.

- Campus Art Shop by BCUSU, Level 3
- Coffee shops, ground floor and Level 3

**THE EAGLE AND BALL**

This building houses our Students' Union pub. It is a Grade II listed building, originally built in the Victorian era, now serving food and drink, including a range of craft beers.

**MILLENNIUM POINT CAR PARK**  
B4 7AP

**NEED DIRECTIONS?**

Visit [www.bcu.ac.uk/open-day-directions](http://www.bcu.ac.uk/open-day-directions)

**JENNENS COURT ACCOMMODATION**

**UNIVERSITY LOCKS ACCOMMODATION**

**MILLENNIUM POINT**  
Curzon Street, B4 7XG

This building houses the Faculty of Computing, Engineering and the Built Environment.

- Cash machine, ground floor
- Coffee shop, Level 2
- Restaurant, Level 3
- Faith room, Level 3

Postgraduate Hub, Level 3

Check-in

Welcome talk

Advice and guidance hub

**THE CURZON BUILDING (INC CURZON B)**  
Cardigan Street, B4 7BD

This building houses the Faculty of Business, Law and Social Sciences, the School of English and the New Technology Institute.

- Cash machine, ground floor
- Campus shop, ground floor
- Restaurant, ground floor
- Coffee shops, ground floor and Level 1
- Curzon Library, Level 1

Student Life Hub

TO THE CITY CENTRE, MOOR STREET STATION, NEW STREET STATION AND MOOR STREET BUS INTERCHANGE

**CITY CENTRE CAMPUS MAP**

**Anything you forgot to ask us?  
Don't panic!  
Here is a list of useful contacts:**

Open Day Helpline and Course Enquiries

+44(0)121 331 5595

Admissions +44 (0)121 331 6295


Switchboard (for any other enquiries)


+44 (0)121 331 5000


In case of an emergency, call Security:


+44 (0) 121 331 6969


[www.bcu.ac.uk/postgraduate](http://www.bcu.ac.uk/postgraduate)

 birminghamcityuniversity

 birminghamcityuni

 @myBCU

 myBCU

 myBCU