



BIRMINGHAM CITY  
University

# POSTGRADUATE

## OPEN DAY PROGRAMME 2019

City South Campus  
(Edgbaston)  
Sunday 24 November  
10am - 3pm  
[bcu.ac.uk/opendays](http://bcu.ac.uk/opendays)

## CONTENTS

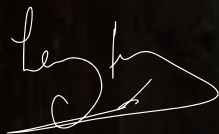
- 04 How to make the most of your day
- 06 Postgraduate study at BCU
- 07 Talks and tours
- 08 Must-see facilities
- 10 Postgraduate course activities
- 12 Advice and Guidance Hub
- 14 Campus map

# WELCOME

I'd like to give you a warm welcome to Birmingham City University. I am immensely proud to be the Chancellor of this vibrant and diverse institution.


The best way to find out what's happening at this University and across the city is to come and see us, which is why our open days are such great events. You can see our facilities, get the inside track from current students and ask our staff about any queries you may have.

Have a fantastic day and I hope we'll be welcoming you as a student soon.



Sir Lenny Henry, Chancellor, Birmingham City University



 FREE WIFI  
BCU OPEN WIFI



# HOW TO MAKE THE MOST OF YOUR DAY

## MAKE A PLAN

Take some time to decide what talks, tours and subjects you want to see. Don't forget to plan in some time for a coffee break!



## CHECK IN

Seacole Extension, B15 3TN  
To collect your free Open Day bag and refreshment voucher.

## ATTEND A BCU WELCOME TALK

Find out what's special about BCU.  
Welcome Talks: Page 7

## LEARN MORE ABOUT YOUR COURSE

Find out more about the different subjects we teach in the postgraduate hub or course drop-in sessions.

Course information: Page 10 - 11



## TAKE AN ACCOMMODATION TOUR

Pre-book onto an accommodation coach tour and see where you could be living next year.

Accommodation tours: Page 7



## VISIT OUR ADVICE AND GUIDANCE HUB

Speak to staff for advice on everything from finance to health and wellbeing.

Talks: Page 7  
Advice and guidance hub: Page 12

## GRAB A DRINK ON US

Vouchers are valid to use at:  
Starbucks, Ground Floor  
Costa, Ground Floor  
Seacole Restaurant, Ground Floor

## KEEP IN TOUCH

Don't worry if you forget to ask anything, you can always give us a call or get in touch on social media.

Useful contacts: Page 16

## CHECK OUT OUR FACILITIES

Explore our state-of-the-art facilities that will help you put your skills into practice.

Facilities: Page 8

## MAKE A PLAN

---

---

---

---

---

---

---

---

---

---

### Example...

10.30 - Meet your course tutor

12 - Welcome talk

12.30 - Coffee break!

1.30 - Postgraduate student life talk

2.30 - Visit Advice and Guidance Hub

# POSTGRADUATE STUDY AT BCU

**1 in 7**

jobs could require a postgraduate qualification by 2022

(UK Commission for Employment and Skills, 2014)

**90%**

Almost 90% of our research was judged to have delivered outstanding, or very considerable external impact

REF 2014

**96%**

of our postgraduate students were in employment or further study within six months of graduating

DHLE 2016/17

**£10,906**

Loan available to support with fees and living costs for postgraduate students

Student Finance England, 2019

**£6K**

Someone with a Master's degree or PhD earns £6,000 more per year or £240,000 over 40 years than someone with just a degree

Graduate Labour Market Statistics 2018

# TALKS AND TOURS

## BCU WELCOME TALK

SCT009, Seacole Building

12 noon - 12.30pm

## ACCOMMODATION TOURS

Every 15 minutes from 10.30am (tour lasts 1 hour).

The last tour leaves at 2.15pm.

Tours must be booked in advance at the accommodation desk.

Mary Seacole Library, Seacole Building

## MILITARY CAREERS DROP-IN

SCT030, Seacole Building

10am - 3pm

## POSTGRADUATE STUDENT LIFE

SCT154, Seacole Building

1.30 - 2pm

## MEET NHS TRUST STAFF

Speak to colleagues from local hospitals about their opportunities

SCT253, Seacole Building

10am - 3pm

## MASTER'S FINANCE

SCT154, Seacole Building

10.45 - 11.15am

## QUIET ROOM

SCT144

Need a break from the bustle of Open Day to absorb all the information you've gathered?

Take a few minutes in our Quiet Room.

## HOW TO FIND YOUR ROOM

SCT157 = SCT | 1 | 57

Building | Floor level | Room number  
e.g. Seacole building | Level 1 | Room 57  
See map on page 14 for further details.

# 9 MUST-SEE FACILITIES

## SPACE (SKILLS PRACTICE AND CARE ENHANCEMENT) SCT265

See where you can practise your clinical skills, and undertake our Anatomy Challenge!



## RADIOGRAPHY SUITE Seacole West (SCT088)

Explore our machinery and experience being a patient and student radiographer in our X-ray room.



## SPEECH AND LANGUAGE THERAPY

SCT109 and SCT110, Seacole Extension

See our specialist clinic and resource rooms and learn more about what speech and language therapists do.



## SPORT

See our exciting sports facilities including our gym, sports therapy clinic and more!



## CENTRE FOR SKILLS AND SIMULATION

SCT051-057, Ground floor, Seacole Building

Visit our wards, operating theatre, home environment room, biomedical engineering lab and skills rooms, and experience our simulation manikins and equipment in action!

A must-see if you're considering health courses with us.



## LEARNING TECHNOLOGIES

SCT010, Ground floor, Seacole Building

Explore the human body and simulated clinical environments through virtual reality and more!



## BIOMEDICAL SCIENCE LABORATORIES

SCT309 and SCT312, Seacole Extension

Come and see our state-of-the-art equipment, watch the experiments, and have a go yourself!

## BIOMEDICAL ENGINEERING LABORATORY

SCT054 (at the far end of the corridor within the Centre for Skills and Simulation)

See how our equipment and technology in biology and computing can impact health.



## EDUCATION

Take our Education facilities tour and see specialist rooms for art, drama, music, science and more!





# SUBJECTS

Find out more about your course

## HEALTH AND EDUCATION POSTGRADUATE HUB

Visit our Postgraduate Hub for one-to-one advice and guidance on all of our postgraduate courses. Staff and current students will be available throughout the day to answer all your questions.

Location:

Open Learning Space, Level 1, Seacole Extension (above check-in) 10am - 3pm

## HEALTH COURSES

Activity	Time	Location
Nursing facilities tour	Regularly from 10.30am Last tour at 2.30pm	Meeting point: Ground floor, Seacole Extension
Return to Practice (Nursing) Drop-In	10am to 2pm	SCT249, Seacole Building

## SPEECH AND LANGUAGE THERAPY COURSES

Activity	Time	Location
Speech and Language Therapy Overview Talk	10.30am - 11.15am 12.30 - 1.15pm	SCT105, Seacole Extension
Speech and Language Therapy information drop-in, activities and qualification check	10am - 3pm	SCT109/110, Seacole Extension

## SOCIAL WORK COURSES

Activity	Time	Location
Social work overview talk	11.30am - 12 noon 2 - 2.30pm	SCT264, Seacole Building

## EDUCATION AND TEACHER TRAINING COURSES

Activity	Time	Location
Primary Education drop-in	10am - 3pm	SCT302
Secondary Education drop-in	10am - 3pm	SCT304
Education facilities tour	Regularly from 10.30am Last tour at 2.30pm	Meeting point: Ground floor, Seacole Extension
Primary education PGCE overview talk	10.30 - 11.15am 12.30 - 1.15pm	SCT050, Seacole Extension
Secondary education overview talk (PGCE and post-compulsory education and training)	11.30am - 12.15pm 1.30 - 2.15pm	SCT050, Seacole Extension



# ADVICE AND GUIDANCE HUB

How we support you

## MARY SEACOLE LIBRARY, SEACOLE BUILDING

### ACCOMMODATION

Ask us about: accommodation options, how to apply, fees and payments and life in student halls.

Accommodation tours: Page 7



## GROUND FLOOR, SEACOLE BUILDING AND EXTENSION

### LIBRARY AND LEARNING RESOURCES

Our libraries provide access to around 62 million resources including books, online journals, e-book chapters and conference proceedings. Ask us about how we can help support your academic interests and learning.



### CAREERS+

Each Faculty is supported by a specialist Careers+ team. Ask us about: the benefits of a degree, work placements and graduate jobs.

### PERSONAL DEVELOPMENT DEPARTMENT (PDD)

Ask us about the academic support we offer, including writing skills, critical analysis, referencing and numeracy.

### INTERNATIONAL OFFICE

If you're an international student or have an international qualification, ask us about the application process, entry requirements, foundation options and scholarships.

### BCU SPORT

Ask us about all the different sporting opportunities here at BCU, whether you're an Olympic hopeful or just want to try something new.

### GRADUATE+

Working towards a Graduate+ award will help you gain new experiences and improve your employability.

### STUDENT SUPPORT

We offer advice on childcare, money matters, enablement, health and wellbeing, or any other queries including University procedures.

### STUDENTS' UNION

Ask us about: student life, societies and how we support our students throughout their time here.



### ADMISSIONS

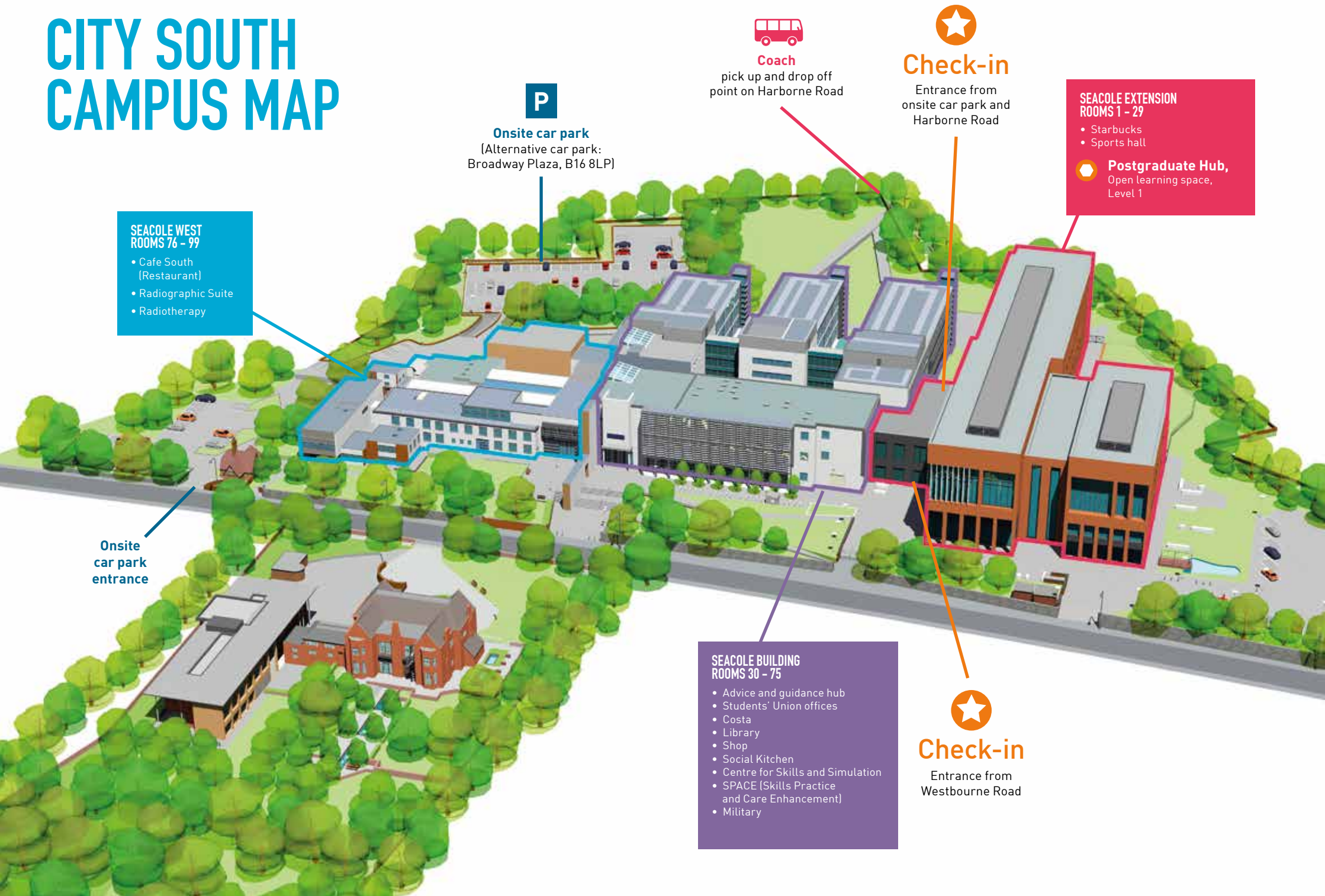
Ask us about: entry requirements, qualifications, offers and decisions and the application process.

### FORUM FOR ACCESSING COMMUNITY EXPERIENCE (FACE)

Meet real health service users, and see how we give you real-life experience through scenarios and simulations to help you understand the treatment they receive.



# CITY SOUTH CAMPUS MAP



**P**

**Onsite car park**  
(Alternative car park:  
Broadway Plaza, B16 8LP)

**SEACOLE WEST  
ROOMS 76 - 99**

- Cafe South (Restaurant)
- Radiographic Suite
- Radiotherapy

**Onsite  
car park  
entrance**



**Coach**

pick up and drop off  
point on Harborne Road



**Check-in**

Entrance from  
onsite car park and  
Harborne Road

**SEACOLE EXTENSION  
ROOMS 1 - 29**

- Starbucks
- Sports hall



**Postgraduate Hub,**  
Open learning space,  
Level 1

**SEACOLE BUILDING  
ROOMS 30 - 75**

- Advice and guidance hub
- Students' Union offices
- Costa
- Library
- Shop
- Social Kitchen
- Centre for Skills and Simulation
- SPACE (Skills Practice and Care Enhancement)
- Military



**Check-in**

Entrance from  
Westbourne Road





**BIRMINGHAM CITY**  
University

**Anything you forgot to ask us?**

**Don't panic!**

**Here is a list of useful contacts:**


Open Day Helpline and Course Enquiries +44 (0)121 331 5595


Admissions +44 (0)121 331 6295


Switchboard (for any other enquiries) +44 (0)121 331 5000


In case of an emergency, call Security: +44 (0) 121 331 6969

[www.bcu.ac.uk/postgraduate](http://www.bcu.ac.uk/postgraduate)

 [birminghamcityuniversity](https://www.facebook.com/birminghamcityuniversity)

 [birminghamcityuni](https://www.youtube.com/birminghamcityuni)

 [@myBCU](https://twitter.com/myBCU)

 [myBCU](https://www.snapchat.com/add/myBCU)

 [myBCU](https://www.instagram.com/myBCU)