

3. You are paying for the course or module yourself

The Application stage

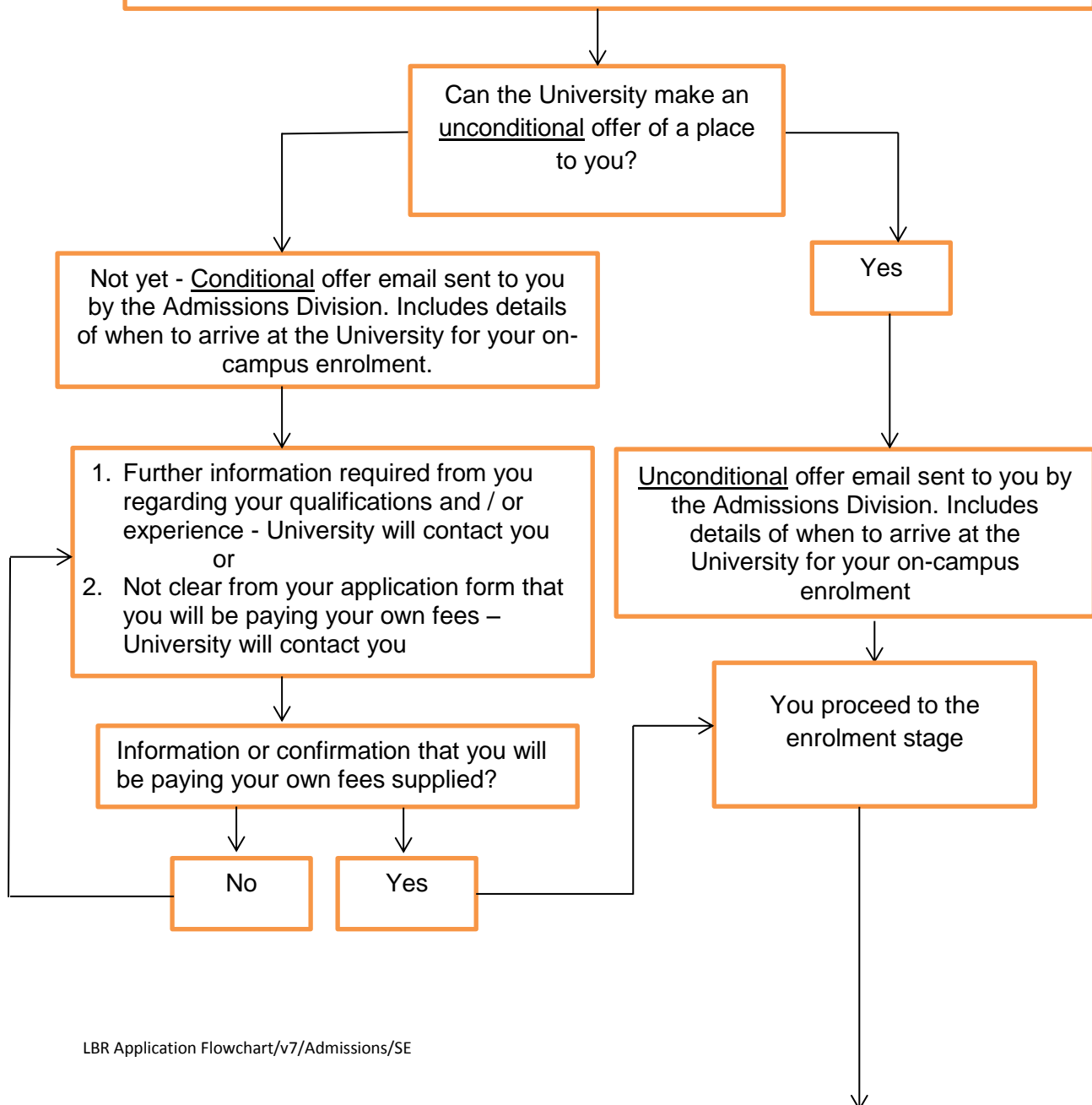
Please complete both the [University application form](#) and [module choice form](#) and submit these to the address below. **Please make it clear on the application form that you will be paying for your own fees.**

Health Admissions
Birmingham City University
Admissions and UKBA Compliance Division
Room E430 4th Floor Edge Building
Perry Barr
Birmingham
B42 2SU

Or via e-mail to:

lbr.health@bcu.ac.uk

Please submit this as early as possible but at least 2 weeks prior to the commencement of your course or module. Please ensure that you include full details of your qualifications and relevant work experience.



The Enrolment Stage

i) On-Line enrolment

You will receive an email from the University asking you to complete your online pre-enrolment.

This will be sent to the email address you provided on your application form

The email will include your personal login details, your new University email address and link to the on-line enrolment form.

You may complete your on-line enrolment form from home.

Please note that you will not be able to complete your on-campus enrolment until your on-line enrolment is completed.

ii) On-campus enrolment

Once you complete your on-line enrolment you can attend the on-campus enrolment session.

When attending please bring with you the following documentation:

1. Confirmation of identification (Passport, Driving licence with a photo etc)
2. All of your qualifications including proof of professional registration (NMC, HCPC etc)