

**Safe Care Conference: 26th June
2014: 1400 session
Collaborative Research: THE
WEST MIDLANDS RESEARCH
DESIGN SERVICE**

Dr George Dowswell

Deputy Director: Birmingham Hub of WMRDS



PLAN FOR SESSION

- Background and purpose of Research Design Service (RDS)
- The services we offer
- How we operate

“applications from the NHS often contain excellent ideas ... which unfortunately cannot be funded because of methodological flaws”

- The National Institute for Health Research (NIHR) Research Design Service was established in October 2008
- To **improve the number and quality of applications** to RfPB and other NIHR funding programmes

AIMS AND PURPOSE OF RDS

- To help researchers **develop and design** high quality research proposals for submission to national, peer-reviewed funding competitions for applied health and social care research
- To **provide consistent national coverage**, with a focus on NHS-based researchers applying to the NIHR RfPB Programme
- To **offer access to a range of expertise in research design** and refer to other sources of expert advice on applied health and social care research

RDS Charter: We will.....

- offer professional advice on developing a grant application, free of charge
- allocate a RDS lead to provide support and guidance provide feedback on draft proposals in a timely manner using face-to-face meetings or other forms of communication as appropriate.
- treat all discussions and the information provided with appropriate confidentiality
- facilitate the identification of a suitable funding stream for your project
- facilitate the identification of suitable collaborators
- give you access to a range of research support materials and signpost to further helpful resources. –
- See more at: <http://www.rds.nihr.ac.uk/about-us/charter/#sthash.szFV65BX.dpuf>

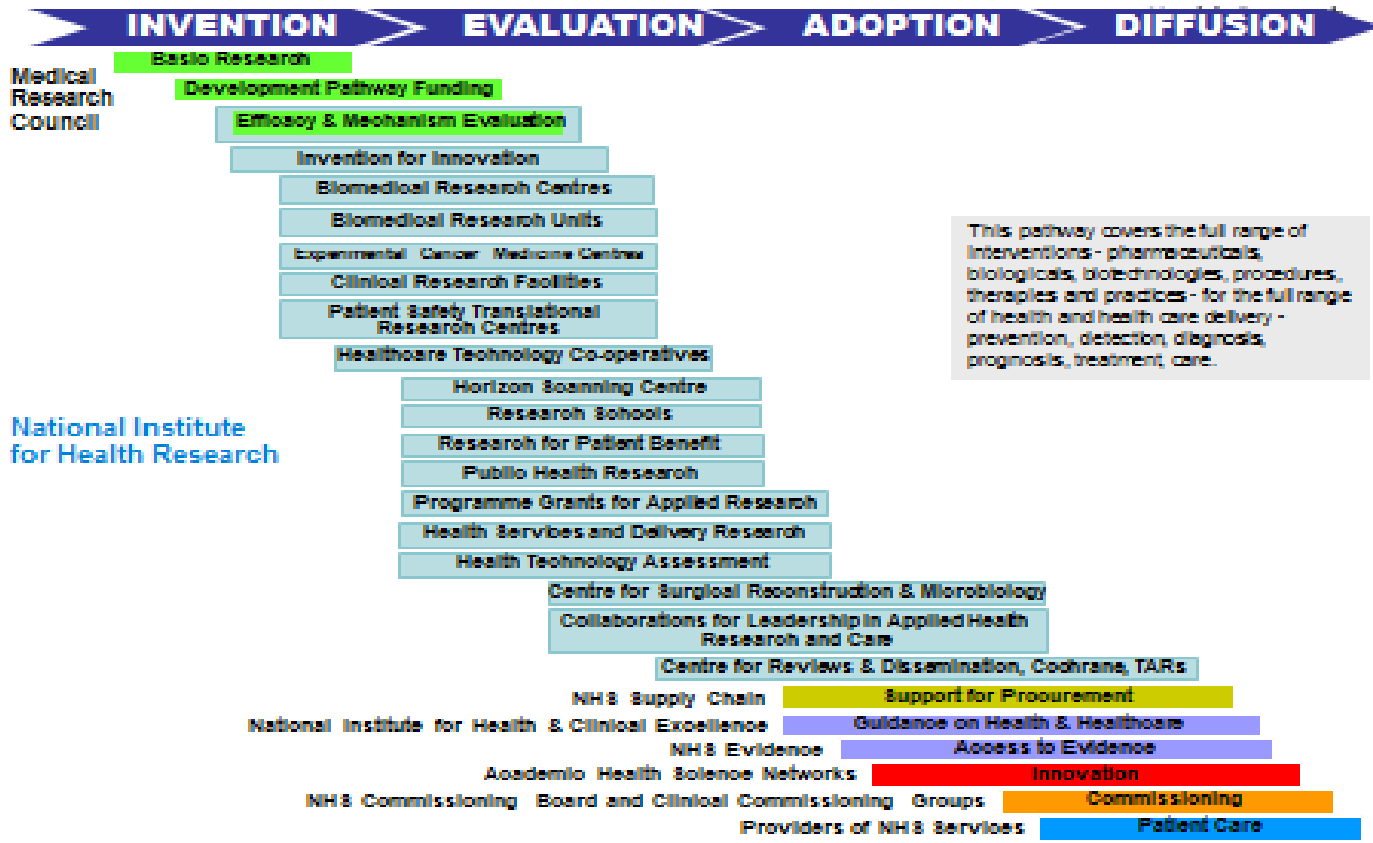
We will not:

- help develop projects where there is no intention of submitting an application for peer review to a recognised funding stream
- support applications that are not applying for funding from national peer-reviewed funding agencies
- provide supervision or informal support for students carry out any of the research (unless we agree to be a co-applicant, where appropriate costs are included in the grant).

We expect that investigators will:

- approach us in a timely manner
- acquaint themselves with the scope and eligibility of the targeted funding stream
- work closely with their research team and will include them in discussions
- consider our advice carefully accurately reflect, in the application, the support that RDS has given.

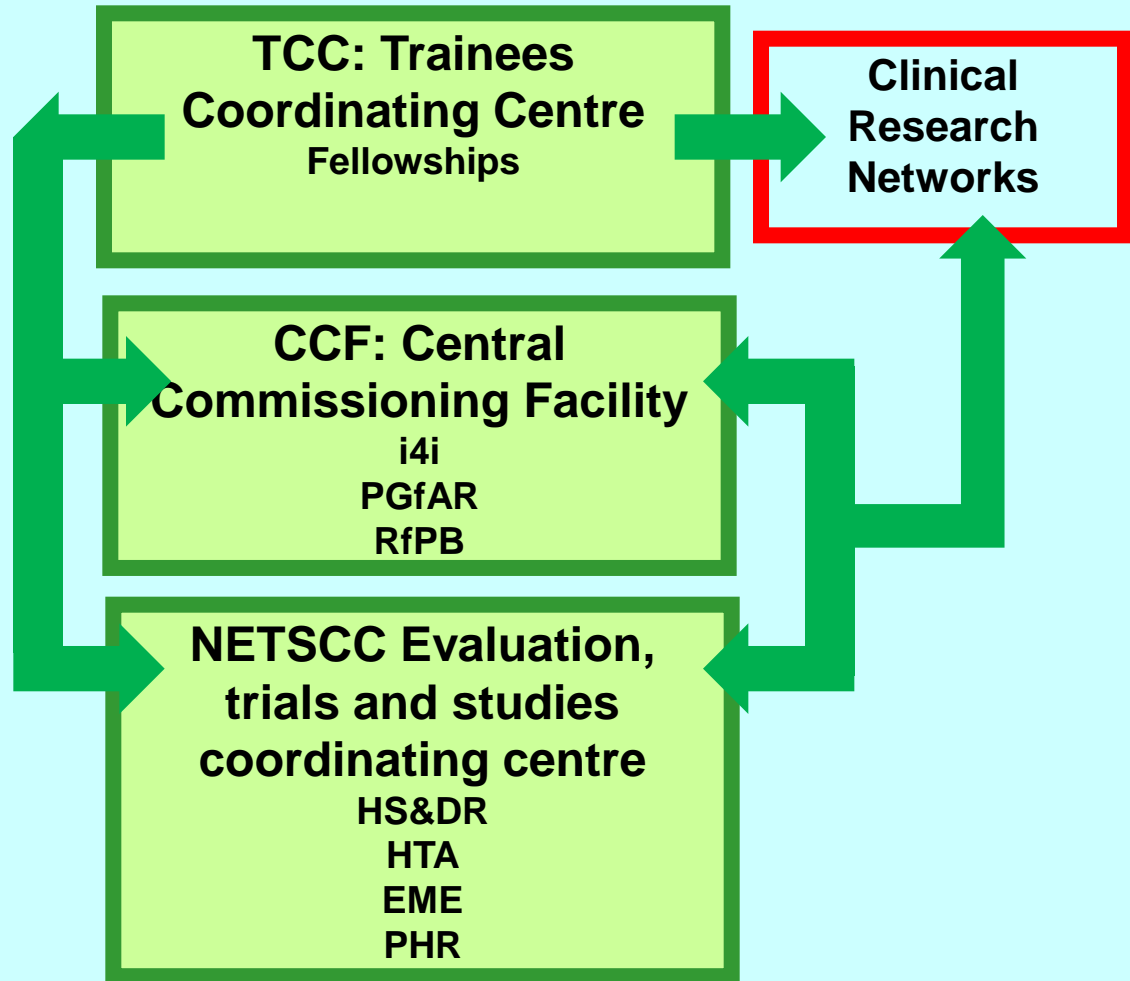
The central role of NIHR research in the innovation pathway



This pathway covers the full range of interventions - pharmaceuticals, biologicals, biotechnologies, procedures, therapies and practices - for the full range of health and health care delivery - prevention, detection, diagnosis, prognosis, treatment, care.

NIHR as a system

- Joint calls
- Facilitating researchers, speeding review
- Transfers between NIHR programmes
- Active collaboration between programmes
- Directors' meetings
- Meeting with networks



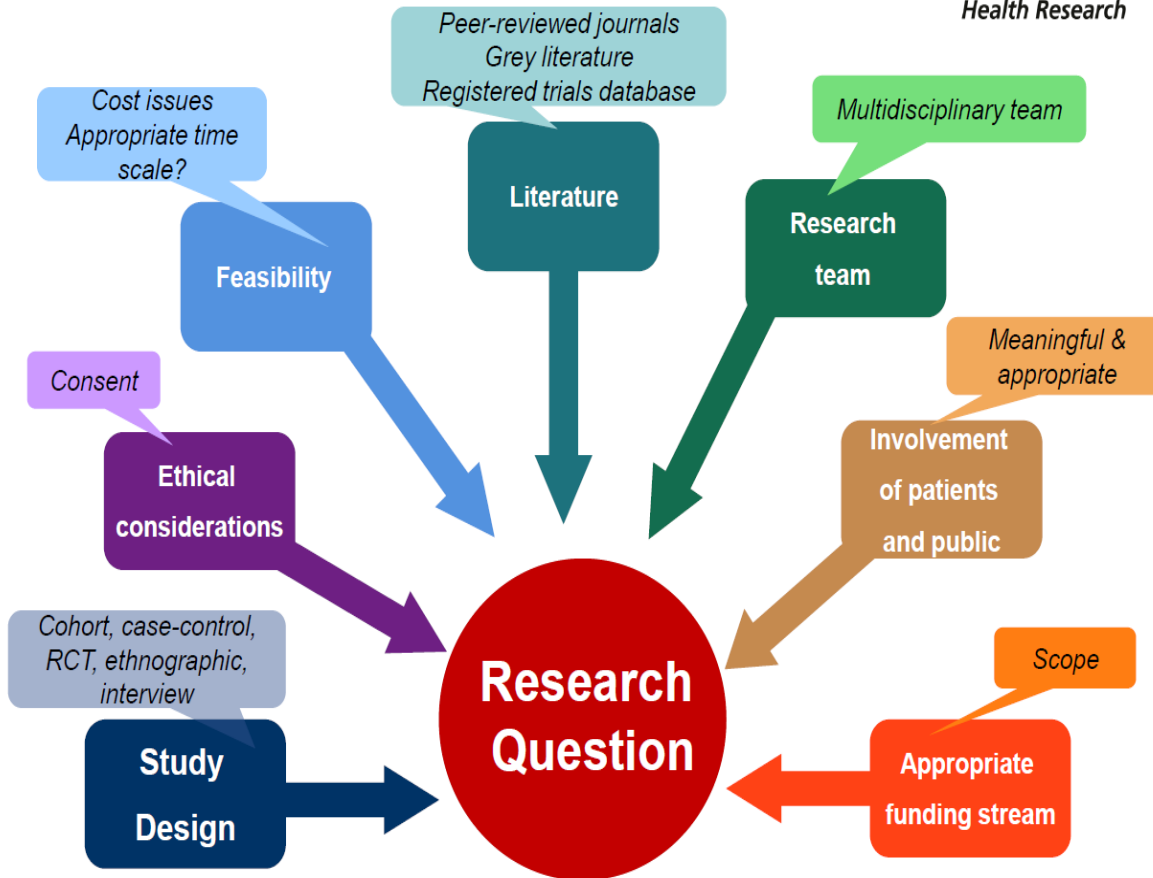
Which programme? Visit the market place



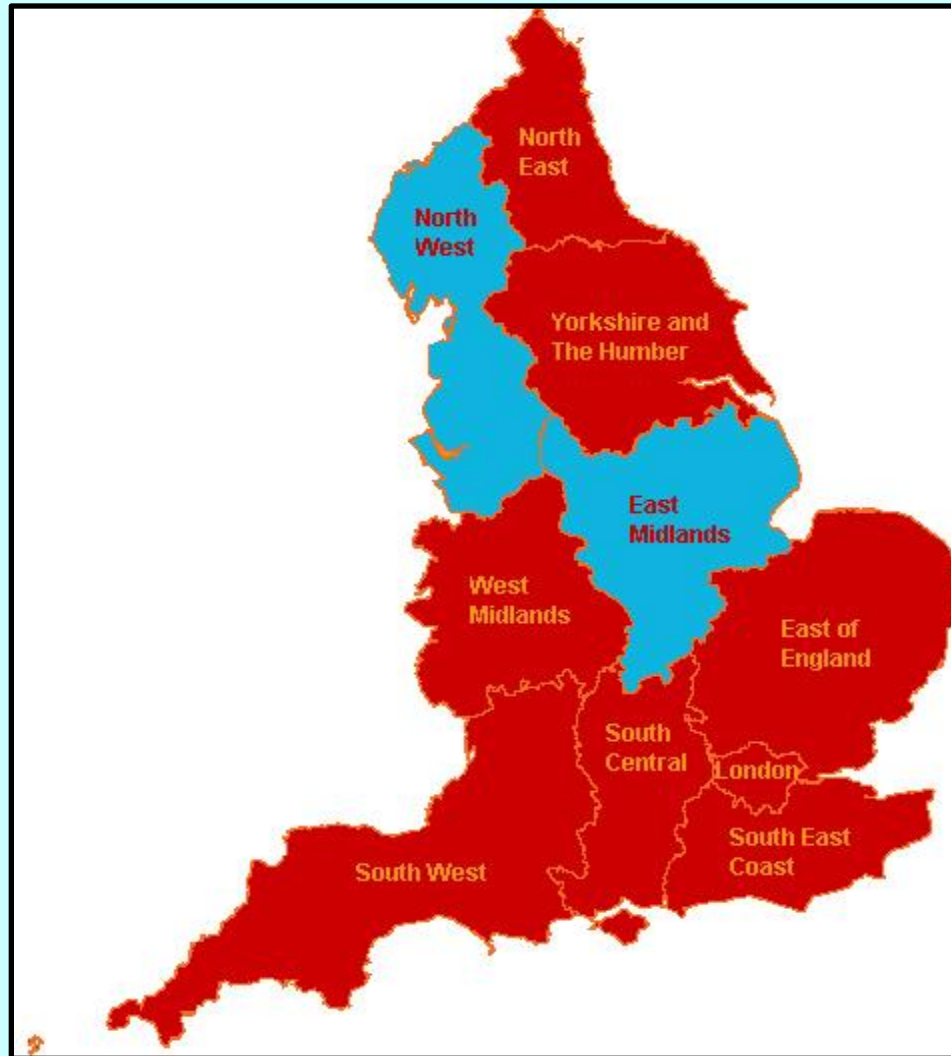
National Institute for
Health Research

- **EME** – exploratory trials, less pragmatic, phase 2-3, efficacy, mechanisms if possible?
- **HTA** – systematic reviews, large multicentre pragmatic trials or other studies (phase 3-4), effectiveness in the NHS
- **HS&DR** – organisational, patient experience, qualitative or other
- **i4i** – translational R&D projects aimed at cultivating new techniques or technologies into innovative interventions to address healthcare needs
- **PHR** - evaluates public health interventions
- **PGfAR** – £2m for up to five years, awards made to NHS bodies
- **RfPB** – max £350k for up to three years, awards made to NHS bodies
- **Fellowships** – doctoral, postdoctoral and senior fellowships

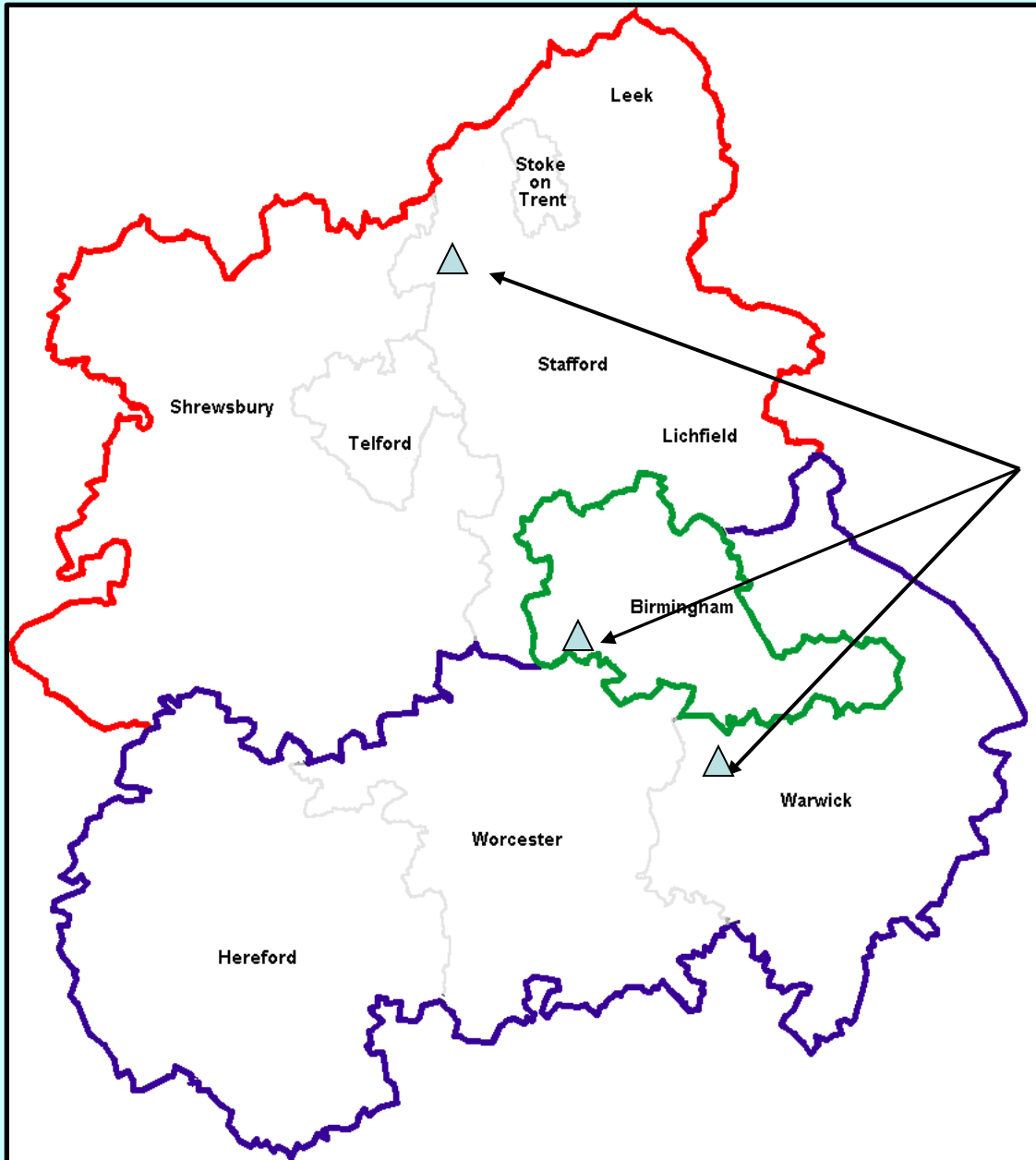
Research ideas to research questions



Ten RDS across England



WEST MIDLANDS RDS



Coordinating Office:

University of Birmingham
(Centre)

Hubs:

University of Birmingham

Keele University

University of Warwick

OUR SERVICE

Advice about study design:

- Statistics (including RCTs)
- Health economics
- Systematic reviews and meta-analysis
- Qualitative, quantitative and mixed-methods
- Service evaluation
- Ethics and Research Governance
- Patient and Public Involvement
- Appropriate formation of Research Team
- Identification of funding streams other than RfPB



Helping researchers at all stages of preparing grant applications

Research Design Service West Midlands provides help on research design to researchers in the West Midlands who are developing proposals for open, national, peer-reviewed funding competitions for applied health or social care research.

NIHR RDS
Research Design Service
@NIHR_RDS

RT @OfficialNIHR: Applications invited for #NIHR Programme Development Grant (Competition 12). Closes on 14 Oct at 1pm. Find out more [http...](#)

10 June
Reply Retweet Favorite

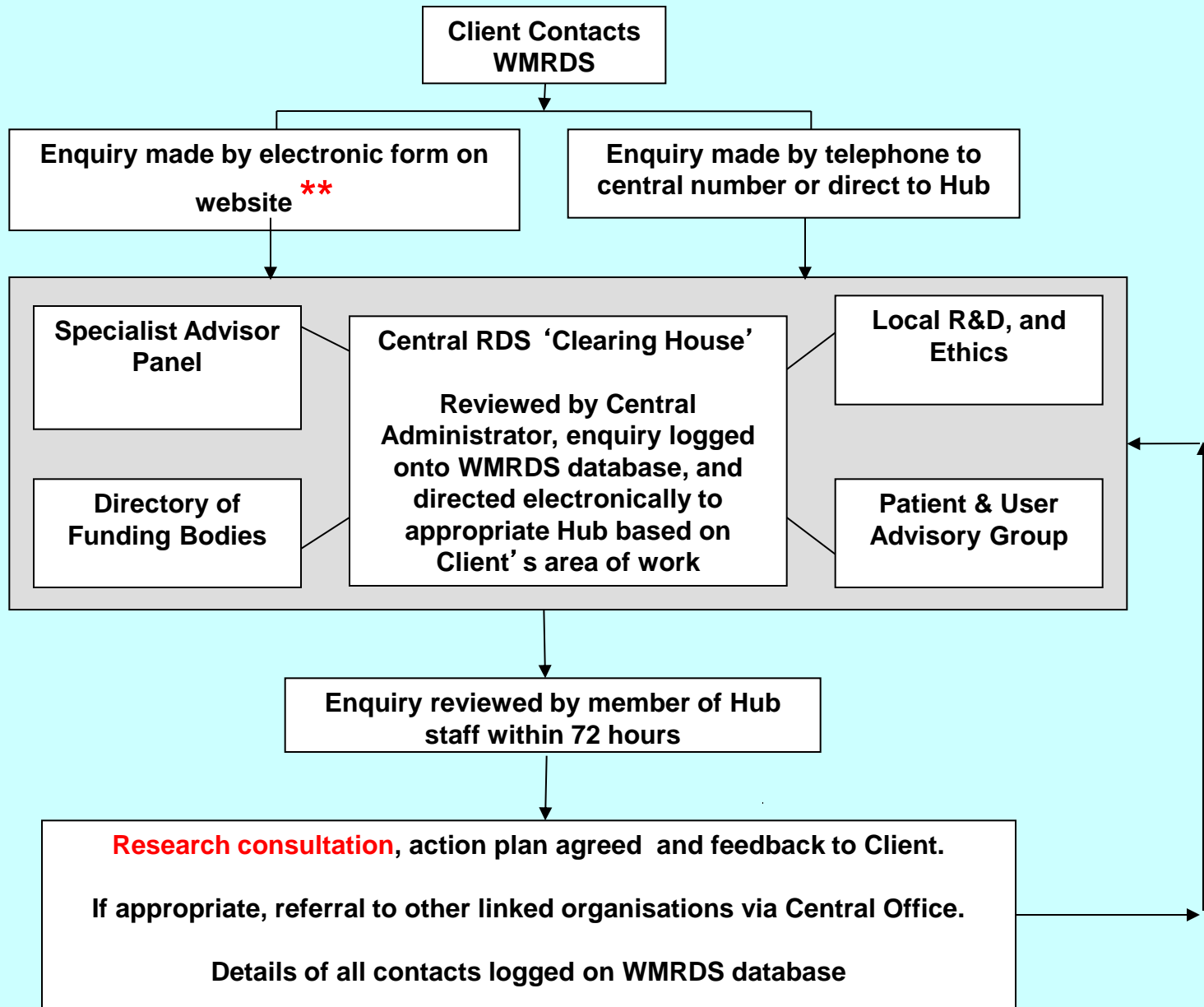
Follow

RDS STAFF

- Staff can give advice on a range of methodological and research design areas

‘Front Line Advisors’ (FLAs)	Methodological Experts
Generic research design advice	Clinical Trials
Statistics	Statistics
Epidemiology	Medical Sociology
Health Economics	Epidemiology
Ethics and Research Governance	Service Evaluation
	Systematic Reviews

OPERATING PROCEDURE



PPI BURSARY SCHEME

- **Up to £500, easy application process**
- **Launched December 2009 to support PPI before research is funded**

REGIONAL METRICS 2010/11

- **New requests for support:**
 - **195 submitted queries.**
- **Submitted proposals:**
 - **15 outline;**
 - **49 full (34 RfPB)**
- **Outcomes of submissions:**
 - **5 outlines short listed (2 rejected)**
 - **17 projects funded (46 rejected)**

WHO SHOULD CONTACT THE RDS?

- An isolated health worker / novice researcher, with a good research question that they want to take further
- A clinical team with some research experience, who need methodological support
- A good team, with limited expertise in some areas, e.g. health economics, statistics
- A strong research team limited in clinical or user areas, who need specific clinical expertise or user engagement
- A full research team, who need research governance/ ethics advice

Funding failures: why?

- Is it the right question –
 - What is the problem?
 - Will it provide the answer?
- Timely
 - Applicable within 5 years?
 - Will it still be wanted in 17 years?
- Original (or already answered)
 - Systematic review?
 - Literature search?
 - Already in progress elsewhere (UKCTG)
 - Is it too original?
 - Is it too narrow?
- Plausible
 - Are effect sizes realistic?
- Risky
 - Will the methods lead to getting the wrong answer or no answer?
 - Is there any evidence that participants can be recruited?
 - Are sufficient numbers available?
 - What is the distance from patient benefit? (> distance, > risk)

CONTACT THE WMRDS

CENTRAL: 0121 414 8533

rdscentre@contacts.bham.ac.uk

BIRMINGHAM: 0121 414 8533

rds@contacts.bham.ac.uk

WEB: <http://www.wm-rds.bham.ac.uk/>

Thank you

Any questions?