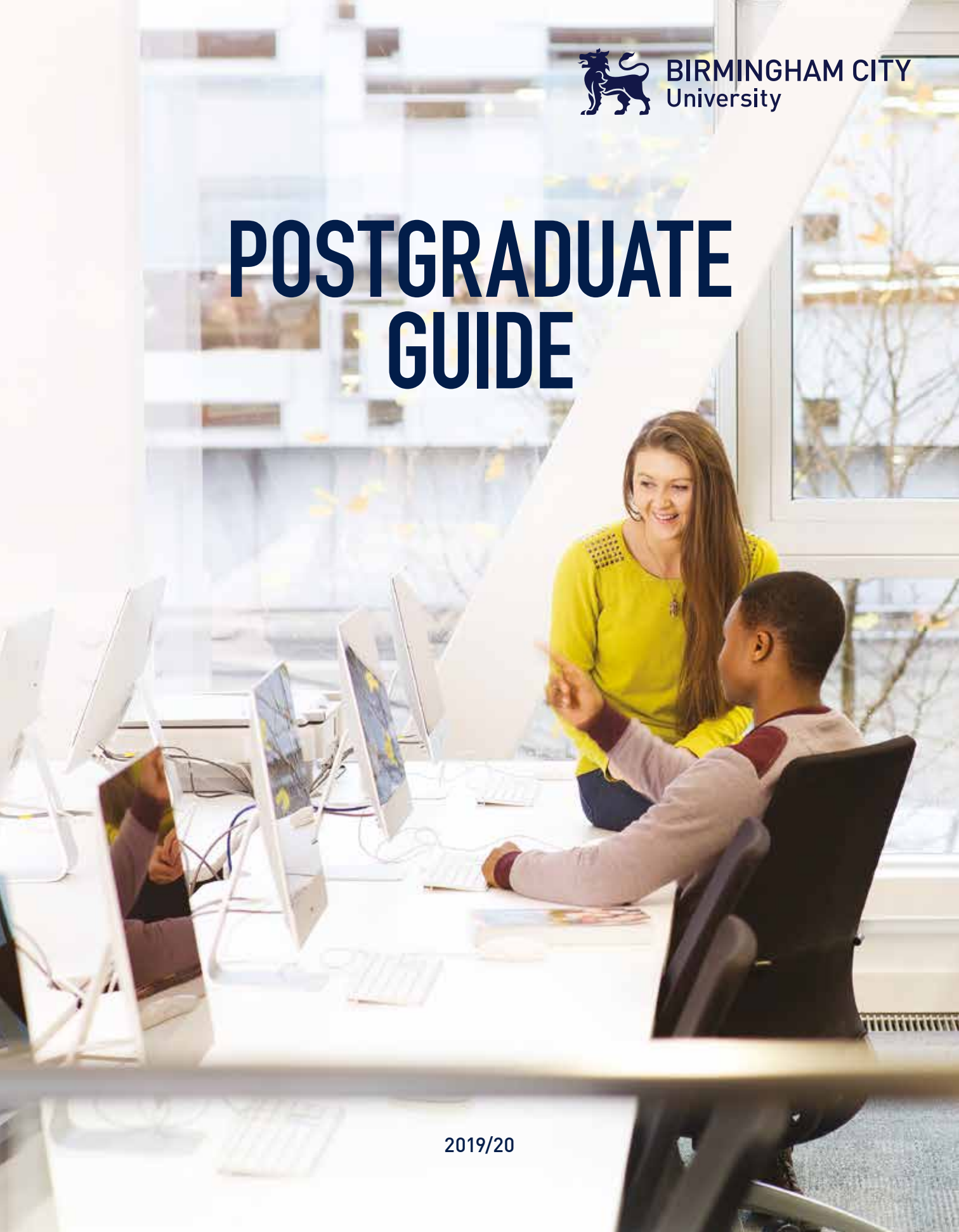




**BIRMINGHAM CITY**  
University

# POSTGRADUATE GUIDE



2019/20

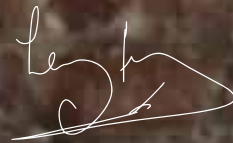
# WELCOME

**I'D LIKE TO GIVE YOU A WARM WELCOME TO BIRMINGHAM CITY UNIVERSITY. I AM IMMENSELY PROUD TO BE THE CHANCELLOR OF THIS VIBRANT AND DIVERSE INSTITUTION.**

Our University offers the sort of education I'd have loved when I was younger – right in the heart of the thriving city of Birmingham, with fantastic facilities that blew me away when I first visited. The teaching staff are incredibly passionate about their subjects and give our talented students the chance to go on and achieve their ambitions.

My advice is to come and see for yourself what's happening at the University and across the city. I did, and that's why I was thrilled to accept this amazing role.

I look forward to working with you, helping you become part of Birmingham City University's next generation of talent.



**Sir Lenny Henry,**  
Chancellor, Birmingham City University

# FIND YOUR FUTURE HERE

WELCOME TO BIRMINGHAM CITY UNIVERSITY AND THANK YOU FOR YOUR INTEREST IN TRANSFORMING YOUR FUTURE PROSPECTS THROUGH POSTGRADUATE STUDY WITH US.



A postgraduate qualification is an opportunity to be introduced to new ideas, to gain expertise in your specialist subject and to give your career a real edge.

Our innovative teaching methods, ground-breaking research and collaborations with industry are backed by around 50 of our courses having professional accreditation – an approach that is constantly broadening the thinking of our staff, students and associates.

By studying here, you will gain the knowledge and attributes that today's employers constantly crave. Through our close relationships with businesses and organisations in Birmingham, you'll gain extensive practical experience and skills. It's no surprise that within six months of graduating, 96% of our postgraduate students have progressed into employment or further study\*.

Since our launch in 1843, the University has developed and evolved to meet the modern world's demands. One factor that has always remained the same,

however, is our determination and focus on providing a state-of-the-art education for our future professionals.

Proudly located in the heart of the exciting and diverse city of Birmingham, we are known nationwide for being a university that embraces individuality, ambition and success.

We hope to welcome you soon, but if you have any queries about postgraduate study in the meantime, please don't hesitate to get in touch with us.

\*Destination of Leavers from High Education survey 2016/17

# WHY STUDY WITH US?

## HERE ARE 10 REASONS TO CHOOSE BIRMINGHAM CITY UNIVERSITY.

### 1 POSTGRADUATE EMPLOYMENT RATES

Our commitment to developing our students with the skills and knowledge they need means that 96% of our postgraduates are in employment or further study within six months.

(Destination of Leavers from Higher Education survey 2016/17)

### 2 A GLOBAL CITY

Study with us and you will be located at the heart of the dynamic city of Birmingham – with all the social and employment possibilities that brings.

### 3 LEARN FROM THE BEST

Our teaching staff come from and maintain links with industry, and ten are National Teaching Fellows – the most prestigious award for excellence in university teaching and learning.

### 4 PRACTICE-BASED RESEARCH

Almost 90% of our research was judged to have delivered, outstanding, or, very considerable, external impact.

(Research Excellence Framework 2014)

### 5 INVESTING IN YOUR FUTURE

We have invested £260 million in industry-standard, state-of-the-art facilities to ensure you have the best possible environment for practice-based learning.

### 6 AMAZING FACILITIES

From four TV and six radio studios to a mock hospital ward and City trading room, we are committed to providing the best resources for our students.

### 7 CHOICE FOR ALL

With over 120 postgraduate and professional development courses to choose from, there's choice to think outside the box and arm yourself with a postgraduate qualification that suits your interests and ambitions.

### 8 SUPPORT AND ADVICE

Throughout your time with us, you'll have access to our full range of student support services including career advice, mentoring and professional development events.

### 9 ENHANCED EARNING POTENTIAL

Someone with a Master's degree or PhD earns £6,000 more per year, or £240,000 over a 40-year working life, than someone with just a degree.

(Graduate Labour Market Statistics 2017, Department for Business, Innovation and Skills)

### 10 FINANCIAL SUPPORT

In 2018, loans of up to £10,609 were available to support with fees and living costs for postgraduate students. This amount grows each year in line with inflation.

# SUCCESS STORIES

TO GET AN AUTHENTIC SENSE OF WHAT STUDYING A POSTGRADUATE DEGREE WITH US IS LIKE, MEET A FEW OF OUR SUCCESSFUL POSTGRADUATE STUDENTS:

“I CHOSE TO DO A POSTGRADUATE DEGREE BECAUSE IT WOULD GIVE ME THE BEST OPPORTUNITIES IN TERMS OF MY FUTURE CAREER PROGRESSION.”

WIL VINCENT



**ALESSANDRO SORRENTINO**  
BA (Hons) Media and Communications 2013  
MA Online Journalism 2016

Alessandro is a data journalism specialist whose work has caught the eye of the BBC, Trinity Mirror and *The Guardian*. After completing both his undergraduate and postgraduate degrees with us, he's now about to start his PhD in Data Journalism here at Birmingham City University.

“My career as a journalist started almost a decade ago, when I was the lead for my school's BBC Schools News Report project. In my five years of leading that project, we created several original programs with the help of the BBC and it was my first taste of journalism.

“When working with the BBC, I reported on a story which involved looking at the number of revenge porn cases that have been reported to UK police forces since the law came into force last April. My story was then published on the BBC News homepage and it received over 500,000 hits during the first week, and was picked up a couple of weeks later by *The Guardian* who featured the story (with their own twist) on their front page. The story led to the police requisitioning a defendant due to public outcry. The story was also picked up by a number of other outlets, both national and local.”

Alessandro is currently working on more data-focused articles with the BBC and wants to continue with this in the future. But for now, he's getting stuck into writing his PhD and hopes he can inspire future Journalism students.



**WIL VINCENT**  
BSc (Hons) Planning and Development 2012  
MSc Environmental and Spatial Planning 2014

Wil made the most of every opportunity at Birmingham City University, progressing from undergraduate to postgraduate study and getting involved with university life through our student employment scheme. He then secured a role as a Student Success Adviser, helping others to make the most of their time here, and is now continuing his involvement at the University by studying a PhD and taking up the role of Assistant Lecturer with Computing, Engineering and the Built Environment.

“I chose to do a postgraduate degree because it would give me the best opportunities in terms of my future career progression, and it was required in terms of my professional body for chartered membership.

“For me, postgraduate study is different in that it's more advanced thinking – I wouldn't necessarily say it's more difficult, it's more that the way you have to approach it in terms of the expectations and the detail of the work you're providing. I would say it's a step not a jump.”

Currently Wil is completing a PhD on the phenomena of 'studentification', which involves understanding the changes in populations caused by university students moving to an area, particularly the growth in student accommodation and the impact on sustainable communities. Wil is now really proud that he gets to give back to the university and inspire the next generation of planners within CEBC.



**LAVANYA LAKSHMINARAYANAN**  
MA Journalism 2017

Lavanya is one of our international students who has just finished studying her Master's in Journalism at BCU. Whilst studying, she also took up a position in our International Office as a Marketing Assistant. With all of that under her belt, we took some time to ask her how she benefitted from being an International Student at BCU:

“I didn't feel like my undergraduate degree gave me a satisfactory level of exposure to the industry. I felt there were still questions in my mind I needed answering, skills I needed to learn and mistakes I needed to make in a safe space before settling into the industry permanently. The Master's was an automatic step at that point.

“Because I chose to study abroad, I picked up more skills than I originally intended to, I have become a lot more confident in myself. At first, understanding and adapting to the currency took some time. Accents were also a little hard to comprehend but nothing prepares you for the sheer diversity of the accents in Britain.”

When asked what tips she would give prospective international students, she insisted “Come prepared with what you want to get out the Master's programme you have chosen to study. Also, check out the businesses and start-ups in the area that are related to your industry, many of them offer internships which is great for your resume.”



**TAMARA ROGERS**  
MA Psychology 2017

Tamara decided to study a Master's with us on an online basis. This gave her the opportunity to work full-time, whilst still studying within the field that she was interested in. We set some time aside and asked Tamara for some top tips for studying online.

“I'd been thinking about returning to study for a while. I did an undergraduate Philosophy degree back in 2003 so was a bit nervous about it at first; however, I'd always been interested in Psychology, and felt like doing the Master's qualification would not only be interesting, but would also potentially broaden my career prospects.

“Studying online can feel a little isolated at times – you have to be disciplined to make sure you're getting enough work done, and you don't have the encouragement of seeing your fellow students at seminars or lectures every week. However we have regular online group tutorials/chats so we can speak to the lecturers, ask questions and share ideas. The staff are always really responsive on email as well, so you're never that far away from someone to bounce a question off!”

When asked what tips she would give prospective online students, she said: “I think you have to try and be organised – plan out your time as much as you can, and plan to give yourself a bit of a break every now and then so you don't burn out. Just enjoy it!”

# OUR RESEARCH

**RESEARCH IS A CORE COMPONENT OF WHAT WE DO AT BIRMINGHAM CITY UNIVERSITY. OUR RESEARCHERS ARE COMMITTED TO DISCOVERING NEW KNOWLEDGE AND DELIVERING REAL BENEFITS TO CULTURE, INDUSTRY, SOCIETY AND THE ENVIRONMENT.**

Postgraduate research students are members of our wider research community of academics and research staff, research collaborators and research users, who work together to create and apply new knowledge and understanding.

Studying for a research degree allows you to explore your chosen topic in greater depth, guided by expert supervisors within a supportive environment. In addition to analytical and research skills, you will develop transferable professional skills which are highly valued by employers, such as time management.



## Research Areas

Our priority areas include:

- Allied Health Professions,
- Nursing and Life Sciences
- Architecture, Built Environment and Planning
- Art and Design
- Business and Management
- Criminology and Social Sciences
- Cyber Security, Computer
- Science and Informatics
- Education
- English
- Engineering
- Law and International Legal Studies
- Media and Cultural Research
- Music, Drama and Performing Arts
- Psychology.

Our academic staff and research students conduct innovative research in these areas that helps to shape and change the world.

To find out more about research degrees, please visit our website at [www.bcu.ac.uk/research](http://www.bcu.ac.uk/research).



# FINANCE

**IT'S IMPORTANT TO BE AWARE OF THE FUNDING AVAILABLE TO YOU WHEN YOU CHOOSE TO DO POSTGRADUATE STUDY, TO ENSURE YOU HAVE ENOUGH MONEY FOR COURSE FEES, STUDY MATERIALS AND LIVING COSTS.**

## Tuition fees

Each course web page includes the tuition fees for that course. Some courses involve intensive laboratory, clinical or fieldwork so may have higher fees.

International students (from outside of the UK/EU) will be charged fees at the international rate. Part-time fees normally do not apply to international students as your student visa requires you to study full-time.

Visit the course pages to find out about tuition fees and costs at [www.bcu.ac.uk/pgcourses](http://www.bcu.ac.uk/pgcourses).

## Funding your postgraduate degree

There are many areas of funding and many different bursaries to apply for, but there is no shortage of competition for them. When it comes to funding, it's important to start early – as soon as you've found a place on a course, funding should be your main priority. Your starting point should be contacting the University, who will be able to tell you about any funding available.

## Postgraduate loans

The UK government offers loans to eligible students starting a taught or research Master's degree. The maximum loan for students who ordinarily live in England or Wales was £10,609 in 2018. This amount grows with inflation each year. A package of support is also available to students who live in Scotland or Northern Ireland, and to eligible students from the EU.

Full details, including eligibility and repayment, can be found at [www.gov.uk/postgraduate-loan](http://www.gov.uk/postgraduate-loan).

## Research funding

The UK government also intends to introduce postgraduate doctoral loans of up to £25,000 for students starting a research degree in the UK. Find out more via [www.gov.uk/doctoral-loan](http://www.gov.uk/doctoral-loan).

Research funding is awarded on a competitive basis, using independent expert peer review. Potential applicants should refer specific questions about the applications process to the relevant Research Council. Discover more at [www.rcuk.ac.uk/funding](http://www.rcuk.ac.uk/funding).

## Professional and Career Development Loan

These are bank loans to help cover your fees and living expenses, and range from £300 to £10,000. Check out [www.gov.uk/career-development-loans](http://www.gov.uk/career-development-loans) for more information.

### **OTHER SOURCES OF FUNDING MAY INCLUDE:**

- PGCE student funding
- Career Development Loans
- Employer support
- Disabled Students Allowance
- Trusts and charities

# FLEXIBLE STUDY OPTIONS



## Flexible study options

Here at Birmingham City University, we understand that sometimes life gets in the way. That's why we offer not only full-time study, but a host of flexible study options including part-time and online.

## Online

By offering you a range of online courses, it means that you can study for your postgraduate degree in your own time. You will learn through tutor-led webinars, online activities and a range of internet resources, including e-library learning sources. Emphasis is placed on student-centred guided, self-directed learning, with a progressively increasing independence of approach, thought and process.

One in five people are studying on a part-time basis.

## Part-time

We offer a range of part-time postgraduate, professional and short courses across many subject areas. So whether you want to enhance your career prospects, update your professional skills or simply study for your own enjoyment, we can help you realise your potential with a range of courses that can fit around your lifestyle.

## Work-life balance

Tailored carefully to the needs of part-time or online students, study options can include evening and day release, yet offer exactly the same levels of student support and facilities. Crucially, part-time study allows you to balance your studies with your life. Flexible study fits in around family and work commitments – and your employer may even contribute towards your tuition fees.

# STEAMHOUSE

FOR THOSE LOOKING TO DO A PHD, STEAMHOUSE IS OUR FANTASTIC NEW CENTRE THAT AIMS TO ENCOURAGE COLLABORATION BETWEEN THE SCIENCE, TECHNOLOGY, ENGINEERING, ARTS AND MATHEMATICS (STEAM) SECTORS.

## What is STEAMhouse?

STEAMhouse has been created in partnership with Eastside Projects and is funded by the European Regional Development Fund and Arts Council England. STEAMhouse will drive innovation and research to create business solutions that fuel long-term economic growth.

## How can STEAMhouse help you?

- Our experimental STEAMlabs workshops focus on product development, collaborative making and societal challenges led by industry talent.
- Access to fabrication facilities support creative SMEs and individuals with the development of new products.
- It will host networking events and learning activities to build a community of projects.
- It will forge new relationships and partnership projects with venues, organisations, artists, festivals and conferences.
- Opportunities for grants of up to £2,500 are available to selected SMEs and sole traders to cover materials for early stage prototyping.
- The first phase of STEAMhouse will be a free and open opportunity for businesses to make use of the facilities.



FIND OUT MORE

[www.steamhouse.org.uk](http://www.steamhouse.org.uk)



Supported using public funding by  
**ARTS COUNCIL ENGLAND**

Eastside Projects



# ARTS, DESIGN AND MEDIA

Our Faculty of Arts, Design and Media includes a specialist music and drama conservatoire, a leading provider of media training, and Europe's biggest jewellery school.

The faculty is internationally renowned for creative education with a history dating back to 1843. It's also England's largest provider of creative courses outside the south-east (HESA 2016/17).

Our links with industry include Rolex, Swatch, Saatchi and Saatchi, Goldsmith, the BBC, The Brits, Axis Design Architects Ltd, Sony Computer Entertainment Europe, SEGA and Rockstar North.



The Shell, Parkside Building

## Acting and Voice

### MA/PgDip Acting

Full-time. September 2019.

[www.bcu.ac.uk/acting-ma](http://www.bcu.ac.uk/acting-ma)

### MA/PgDip Professional Voice Practice

Full-time or part-time. September 2019.

[www.bcu.ac.uk/professional-voice-practice](http://www.bcu.ac.uk/professional-voice-practice)

## Architecture and Design

### PgDip Architectural Practice (RIBA Part 3)

Part-time. September 2019 or February 2019.

[www.bcu.ac.uk/architecture-part3](http://www.bcu.ac.uk/architecture-part3)

### MArch Architecture (RIBA Part 2)

Full-time or part-time. September 2019.

[www.bcu.ac.uk/architecture-march](http://www.bcu.ac.uk/architecture-march)

### MA/PgDip/PgCert Conservation of the Historic Environment

Part-time. September 2019.

[www.bcu.ac.uk/conservation-ma-pgdip](http://www.bcu.ac.uk/conservation-ma-pgdip)

### MA Design and Visualisation

Full-time. September 2019.

[www.bcu.ac.uk/design-visualisation](http://www.bcu.ac.uk/design-visualisation)

### MA Design Management

Full-time, part-time or work based learning. September 2019.

[www.bcu.ac.uk/design-management](http://www.bcu.ac.uk/design-management)

### MA Interior Architecture and Design

Full-time. September 2019.

[www.bcu.ac.uk/interior-design-ma](http://www.bcu.ac.uk/interior-design-ma)

### MA Landscape Architecture

Full-time or part-time. September 2019.

[www.bcu.ac.uk/landscape-arch-ma](http://www.bcu.ac.uk/landscape-arch-ma)

### MA Product and Furniture Design

Full-time. September 2019.

[www.bcu.ac.uk/product-ma](http://www.bcu.ac.uk/product-ma)

## Art

### MA Art and Design: Interdisciplinary Practices

Full-time or part-time. September 2019.

[www.bcu.ac.uk/art-ma](http://www.bcu.ac.uk/art-ma)

### MA Arts and Education Practices

Full-time or part-time. September 2019.

[www.bcu.ac.uk/art-education](http://www.bcu.ac.uk/art-education)

### MA Arts and Project Management

Full-time or part-time. September 2019.

[www.bcu.ac.uk/art-project-mgmt](http://www.bcu.ac.uk/art-project-mgmt)

### MA Contemporary Arts China

Full-time or part-time. September 2019.

[www.bcu.ac.uk/china-ma](http://www.bcu.ac.uk/china-ma)

### MA Fine Art

Full-time or part-time. September 2019.

[www.bcu.ac.uk/fine-art-ma](http://www.bcu.ac.uk/fine-art-ma)

### MA Innovation and Leadership in Museum Practice

Full-time or part-time. September 2019.

[www.bcu.ac.uk/innovation-museum](http://www.bcu.ac.uk/innovation-museum)

## English

### MA Creative Writing

Full-time or part-time. September 2019.

[www.bcu.ac.uk/ma-creative-writing](http://www.bcu.ac.uk/ma-creative-writing)

### MA English Linguistics (Distance Learning)

Continuous dates from January 2020.

Distance Learning.

[www.bcu.ac.uk/english-linguistics-ma](http://www.bcu.ac.uk/english-linguistics-ma)

## Fashion and Textiles

### MA Cosmetics Branding and Promotion

Full-time or part-time. September 2019.

[www.bcu.ac.uk/cosmetics](http://www.bcu.ac.uk/cosmetics)

### MA Fashion Design

Full-time or part-time. September 2019.

[www.bcu.ac.uk/fashion-des-ma](http://www.bcu.ac.uk/fashion-des-ma)

### MA Fashion Management

Full-time. September 2019.

[www.bcu.ac.uk/fashion-management-ma](http://www.bcu.ac.uk/fashion-management-ma)

### MA Fashion Promotion

Full-time or part-time. September 2019.

[www.bcu.ac.uk/fashion-promotion-ma](http://www.bcu.ac.uk/fashion-promotion-ma)

### MA Fashion Styling

Full-time or part-time. September 2019.

[www.bcu.ac.uk/fashion-styling-ma](http://www.bcu.ac.uk/fashion-styling-ma)

### MA Garment Technology

Full-time or part-time. September 2019.

[www.bcu.ac.uk/garment-tech-ma](http://www.bcu.ac.uk/garment-tech-ma)

### MA Luxury Brand Management

Full-time. September 2019.

[www.bcu.ac.uk/luxury-brand-mgmt-ma](http://www.bcu.ac.uk/luxury-brand-mgmt-ma)

### MA Textile and Surface Design

Full-time or part-time. September 2019.

[www.bcu.ac.uk/textile-surface-design-ma](http://www.bcu.ac.uk/textile-surface-design-ma)

## Jewellery and Related Products

### MA Jewellery and Related Products

Full-time. September 2019.

[www.bcu.ac.uk/related-products-ma](http://www.bcu.ac.uk/related-products-ma)

### MA Luxury Jewellery Management

Full-time. September 2019.

[www.bcu.ac.uk/jewellery-management-ma](http://www.bcu.ac.uk/jewellery-management-ma)

## Media and Multimedia Technology

### CIPR Professional Public Relations Certificate

Part-time. November 2019 or January 2019.

[www.bcu.ac.uk/cipr-adv](http://www.bcu.ac.uk/cipr-adv)

### Chartered Institute of Public Relations Professional PR Diploma

Part-time. October 2019.

[www.bcu.ac.uk/cipr-dip](http://www.bcu.ac.uk/cipr-dip)

### MA/PgCert Data Journalism

Full-time (MA) or part-time (PgCert).

September 2019.

[www.bcu.ac.uk/data-journalism](http://www.bcu.ac.uk/data-journalism)

### MA Event, Festival and Exhibition Management

Full-time. September 2019.

[www.bcu.ac.uk/event-exhibition-management](http://www.bcu.ac.uk/event-exhibition-management)

### MA Feature Film Development

Full-time. September 2019.

[www.bcu.ac.uk/feature-film-development](http://www.bcu.ac.uk/feature-film-development)

### MA Film Distribution and Marketing

Full-time. September 2019.

[www.bcu.ac.uk/film-distribution-ma](http://www.bcu.ac.uk/film-distribution-ma)

### MA/MSc Future Media

Full-time. September 2019.

[www.bcu.ac.uk/future-media](http://www.bcu.ac.uk/future-media)

### MA Global Media Management

Full-time. September 2019.

[www.bcu.ac.uk/global-media](http://www.bcu.ac.uk/global-media)

### MA Media and Cultural Studies

Full-time or part-time. September 2019.

[www.bcu.ac.uk/media-cultural-studies-ma](http://www.bcu.ac.uk/media-cultural-studies-ma)

### MA Media Production

Full-time. September 2019.

[www.bcu.ac.uk/media-production](http://www.bcu.ac.uk/media-production)

### MA Multiplatform and Mobile Journalism

Full-time. September 2019.

[www.bcu.ac.uk/multiplatform-journalism](http://www.bcu.ac.uk/multiplatform-journalism)

### MA Public Relations

Full-time. September 2019.

[www.bcu.ac.uk/public-relations](http://www.bcu.ac.uk/public-relations)

### MA/MSc Video Game Development

Full-time. September 2019.

[www.bcu.ac.uk/video-game-dev-ma-msc](http://www.bcu.ac.uk/video-game-dev-ma-msc)

### MSc Video Game Enterprise, Production and Design

Full-time. September 2019.

[www.bcu.ac.uk/video-game-enterprise-msc](http://www.bcu.ac.uk/video-game-enterprise-msc)

## Music

### MMus/PgDip/PgCert Composition

Full-time or part-time. September 2019.

[www.bcu.ac.uk/composition](http://www.bcu.ac.uk/composition)

### MMus/PgDip Conducting (Choral)

Full-time or part-time. September 2019.

[www.bcu.ac.uk/choral-conducting](http://www.bcu.ac.uk/choral-conducting)

### MMus/PgDip Conducting (Orchestral)

Full-time or part-time. September 2019.

[www.bcu.ac.uk/orchestral-conducting](http://www.bcu.ac.uk/orchestral-conducting)

### MMus/PgCert/PgDip Experimental Performance

Full-time or part-time. September 2019.

[www.bcu.ac.uk/experimental-performance](http://www.bcu.ac.uk/experimental-performance)

### MMus/PgDip/PgCert Instrumental Performance

Full-time or part-time. September 2019.

[www.bcu.ac.uk/instrumental-performance](http://www.bcu.ac.uk/instrumental-performance)

### MMus/PgCert/PgDip Jazz

Full-time or part-time. September 2019.

[www.bcu.ac.uk/jazz-mmus-pgdip](http://www.bcu.ac.uk/jazz-mmus-pgdip)

### MMus/PgCert/PgDip Music Technology

Full-time or part-time. September 2019.

[www.bcu.ac.uk/music-tech-mmus](http://www.bcu.ac.uk/music-tech-mmus)

### MA Musicology

Full-time or part-time. September 2019.

[www.bcu.ac.uk/musicology](http://www.bcu.ac.uk/musicology)

### Mmus/PgDip Orchestral Performance

Full-time or part-time. September 2019.

[www.bcu.ac.uk/orchestral-performance](http://www.bcu.ac.uk/orchestral-performance)

### MMus/PgDip/PgCert Vocal Performance

Full-time or part-time. September 2019.

[www.bcu.ac.uk/vocal-performance](http://www.bcu.ac.uk/vocal-performance)

### AdvPgDip Professional Performance

Full-time or part-time. September 2019.

[www.bcu.ac.uk/prof-performance](http://www.bcu.ac.uk/prof-performance)

## Visual Communication

### MA Visual Communication

Full-time. September 2019.

[www.bcu.ac.uk/viscom-ma](http://www.bcu.ac.uk/viscom-ma)



# BUSINESS, LAW AND SOCIAL SCIENCES

**The Faculty of Business, Law and Social Sciences is a globally aligned faculty, drawing on theories and practice from around the world to inform our learning environment.**

Birmingham City Business School is a professionally oriented, international business school focused on connecting you with every aspect of the world of business and innovation. While we have a unique relationship with the extraordinary city we're rooted in, renowned for its industry and commerce, our courses are designed to meet the needs of businesses across the globe.

Birmingham City School of Law has been at the forefront of innovative law teaching for more than 40 years, specialising in social justice and access to justice, with leading academics who are experts in human rights and the death penalty, as well as civil and social issues.

At Birmingham City School of Social Sciences, our mission is to make sense of the world. Our students and academics work together across the disciplines of Criminology, Psychology and Sociology to develop insights into society.



## Accountancy and Finance

### **ACCA**

Full-time or part-time.  
August 2019 or January 2020.  
[www.bcu.ac.uk/acca-course](http://www.bcu.ac.uk/acca-course)

### **MSc Accounting and Finance**

Full-time. September 2019.  
[www.bcu.ac.uk/accounting-finance-msc](http://www.bcu.ac.uk/accounting-finance-msc)

### **MSc Accounting and Finance (Master's stage)**

Full-time. September 2019.  
[www.bcu.ac.uk/accountancy-finance-msc](http://www.bcu.ac.uk/accountancy-finance-msc)

### **MSc Accounting and Financial Management**

Full-time. September 2019.  
[www.bcu.ac.uk/accounting-financial-mgmt](http://www.bcu.ac.uk/accounting-financial-mgmt)

### **MSc Finance and Investment**

Full-time. September 2019.  
[www.bcu.ac.uk/finance-investment-msc](http://www.bcu.ac.uk/finance-investment-msc)

## Business and Management

### **MBA Executive Master of Business Administration**

Part-time. September 2019.  
[www.bcu.ac.uk/exec-mba](http://www.bcu.ac.uk/exec-mba)

### **MSc Insurance and Risk Management**

Distance Learning. Online. September 2019.  
[www.bcu.ac.uk/insurance-msc](http://www.bcu.ac.uk/insurance-msc)

### **MSc Internal Audit Management and Consultancy**

Full-time, part-time or distance learning.  
October 2019.  
[www.bcu.ac.uk/internal-audit-msc](http://www.bcu.ac.uk/internal-audit-msc)

### **MBA International MBA**

Full-time or part-time. September 2019.  
[www.bcu.ac.uk/international-mba](http://www.bcu.ac.uk/international-mba)

### **MA/PgDip International Human Resource Management/Development**

Full-time or part-time. September 2019.  
[www.bcu.ac.uk/imba](http://www.bcu.ac.uk/imba)

### **MSc Management and Entrepreneurship**

Full-time. September 2019.  
[www.bcu.ac.uk/entrepreneurship-msc](http://www.bcu.ac.uk/entrepreneurship-msc)

### **MSc Management and Finance.**

Full-time. September 2019 or January 2020.  
[www.bcu.ac.uk/management-finance-msc](http://www.bcu.ac.uk/management-finance-msc)

### **MSc Management and International Business**

Full-time. September 2019 or January 2020.  
[www.bcu.ac.uk/international-business-msc](http://www.bcu.ac.uk/international-business-msc)

### **MSc Management and Marketing**

Full-time. September 2019.  
[www.bcu.ac.uk/management-marketing-msc](http://www.bcu.ac.uk/management-marketing-msc)

### **MBA Master of Business Administration**

Distance Learning. Online. September 2019.  
[www.bcu.ac.uk/online-mba](http://www.bcu.ac.uk/online-mba)

### **MSc/PgDip Multi-Unit Leadership and Strategy**

Part-time. September 2019.  
[www.bcu.ac.uk/multi-unit-pgdip](http://www.bcu.ac.uk/multi-unit-pgdip)

### **MSc Organisational Risk Management**

Distance Learning. September 2019.  
[www.bcu.ac.uk/risk-management-msc](http://www.bcu.ac.uk/risk-management-msc)

## Law

### **LLM International Business Law**

Full-time. September 2019 or January 2020.  
[www.bcu.ac.uk/international-business-llm](http://www.bcu.ac.uk/international-business-llm)

### **LLM International Human Rights**

Full-time. September 2019 or January 2020.  
[www.bcu.ac.uk/human-rights-llm](http://www.bcu.ac.uk/human-rights-llm)

### **LLM International Law**

Full-time. September 2019 or January 2020.  
[www.bcu.ac.uk/international-law-llm](http://www.bcu.ac.uk/international-law-llm)

### **[LPC] Legal Practice Course**

Full-time or part-time. September 2019.  
[www.bcu.ac.uk/legal-practice-llm](http://www.bcu.ac.uk/legal-practice-llm)

### **LLM Legal Practice**

Full-time or part-time. September 2019.  
[www.bcu.ac.uk/legal-practice-llm](http://www.bcu.ac.uk/legal-practice-llm)

### **LLM/PGDL/CPE LLM Professional Law**

Full-time or part-time. September 2019.  
[www.bcu.ac.uk/professional-law-llm](http://www.bcu.ac.uk/professional-law-llm)

### **PGDL/CPE Postgraduate Diploma in Law**

Full-time or part-time. September 2019.  
[www.bcu.ac.uk/diploma-law](http://www.bcu.ac.uk/diploma-law)

## Social Sciences

### **MA Criminology**

Full-time or part-time. September 2019.  
[www.bcu.ac.uk/criminology-ma](http://www.bcu.ac.uk/criminology-ma)

### **MSc Forensic Psychology**

Full-time or part-time. September 2019.  
[www.bcu.ac.uk/forensic-psychology](http://www.bcu.ac.uk/forensic-psychology)

### **MSc Health Psychology**

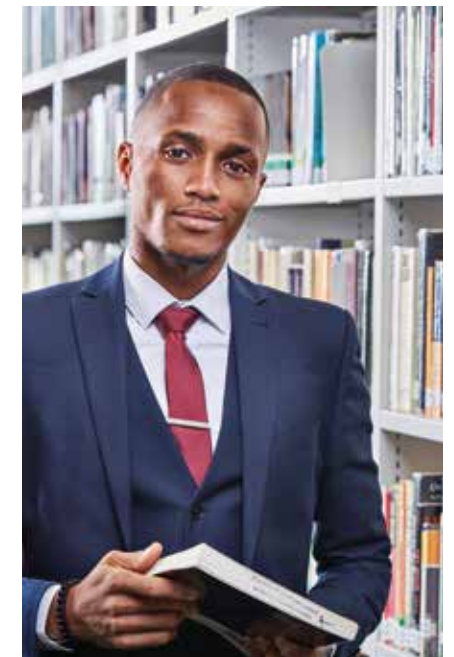
Full-time or part-time. September 2019.  
[www.bcu.ac.uk/health-psychology](http://www.bcu.ac.uk/health-psychology)

### **MSc Psychology**

Distance Learning. September 2019.  
[www.bcu.ac.uk/psychology-msc](http://www.bcu.ac.uk/psychology-msc)

### **MA Security Studies**

Full-time or part-time. September 2019.  
[www.bcu.ac.uk/security-ma](http://www.bcu.ac.uk/security-ma)



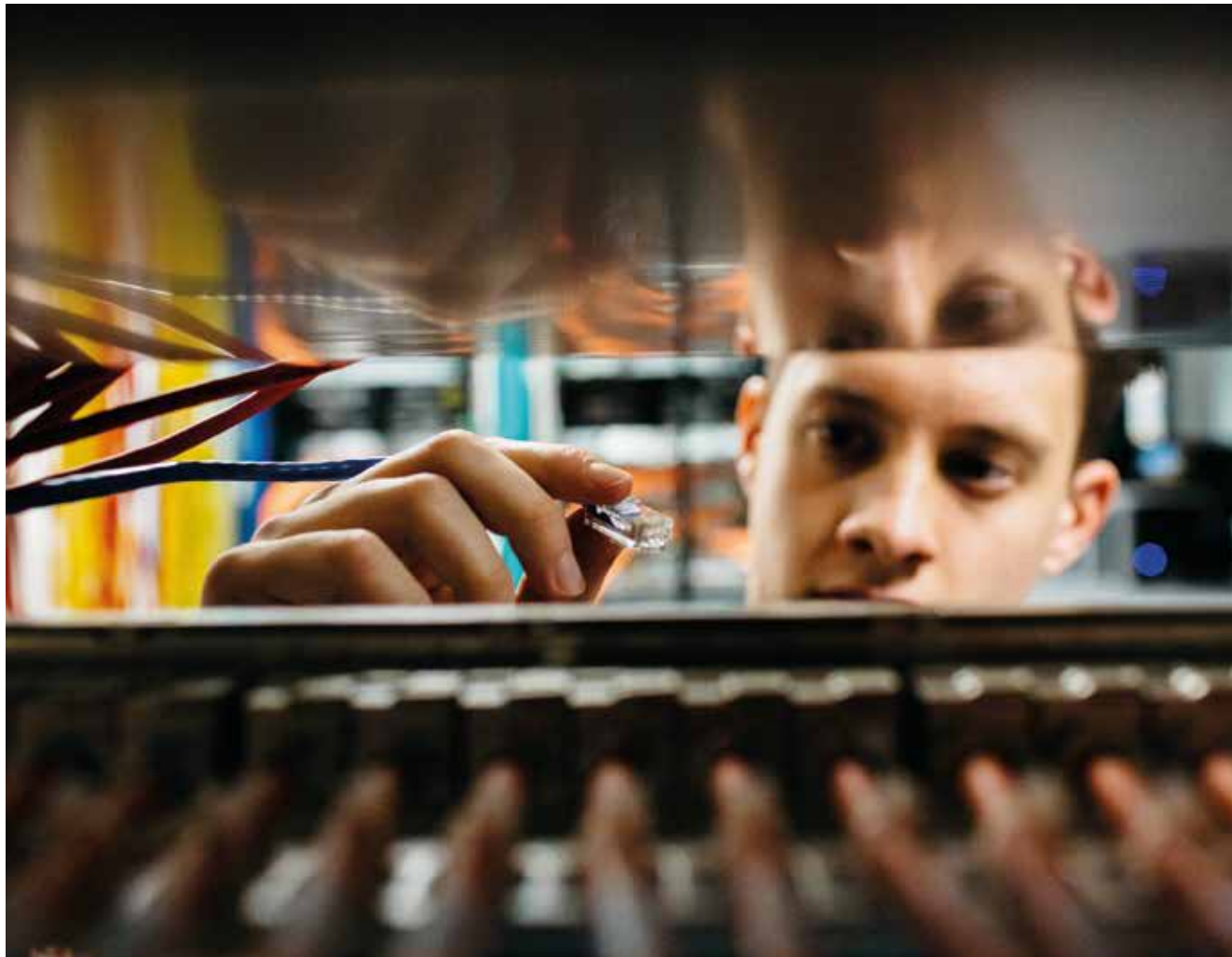
# COMPUTING, ENGINEERING AND THE BUILT ENVIRONMENT

The Faculty of Computing, Engineering and the Built Environment comprises two schools with a shared vision to create a powerful centre of technological excellence and innovation, and to equip you with the skills you need to succeed in the workplace and contribute to the wider society.

We have excellent resources including state-of-the-art laboratories and engineering workshops, world-class film and television studios, and the latest computing and digital

technologies, all located in a spectacular environment provided by the Millennium Point building.

Our courses are designed to develop highly employable graduates and we have worked closely with our strong employer network to ensure our courses meet their demands and expectations. We work with some of the world's foremost employers, including the BBC, Microsoft, Cisco, Jaguar Land Rover and Wilmott Dixon.



## Built Environment

### **MSc Building Surveying with Facilities Management**

Full-time or part-time.  
September 2019 or January 2020.  
[www.bcu.ac.uk/surveying](http://www.bcu.ac.uk/surveying)

### **MSc Construction Project Management**

Full-time or part-time.  
September 2019 or January 2020.  
[www.bcu.ac.uk/construction-pm](http://www.bcu.ac.uk/construction-pm)

### **MSc Environmental Surveying**

Full-time or part-time. September 2019.  
[www.bcu.ac.uk/environmental](http://www.bcu.ac.uk/environmental)

### **MA Planning Built Environments**

Full-time or part-time. September 2019.  
[www.bcu.ac.uk/planning-ma](http://www.bcu.ac.uk/planning-ma)

### **MSc Quantity Surveying**

Full-time or part-time.  
September 2019 or January 2020.  
[www.bcu.ac.uk/quantity-surveying-msc](http://www.bcu.ac.uk/quantity-surveying-msc)

### **MSc Real Estate Management**

Full-time or part-time. September 2019.  
[www.bcu.ac.uk/real-estate-msc](http://www.bcu.ac.uk/real-estate-msc)

## Computing

### **MSc Advanced Computer Science**

Full-time or part-time.  
September 2019 or January 2020.  
[www.bcu.ac.uk/computer-science-msc](http://www.bcu.ac.uk/computer-science-msc)

### **MSc Big Data Analytics**

Full time or part time. September 2019.  
[www.bcu.ac.uk/big-data-msc](http://www.bcu.ac.uk/big-data-msc)

### **MSc Cyber Security**

Full-time or part-time. September 2019.  
[www.bcu.ac.uk/cyber-security-msc](http://www.bcu.ac.uk/cyber-security-msc)

### **MSc Data Networks and Security**

Full-time or part-time. September 2019.  
[www.bcu.ac.uk/data-security-msc](http://www.bcu.ac.uk/data-security-msc)

### **MSc Enterprise Systems Management**

Full-time or part-time.  
September 2019 or January 2020.  
[www.bcu.ac.uk/enterprise-systems-msc](http://www.bcu.ac.uk/enterprise-systems-msc)

## Digital Technology

### **MSc Broadcast Engineering**

Full-time or part-time. September 2019.  
[www.bcu.ac.uk/broadcast-eng](http://www.bcu.ac.uk/broadcast-eng)

## Engineering

### **MSc Automotive Engineering**

Full-time or part-time.  
September 2019 or January 2020.  
[www.bcu.ac.uk/auto-engineering](http://www.bcu.ac.uk/auto-engineering)

### **MSc International Logistics and Supply Chain Management**

Distance learning. September 2019 or January 2020.  
[www.bcu.ac.uk/supply-chain-msc](http://www.bcu.ac.uk/supply-chain-msc)

### **MSc International Project Management Distance Learning**

Online. September 2019 or January 2020.  
[www.bcu.ac.uk/int-project-management-msc](http://www.bcu.ac.uk/int-project-management-msc)

### **MSc Logistics and Supply Chain Management**

Full-time or part-time.  
September 2019 or January 2020.  
[www.bcu.ac.uk/supply-chain-msc](http://www.bcu.ac.uk/supply-chain-msc)

### **MSc Mechanical Engineering**

Full-time or part-time.  
September 2019 or January 2020.  
[www.bcu.ac.uk/mechanical-engineering](http://www.bcu.ac.uk/mechanical-engineering)

### **MSc Project Management**

Full-time or part-time.  
September 2019 or January 2020.  
[www.bcu.ac.uk/project-management-msc](http://www.bcu.ac.uk/project-management-msc)



# HEALTH, EDUCATION AND LIFE SCIENCES

The Faculty of Health, Education and Life Sciences has a long and established history of delivering training for the education and healthcare professions. The quality of our training is reflected in our enviable employability rates with 97.5% of postgraduates in the School of Education and Social Work and 100% of postgraduates from the School of Nursing and Midwifery in work or further study within six months of graduation\*

The School of Health Sciences was established in 2014 to accommodate our growing portfolio of Biomedical Science and Sport courses. The school aspires to be one of the largest and most diverse providers of public health education in the country.

Through our history of working with overseas ministries, academic institutions and professional bodies, we've supported transformation in local healthcare and education practices. We are currently engaged in collaborative research and delivery in a variety of areas including student progression, and mobility of staff and students.

*\*Destination of Leavers from Higher Education Survey 2016/17*



## Education and Teacher Training

### MA Education

Full-time. September 2019.

[www.bcu.ac.uk/education-pg-ma](http://www.bcu.ac.uk/education-pg-ma)

### MA Education (Childhood Studies)

Full-time or part-time. September 2019.

[www.bcu.ac.uk/education-childhood-studies-ma](http://www.bcu.ac.uk/education-childhood-studies-ma)

### MA Education (Early Years Leadership)

Full-time or part-time. September 2019.

[www.bcu.ac.uk/early-years-leadership-ma](http://www.bcu.ac.uk/early-years-leadership-ma)

### MA Education (International Education)

Full-time or part-time.

September 2019 or February 2020.

[www.bcu.ac.uk/international-education](http://www.bcu.ac.uk/international-education)

### MA Education (Special Needs Education)

Full-time. September 2019.

[www.bcu.ac.uk/special-needs-ma](http://www.bcu.ac.uk/special-needs-ma)

### PgDip/MTL/MEL Master's in Teaching and Learning/Educational Leadership

Part-time. September 2019.

[www.bcu.ac.uk/masters-in-teaching-and-learning](http://www.bcu.ac.uk/masters-in-teaching-and-learning)

### PGCE Post-Compulsory Education and Training

Full-time. September 2019.

[www.bcu.ac.uk/pcet](http://www.bcu.ac.uk/pcet)

### PGCE Primary and Early Years Education

Full-time. September 2019.

[www.bcu.ac.uk/pgce-primary](http://www.bcu.ac.uk/pgce-primary)

### PGCE Primary Education with Specialism in Mathematics with QTS

Full-time. September 2019.

[www.bcu.ac.uk/pgce-primary-maths](http://www.bcu.ac.uk/pgce-primary-maths)

### PGCE Primary Education with Specialism in SEN with QTS

Full-time. September 2019.

[www.bcu.ac.uk/pgce-primary-sen](http://www.bcu.ac.uk/pgce-primary-sen)

### PGCE Secondary Art and Design

Full-time. September 2019.

[www.bcu.ac.uk/pgce-art-and-design](http://www.bcu.ac.uk/pgce-art-and-design)

### PGCE Secondary Computer Science and IT

Full-time. September 2019.

[www.bcu.ac.uk/pgce-computer-science](http://www.bcu.ac.uk/pgce-computer-science)

## PGCE Secondary Design and Technology: Food, Textiles and Product Design

Full-time. September 2019.

[www.bcu.ac.uk/pgce-dt](http://www.bcu.ac.uk/pgce-dt)

## PGCE Secondary Drama

Full-time. September 2019.

[www.bcu.ac.uk/pgce-drama](http://www.bcu.ac.uk/pgce-drama)

## PGCE Secondary English

Full-time. September 2019.

[www.bcu.ac.uk/pgce-english](http://www.bcu.ac.uk/pgce-english)

## PGCE Secondary Geography

Full-time. September 2019.

[www.bcu.ac.uk/pgce-geography](http://www.bcu.ac.uk/pgce-geography)

## PGCE Secondary Mathematics

Full-time. September 2019.

[www.bcu.ac.uk/pgce-maths](http://www.bcu.ac.uk/pgce-maths)

## PGCE Secondary Music

Full-time. September 2019.

[www.bcu.ac.uk/pgce-music](http://www.bcu.ac.uk/pgce-music)

## PGCE Secondary Religious Education

Full-time. September 2019.

[www.bcu.ac.uk/pgce-re](http://www.bcu.ac.uk/pgce-re)

## PGCE Secondary Science: Biology

Full-time. September 2019.

[www.bcu.ac.uk/pgce-biology](http://www.bcu.ac.uk/pgce-biology)

## PGCE Secondary Science: Chemistry

Full-time. September 2019.

[www.bcu.ac.uk/pgce-chemistry](http://www.bcu.ac.uk/pgce-chemistry)

## PGCE Secondary Science: Physics

Full-time. September 2019.

[www.bcu.ac.uk/pgce-physics](http://www.bcu.ac.uk/pgce-physics)

## Health

### Health

### MSc/PgCert/PgDip Advanced Clinical Practice

Full-time or part-time. September 2019.

[www.bcu.ac.uk/adv-clinical-practice](http://www.bcu.ac.uk/adv-clinical-practice)

### PgDip Community Health Nursing Specialist Practitioner

Full-time or part-time. September 2019.

[www.bcu.ac.uk/community-health-nursing-spp](http://www.bcu.ac.uk/community-health-nursing-spp)

### ADVProfDip/Gradcert Clinical Hypnosis and Related Techniques

Part-time. September 2019.

[www.bcu.ac.uk/hypnosis](http://www.bcu.ac.uk/hypnosis)

## MSc (pre-registration) Speech and Language Therapy

Full-time. September 2019.

TBC

## MSc Diabetes Care

Full-time or part-time. September 2019.

[www.bcu.ac.uk/pg-diabetes](http://www.bcu.ac.uk/pg-diabetes)

## MSc Dietetics (pre-registration)

Full-time. January 2019.

[www.bcu.ac.uk/dietetics-msc](http://www.bcu.ac.uk/dietetics-msc)

## MBA Healthcare Management

Distance Learning.

May 2019, September 2019, January 2020, May 2020.

[www.bcu.ac.uk/mba-online-health](http://www.bcu.ac.uk/mba-online-health)

## Module / MSc / PgCert / PgDip Medical Ultrasound

Part-time. September 2019.

[www.bcu.ac.uk/medical-ultrasound-msc](http://www.bcu.ac.uk/medical-ultrasound-msc)

## PgDip Mental Health - Postgraduate Diploma Approved Mental Health Practitioner

Full-time. September 2019 or January 2020.

[www.bcu.ac.uk/mental-health-pgdip](http://www.bcu.ac.uk/mental-health-pgdip)

## MSc (pre-registration) Physiotherapy

Full-time. January 2019.

[www.bcu.ac.uk/physio-msc](http://www.bcu.ac.uk/physio-msc)

## Module / MSc / PgDip / PgCert Professional Practice

Short Course. September 2019 or February 2020.

[www.bcu.ac.uk/nursing-professional-practice](http://www.bcu.ac.uk/nursing-professional-practice)

## MSc / PgCert / PgDip Public Health

Full-time or part-time. September 2019.

[www.bcu.ac.uk/public-health-msc](http://www.bcu.ac.uk/public-health-msc)

## Module / MSc / PgCert / PgDip Radiography

Part-time. January 2019.

[www.bcu.ac.uk/radiography](http://www.bcu.ac.uk/radiography)

## Module / MSc / PgCert/PgDip Safeguarding

Part-time. September 2019.

[www.bcu.ac.uk/safeguarding-msc](http://www.bcu.ac.uk/safeguarding-msc)

## MSc Social Work

Full-time. September 2019.

[www.bcu.ac.uk/social-work-msc](http://www.bcu.ac.uk/social-work-msc)

## PgDip Specialist Community Public Health Nurse (HV/SN)

Full-time or part-time. September 2019.

[www.bcu.ac.uk/specialist-community-pg](http://www.bcu.ac.uk/specialist-community-pg)

# NEXT STEPS

## 1 FIND YOUR COURSE ON OUR WEBSITE

Pop onto our website and find the course you wish to study.



## 2 SPEAK TO AN ACADEMIC

Who better to speak to than the person teaching the course? Every single course page has the option to speak directly to an academic so you can find out the finer details of what you'll learn.



## 3 CHECK YOU MEET THE ENTRY REQUIREMENTS

Once you have found the course you'd like to apply to, it's important that you meet the entry requirements. Some courses require an undergraduate degree in a related subject, while some require a certain amount of work experience. Entry requirements can be found in the individual course listings in our courses section online.



## 4 SPEAK TO THE COURSE ENQUIRIES TEAM

The Course Enquiries Team is a dedicated information and guidance team here to help you find out more about studying at Birmingham City University. We'll provide you with the information you need to make an informed choice about the correct course for you.

Complete our online form or call +44 (0)121 331 5595.

## 5 JOIN US AT AN EVENT

To really get a feel for life at the University, there is nothing better than visiting us in person. At our Open Days, you can chat with staff and students, view our fantastic facilities, learn more about the Students' Union or take a tour of our accommodation. See [www.bcu.ac.uk/pgopen](http://www.bcu.ac.uk/pgopen) for more details. Alternatively, you could visit one of our subject level postgraduate events to get a more personal feel. Visit [www.bcu.ac.uk/pg-events](http://www.bcu.ac.uk/pg-events) for details.



## 6 PREPARE

Prepare your personal statement, references and portfolios if required.



## 7 APPLY DIRECTLY ONLINE

Once you're ready, you can apply directly for the course on our website. All you need to do is register for an account and you'll have step by step instructions on what to do next.

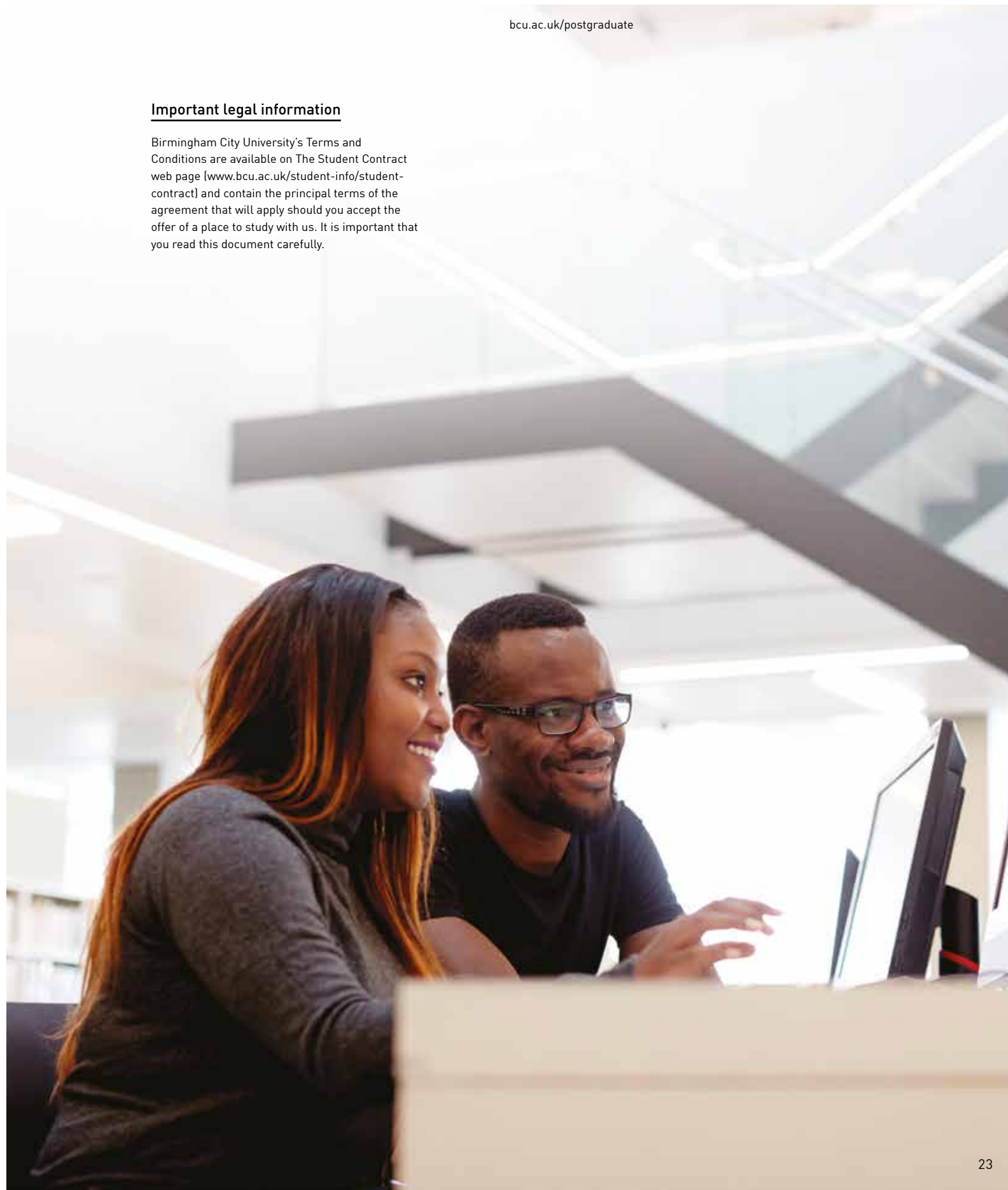


## 8 RECEIVE AN OFFER

Once we've received all of your documents, we'll let you know if you have been successful. You may need to supply extra documents but we'll let you know. Then you'll need to accept your place to receive information about joining us.

### Important legal information

Birmingham City University's Terms and Conditions are available on The Student Contract web page ([www.bcu.ac.uk/student-info/student-contract](http://www.bcu.ac.uk/student-info/student-contract)) and contain the principal terms of the agreement that will apply should you accept the offer of a place to study with us. It is important that you read this document carefully.



[www.bcu.ac.uk/postgraduate](http://www.bcu.ac.uk/postgraduate)  
+44 (0)121 331 5595

-  [bcupostgrad](https://www.facebook.com/bcupostgrad)
-  [birminghamcityuni](https://www.youtube.com/birminghamcityuni)
-  [@myBCU](https://twitter.com/myBCU)
-  [@myBCUresearch](https://twitter.com/myBCUresearch)
-  [myBCU](https://www.instagram.com/myBCU)
-  [blogs.bcu.ac.uk/views](http://blogs.bcu.ac.uk/views)