



I AM BCU

MEET US ABROAD


We have representatives in most countries; check out our website for more details:


www.bcu.ac.uk/your-country

T: +44 (0) 121 331 5389

E: international.enquiries@bcu.ac.uk

www.bcu.ac.uk/international

 @MyBCU

 /birminghamcityuniversityinternational

International Guide
2020/21

CONTENTS

4	Welcome to our University	38	Inspiring staff
8	Why study with us?	42	Our graduates
10	The heart of the UK	44	Snapped at BCU
12	The city is your campus	46	City life
14	Our campuses	50	Student stories
20	The facilities you need	52	Our courses
24	Our Research	70	Applying
26	A place to call home	74	Entry requirements
28	Your Students' Union	76	Foundation programmes
30	Get into sport	78	Fees and living costs
32	First-class support	80	Financing your degree
34	Go abroad	82	Your arrival
36	On course to a career		





**7TH IN THE
UK FOR
EMPLOYABILITY***

*Destinations of Leavers from Higher Education (DLHE) survey 16/17. Multi-faculty universities (excluding specialist institutions with fewer than 1,000 students).

WELCOME

BIRMINGHAM CITY UNIVERSITY IS SITUATED IN THE HEART OF BIRMINGHAM, WHICH IN TURN IS LOCATED IN THE CENTRE OF THE UK. WE ARE IDEALLY PLACED TO EXPERIENCE THE EXCITING CULTURAL, SOCIAL, ECONOMIC AND PHYSICAL CHANGES THAT ARE TRANSFORMING OUR CITY FOR THE FUTURE.

Located just over an hour from London, we offer our students a friendly study environment in the UK's second-largest city, as well as outstanding facilities to support in their development and academic career.

We've built strong partnerships with both students and industry professionals to offer an inspirational learning environment. We've helped to enrich the lives of leading architects, designers, lawyers, engineers, healthcare professionals, musicians and many more.

Our innovative teaching methods, ground-breaking research and industry collaborations are backed by around 50 professional accreditations, providing you with an education that not only works in the classroom, but in the real world for when you graduate.

You'll share your university with 24,500 students from over 100 different countries, and we ensure that everyone feels right at home here in Birmingham with guaranteed accommodation for international students,

a meet and greet service at Birmingham Airport and a friendly Student Services team whose priority is to help make your move between countries as easy as possible.

This guide will give you a flavour of the exciting courses you can study at Birmingham City University. If you would like to know more, please don't hesitate to get in touch and we hope to see you in person soon.

Please note that the information in this guide is aimed at applicants starting their course at Birmingham City University in 2020/21 and should be read in conjunction with the information available on the course web pages.

IMPORTANT LEGAL INFORMATION

Birmingham City University's Terms and Conditions are available on The Student Contract web page www.bcu.ac.uk/student-info/student-contract. The Terms and Conditions set out the basis of the legal contract between you and the University in the event you accept an offer of a place to study with us. It is important that you read this document carefully.

I AM BCU

EVERYONE PICTURED BELOW IS A STUDENT OR RECENT GRADUATE OF BIRMINGHAM CITY UNIVERSITY. IN THEIR OWN WORDS, THIS IS WHAT THEY LOVE ABOUT BCU.

ANH
MA International Human
Resource Management
- Vietnam -

"The study experience at BCU is priceless to me. It isn't just about how amazing the course is, it's also about building friendships, enhancing your travel experience and transforming yourself."

RENEE
MA Arts and
Project Management
- Jamaica -

"What I have learned here goes beyond academic knowledge. It's more about joining a network of creative and like-minded people. Hard working, real, purposeful energy that all merges together; this is what makes the BCU family."

JAKE
BA (Hons) Marketing
- UK -

"After visiting BCU at an open day, I knew this was the university for me. The staff, the course and the facilities were all that I had imagined a university to be."

ZANUB
LLB (Hons) Law
- UK -

"Before coming to BCU, I was shy and quite reserved. I have become so much more confident and have gotten involved in so many opportunities; it's been the best decision I've made."

YEE
MA Visual Communication
- Malaysia -

"Studying at BCU has led me to achieve so much - meeting illustrators, enhancing my research techniques, exploring new topics; it's because of BCU that I have been able to accomplish so many things."

INNA-MARIE
MA Design Management
BA (Hons) Product Design
- Finland -

"I have had so many opportunities at BCU that in turn have allowed me to help and support other students, this is what I'm most proud of about being a student here."

SUNAN
PhD Construction
- Pakistan -

"It amazes me just how diverse and welcoming BCU is in regards to students from other countries and communities. It's fantastic seeing how many opportunities there are here."

YANLING
MA Visual Communication
- China -

"Like a friend, if I am ever in need of support or feel worried, I will look to my BCU community for help or advice."

HAAR
MMus Music Technology
- China -

"If I go back to China to work and live, I will tell the people that are closest to me that I have a home in Birmingham, and in BCU."

CHIOMA
MSc Management and
International Business
- Nigeria -

"Leaving my home country and studying in England was an opportunity I have always looked forward to and BCU made the journey worth it."



WHY STUDY WITH US?

HERE ARE OUR TOP 10 REASONS TO CHOOSE BIRMINGHAM CITY UNIVERSITY.

5 LEARN FROM THE BEST

Many of our teaching staff come from and maintain links with industry. Ten are National Teaching Fellows – awarded for excellence in university teaching and learning. We received silver status for quality of teaching in the Teaching Excellence Framework (TEF) 2017. See page 38.

6 PRACTICE-BASED RESEARCH

Almost 90% of our research was judged to have delivered ‘outstanding’ or ‘very considerable’ external impact in the most recent review, the Research Excellence Framework 2014. See page 24.

1 WORK WITH GLOBAL BRANDS

We have a large number of industry partners and work with big-name employers like the BBC, the NHS, Jaguar Land Rover, Cisco, Microsoft and the Royal Shakespeare Company. All of our courses incorporate work-related experience, with many giving the option of a year-long placement.

7 £1.2 MILLION IN SCHOLARSHIPS

Every year we provide a number of scholarships recognising the talents of our international students, which are applied towards the cost of tuition fees.

2 INTERNATIONALLY ACCREDITED COURSES

We have around 50 internationally recognised accreditations for our courses from such bodies as the Institution of Engineering and Technology, Chartered Institute of Management Accountants and Royal Institute of British Architects.

8 EARN WHILE YOU LEARN

Our student employment agency, OpportUNITY – Student Jobs on Campus, allows you to apply for paid roles at the University, gaining experience in crucial aspects of job applications and valuable feedback on your work.

3 A GLOBAL CITY

Study with us and you will be located at the heart of the UK’s second largest city – with all its social and employment possibilities. In fact, Birmingham was recently declared the most rapidly improving city in the country in which to live and work (Good Growth for Cities index 2017). See page 10.

9 INVESTING IN YOUR FUTURE

We are currently undertaking a £340 million investment programme in industry-standard, state-of-the-art facilities to ensure you have the best possible environment for practice-based learning. See page 20.

4 ENHANCING CAREER PROSPECTS

We offer career support and advice throughout your time with us and for up to three years after you graduate. Our Graduate+ scheme embeds career-related skills into every one of our degree courses, from becoming a course representative to studying abroad. See page 36.

10 97% EMPLOYED/ IN FURTHER STUDY

Our commitment to ensuring students develop the skills and experience employers need means that 97% of our undergraduates and 96% of our postgraduates are in employment or further study within six months of graduation (Destinations of Leavers from Higher Education survey 2016/17).

THE HEART OF THE UK

NOT ONLY IS BIRMINGHAM ONE OF THE UK'S MOST EXCITING AND DIVERSE CITIES; IT IS ALSO ONE OF THE MOST ACCESSIBLE.

We are at the centre of the UK's road, rail and coach networks, so travelling further afield is no problem, while commuting from the surrounding area to our centrally located campuses is easy to do.

Local transport is also excellent, with a network of trains, buses and a recently-extended tram network providing easy access to all University sites. For more information on our campus locations within the city, see page 14.

www.bcu.ac.uk/maps



Library of Birmingham



Bullring



Birmingham Town Hall



🚆 TRAINS:

BIRMINGHAM – LONDON	1h 26m
BIRMINGHAM – MANCHESTER	1h 30m
BIRMINGHAM – EDINBURGH	4h 50m

All journey times and routes are approximate.

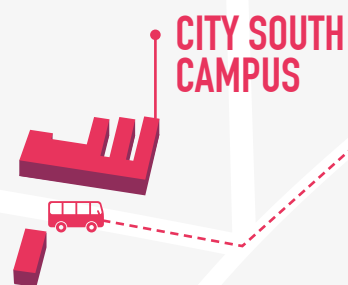
✈️ FLIGHTS:




BIRMINGHAM – AMSTERDAM	1h 15m
BIRMINGHAM – PARIS	1h 20m
BIRMINGHAM – DUBAI	7h 10m
BIRMINGHAM – ISLAMABAD	7h 40m
BIRMINGHAM – NEW DELHI	8h 30m

All journey times are approximate and may involve transfers.

THE CITY IS YOUR CAMPUS

JOIN US AT BIRMINGHAM CITY UNIVERSITY AND YOU WILL BE RIGHT IN THE HEART OF A FORWARD-LOOKING AND VIBRANT CITY WITH PLENTY TO DO CLOSE AT HAND.



-  15-MINUTE WALK FROM NEW STREET STATION TO CITY CENTRE CAMPUS
-  10-MINUTE WALK FROM MOOR STREET STATION TO CITY CENTRE CAMPUS
-  20-MINUTE BUS JOURNEY FROM BULLRING TO CITY SOUTH CAMPUS

-  BIRMINGHAM CITY UNIVERSITY CAMPUS
-  ACCOMMODATION
-  RAILWAY STATIONS
-  CITY CENTRE AREAS OF INTEREST



CITY CENTRE CAMPUS

FACILITIES INCLUDE:

- Cisco networking lab
- Replica city trading room
- Curzon Print Centre
- Dedicated IT and student services support
- Four industry-standard TV studios
- Geotechnical soils lab
- Green screen MILO studio
- Hydraulics lab
- Mock law courts
- Library with access to printed and online resources
- Noise and vibration cells
- Photography studios and darkrooms
- Print, textiles, wood, ceramics and glass workshops
- Radio studios and editing suites
- Recording facilities and vintage mixing desk
- Robotic laboratory
- Specialist drama studios
- Students' Union.



WE ARE INVESTING £340 MILLION ACROSS OUR BUILDINGS AND FACILITIES TO GIVE YOU THE VERY BEST LEARNING ENVIRONMENT TO SHAPE YOUR EXPERIENCE.

This campus at the heart of Birmingham's fast-developing Eastside district, and just a short walk from the city centre, is where most students on courses including Music, Design, Media, Acting, Engineering, Computing, Digital Technology, Built Environment, Law, Social Science, Business and English are based.

The campus also features library, IT and student support facilities, giving a modern, dynamic space for you to learn in with state-of-the-art resources. An extension to the campus opened in 2018, with more learning space, another IT suite and an innovative group-working lecture theatre. It also provides a base for our Students' Union, incorporating the Grade II listed Eagle and Ball pub.

Our facilities are located alongside Eastside City Park – the first new urban park in Birmingham for over 130 years, which provides a superb space for relaxing in summer as well as a venue for events and activities.



ROYAL BIRMINGHAM CONSERVATOIRE

A new £57 million building at our City Centre Campus, opened in 2017, provides a conservatoire for the 21st Century. Our music students benefit from a new concert hall, private rehearsal and practice rooms, and teaching spaces for musicians from a variety of disciplines.



CITY SOUTH CAMPUS

FACILITIES INCLUDE:

- Mock hospital wards and operating theatre
- Virtual radiotherapy and radiography imaging suites
- Simulated home environment
- Replica school classrooms
- Physiology and biomedical science laboratories.

Social Kitchen
City South Campus

STUDENTS ON HEALTH, SPORT AND LIFE SCIENCES, AND EDUCATION COURSES ARE BASED ON OUR STATE-OF-THE-ART CAMPUS IN THE LEAFY SUBURB OF EDGBASTON, WITHIN EASY REACH OF THE CITY CENTRE.

Our facilities replicate the real world of health, education, sport and life sciences, including an operating theatre, hospital wards and a fully equipped midwifery skills/birthing room, as well as sport and life sciences laboratories and replica classrooms for use by our teaching students.

We have invested £41 million in new facilities on this site, including specialist laboratories for a newly created School of Life Sciences, as well as a new home for the School of Education, which opened in 2018.



SPORT AND LIFE SCIENCES

The creation of our new suite of courses in Sport and Life Sciences is yet another exciting development at Birmingham City University.

Not only have we invested in a new building to house the laboratories and teaching spaces needed, but we also plan to open up these facilities to benefit all students and the wider community.

All courses have been co-designed with employers and are endorsed or accredited by professional bodies where appropriate.

By expanding our provision to these areas, we will be helping to tackle some of the biggest challenges facing society today, such as obesity and unhealthy lifestyles, as well as supporting the UK's ambitions for success at international sporting tournaments, including the 2022 Commonwealth Games in Birmingham!





SCHOOL OF JEWELLERY

IN ADDITION TO OUR TWO MAIN CAMPUSES, OUR ART AND JEWELLERY STUDENTS BENEFIT FROM STUDYING AT SPECIALIST LOCATIONS IN THE CITY.

Our jewellery school stands in a modern and spacious building in Vittoria Street, right in the heart of Birmingham's famous Jewellery Quarter where much of the jewellery made in Britain today is manufactured. Gemmology courses are based in a purpose-built area within Birmingham's new Assay Office.

A new postgraduate facility in the Jewellery Quarter's St Paul's Square offers an improved specialist jewellery library, design studios and more.

FACILITIES INCLUDE:

- Specialist studio workshops
- Casting facility and electroplating laboratory
- Machine workshop including laser welders and laser cutters
- Exhibition space and specialist library
- Stores for materials and tools.



BIRMINGHAM SCHOOL OF ART

THIS GRADE I LISTED VENETIAN GOTHIC BUILDING IN MARGARET STREET HOUSES A WONDERFUL COMPLEX OF TRADITIONAL-STYLE WORKSHOPS AND TEACHING AND EXHIBITION SPACE.

FACILITIES INCLUDE:

- Light and airy studios
- Gallery and installation space
- Fine art library
- Woodwork, metal, plaster, fibreglass and ceramics workshops
- Digital media, print and photography workshops.



Floating mezzanine levels, glass lifts and cutting-edge workspaces sit comfortably beside the original stained-glass windows and mosaic floors of this glorious purpose-built art school.

We're right in the city centre, perfectly placed next to the city's main museum and art gallery. There are purpose-built spaces throughout the building to present students' work in a thriving, exhibition-orientated home.

THE FACILITIES YOU NEED



TV STUDIOS

Our four industry-standard TV studios featuring the latest Sony equipment and a green screen MILO facility.

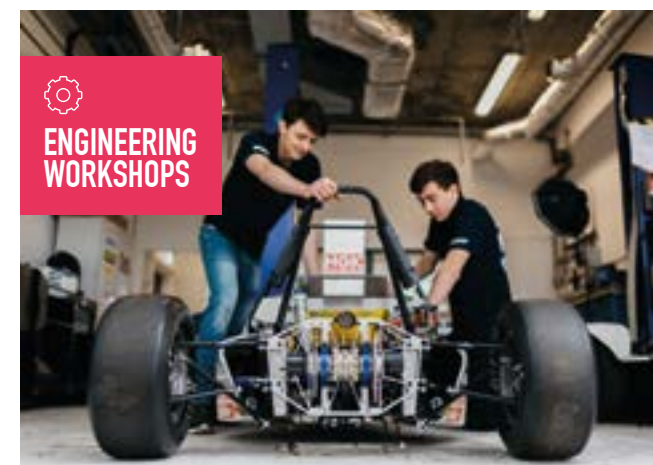
WHEN YOU CHOOSE TO STUDY AT BIRMINGHAM CITY UNIVERSITY, YOU CAN BE CONFIDENT THAT YOUR LEARNING NEEDS ARE OUR TOP PRIORITY.

In addition to high-quality facilities specific to your course, you will find a range of general learning resources which provide you with all the help you need to succeed.

TURN OVER.
THERE'S MORE



TRADING ROOM



ENGINEERING WORKSHOPS



TEXTILE STUDIOS



IT RESOURCES

You will have access to your own email account as soon as you accept an unconditional offer from us, free secure file storage and free University wi-fi, as well as the use of open-access computers within every library and faculty.

Our IT Help Desk is on hand to resolve any technical issues, while our Follow-Me printing system lets you print from any printer on campus (charges apply).

www.bcu.ac.uk/it



LIBRARY AND LEARNING RESOURCES

You will have access to a wide range of online and many print resources with 24/7 support. These have been selected in partnership with your lecturers, so are quality assured and relevant to your course.

If you need help in person or online, our expert staff and back-up services are there to help you get the best from the time you invest in developing your information-seeking skills.

We have been accredited to the Customer Service Excellence standard; we focus on delivery, timeliness, information, professionalism and staff attitude. We value collaborative working, and include the student voice alongside our expertise to improve your services.

www.bcu.ac.uk/library

OUR RESEARCH

RESEARCH AT BIRMINGHAM CITY UNIVERSITY UNDERPINS OUR LEARNING AND TEACHING, IS DEMAND LED AND INCREASINGLY INTERDISCIPLINARY.

AREAS OF RESEARCH

- Architecture, Built Environment and Planning
- Art and Design
- Business and Management
- Computing
- Education
- Engineering
- English
- Health
- Law
- Media and Cultural Studies
- Music and Performance
- Social Sciences

If you'd like to find out more, please visit www.bcu.ac.uk/research.



WE ARE COMMITTED TO DISCOVERING NEW KNOWLEDGE AND DELIVERING REAL BENEFIT TO CULTURE, INDUSTRY, SOCIETY AND THE ENVIRONMENT.

Our researchers work across disciplines and with collaborators locally, nationally and internationally to produce research of high impact to society, the environment, culture and the economy. We have launched the UK's first Centre for Brexit Studies, researching all aspects of the UK's vote to leave the EU, including the impact on the British and European economies.

Our Research Excellence Framework (REF) 2014 results demonstrate the public benefit of our research to society and the economy, with 90% deemed to have either 'outstanding' or 'very considerable' impact.



CASE STUDY:

USING SMART TECHNOLOGY TO TACKLE GLOBAL WATER ISSUES



Birmingham City University has teamed up with Greek technology firm Singular Logic to help solve major global issues such as water loss and water wastage. The four-year project, named Internet of Things Smart Water Innovative Networks (IoT4Win), will see academics work alongside industry partners in the UK, Romania, Greece and Spain to find ways to improve the efficiency of water systems.

An array of smart technology sensors will be put to work to monitor and provide real-time updates on the quality, quantity and demand for water in urban areas and find new ways to provide accessible and affordable water.

The developed technology could have a major impact on future policy by finding ways to improve the efficiency and performance of water systems across the UK and Europe. Three researchers will be appointed to the scheme and earn PhDs from Birmingham City University as part of the project to create a legacy of knowledge in the smart water sector, which could transform the way water utility companies and authorities operate in the future.

www.bcu.ac.uk/research-smart-tech-water



A PLACE TO CALL HOME

WE OFFER ACCOMMODATION AT VARIOUS LOCATIONS AROUND THE CITY. OUR HALLS OF RESIDENCE ARE NEAR TO OUR CAMPUSES AND PUBLIC TRANSPORT, SO YOU'RE IDEALLY LOCATED FOR STUDYING AND SOCIALISING.

WANT TO SEE MORE?

Visit bcu.ac.uk/accommodation to view our halls.



Jennens Court social space

Leaving home for university is one of the biggest moves you will ever make. And with the excitement, freedom and independence of living in halls, it is the perfect way to meet new friends.

As an international student you are guaranteed Birmingham City University accommodation for the duration of your course if you apply by 31 August.

We encourage all new international students go into University halls of residence because it gives you the opportunity to meet other students and get to know the local area.

If you decide that you want to stay in private accommodation we have our own letting agency - 'Birmingham City Student Homes,' which we recommend to find private housing.

www.bcu.ac.uk/accommodation



En suite room at Staniforth House

AT A GLANCE



Over 2,000 rooms available



Easily accessible – close to public transport links



CCTV coverage and security staff at each site



Access to free wi-fi



Shared kitchen, living areas, laundry facilities and common rooms



University Locks flat



YOUR STUDENTS' UNION

WELCOME TO BCUSU – YOUR STUDENTS' UNION!



Support and advice



Help finding your student home



Volunteering projects on a local, national or international scale



Campus shops for all your daily student essentials



A voice throughout your time here



Over 200 student groups to get involved in



AS SOON AS YOU ENROL, YOU'LL BE ASKED TO JOIN THE STUDENTS' UNION. MEMBERSHIP IS FREE, YOU WON'T HAVE ANY FORMS TO COMPLETE AND IT'S WELL WORTH BEING A MEMBER AS WE'RE ALWAYS HERE TO HELP YOU THROUGHOUT YOUR STUDENT JOURNEY.



INTERESTED IN SOCIETIES?

We sent our intrepid vlogger Joey to try out some of the societies at BCU. See how he gets on at www.bcu.ac.uk/societies

We like to consider that you're part of our family and that you will be for the entire time you study here. Being a part of the BCUSU family means you have free access to all of our amazing services and facilities, including:

Support and advice from our specially trained advisers on a range of topics, including money, health, academia and housing.

A voice throughout your time here: we guarantee you will be listened to and represented by us! We campaign on your behalf to make your student experience even better.

Over 200 student groups for you to get involved in, including sports, activities, religion, special interest and subject specific. As well as a great way to meet new people, being a member or leading a student group will look great on your CV! Volunteering projects on a local, national

or international scale will enhance your existing skills and help you to learn new ones.

Our very own letting agency to help you find your next student home without the hassle.

Exciting entertainment to make your social life as fun-filled as possible – it's not all academic, you know!

A unique, Grade II listed venue at the City Centre Campus with special prices on all our food and drinks and a special entertainment programme just for you.

Shops on our campuses, offering all of those essential items you'll need.

We're run by students for students and each year we ask all our students to vote for who they want to lead BCUSU.

www.bcu.ac.uk/societies

GET INTO SPORT

✉ sport@bcu.ac.uk

🐦 [@BCUSport](https://twitter.com/BCUSport)

📘 [BCUSport](https://www.facebook.com/BCUSport)

📷 [@BCUSport](https://www.instagram.com/BCUSport)



Over 25 sports clubs
that you can join



Complete beginners
welcome



Meet new people from
different courses



Sports scholarships
available



WHATEVER COURSE YOU STUDY, YOU'LL BE ABLE TO ACCESS A RANGE OF SPORT AND PHYSICAL ACTIVITY OPPORTUNITIES HERE AT BIRMINGHAM CITY UNIVERSITY. WHETHER YOU WANT TO COMPETE AT A HIGH LEVEL OR JUST TRY SOMETHING NEW, WE HAVE AN ACTIVITY SUITABLE FOR YOU!

From rowing to rugby and table tennis to tennis, we have teams in over 25 different sports, with 18 of those sports offering the chance to compete in the inter-university BUCS (British University and Colleges Sports) league.

If competitive sport isn't for you, many of our students take part just for fun - enhancing their health and fitness, making new friends and providing an occasional break from their studies.

We also offer the chance to take part in courses to become a coach or referee, allowing you to contribute to the development of sport here or in the wider community.

The placement opportunities that arise from our contacts in the sporting world benefit all students, not just those on sport-related courses - from working for Aston Villa as part of the matchday media team to developing the software for an athlete monitoring app, there are a wide range of opportunities.



OUR PARTNERS

We have developed partnerships with a range of sporting bodies to enhance the student experience through placement, coaching and volunteering opportunities.

- Warwickshire County Cricket Club
- Team Birmingham Basketball Club
- Aston Villa FC
- City of Birmingham Swimming Club
- Moseley Rugby Club
- England Squash
- The Rugby Football Union
- Birmingham City University Futsal Team
- Edgbaston Priory Club

FIRST-CLASS SUPPORT

GOT A QUESTION? ASK US!

You can ask questions in person at help desks around the faculty buildings, through our online enquiry service or using the iBCU app.

ACCESSING ADVICE HAS NEVER BEEN EASIER. THROUGHOUT YOUR STUDENT JOURNEY, YOU WILL HAVE ACCESS TO OUR FULL RANGE OF SUPPORT SERVICES, INCLUDING CAREERS ADVICE, MENTORING, ADVICE ON FINANCE AND ACADEMIC MATTERS, PROFESSIONAL DEVELOPMENT EVENTS AND MORE.

SUPPORTING YOUR WELLBEING

Your health and happiness are important to us and there are a wide range of support services available in areas including disability and dyslexia, counselling, mental health and wellbeing, healthcare and chaplaincy. We offer ongoing support, workshops, and events such as our Mental Health Day which included tea and talk sessions, music therapy, and therapy dogs!

CONFLICT RESOLUTION AND COMPLAINTS

Most people make friends for life when at university, but sometimes there can be disagreements. We can help you resolve concerns before they escalate. If you think that we've fallen short in some way, you can let us know and we'll work with you to try to resolve it. Your time at university is important to us and we want to help you get the most out of your studies.

DISABILITY

Whether you have already disclosed your disability to us, or believe that you might need help with a substantial long-term condition that is having an adverse impact on your ability to do normal daily activities, our Enablement team will be able to work with you to find the support you need. We recommend talking to us as soon as you can so that you can get the greatest benefit out of any support we can make available to you.

LOOK AFTER YOUR FINANCES

We know that financial health can impact on your physical and mental wellbeing. To help you balance your budget we can offer advice and support on the money you have, help you seek paid work, and give you tips on making your money go further.

For anyone struggling with their finances we offer a series of hardship funds to make things a little easier while you concentrate on your studies. We run various activities during National Student Money Week aimed at checking your financial health and sharing useful study hacks to make the most of your resources including time and money.

CHAPLAINCY

Faith plays a large part in the life of many of our students. Our chaplains are friendly and welcoming, and are happy to talk to students of any faith or none during times of personal challenge or as an alternative source of support.

www.bcu.ac.uk/student-services

GO ABROAD

As a student at Birmingham City University, you may have the opportunity to study abroad at one of our partner universities as part of an international exchange programme linked to your degree.

ERASMUS +

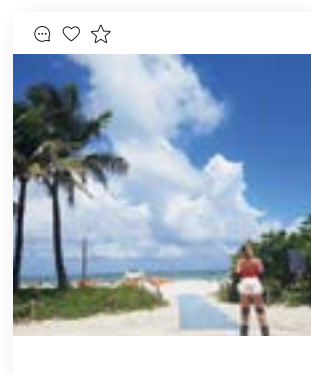
You can also apply to study or work abroad with Erasmus+ where you may benefit from a grant that can contribute to some of the costs during your stay overseas. There are also a number of fantastic international summer programmes which can be taken outside of your degree!

BCU INTERNATIONAL SUMMER SCHOOL

Our International Summer School offers you the perfect opportunity to spend three weeks sampling UK university life, as well as giving you the chance to enhance your academic skills and visit some of the UK's historic towns and cities.

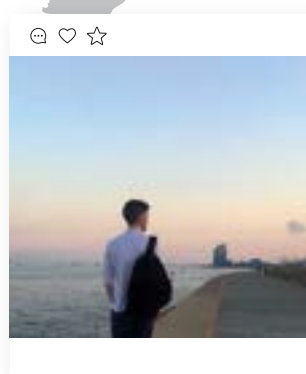
www.bcu.ac.uk/go-abroad

www.bcu.ac.uk/summer-school



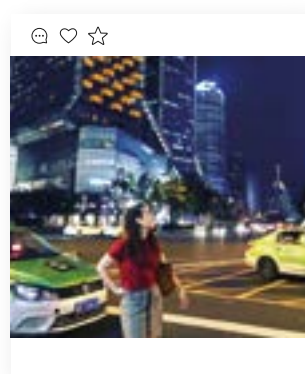
NICOLE WALSH
Mexico

I'd never travelled outside of Europe before so when I had the opportunity to go to Mexico, I jumped at the chance. I went by myself and learned how to meet new people and come out of my comfort zone. I've also learned that Mexicans are the friendliest people I have ever met!



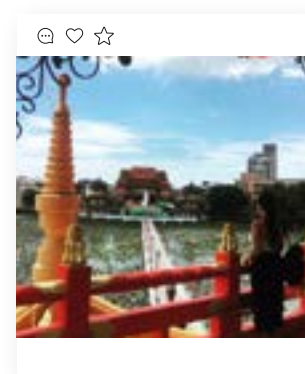
CONOR DENNEHY
Spain

My Erasmus year in Barcelona was truly amazing! I met many people from around the world with different cultures and traditions, while also immersing myself in the Spanish culture. The architecture, the food and the lifestyle are only a few of the amazing aspects of your study abroad life that you will experience.



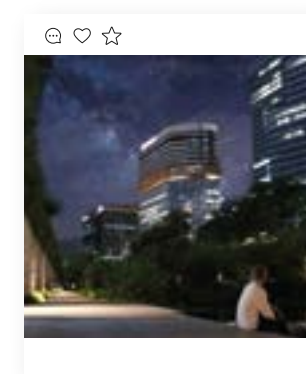
CLAUDIA FERRARETTO
China

I could never have imagined being able to take part in such an unforgettable experience, in an amazing, inspirational, and vibrant city. Thanks to the summer school at one of BCU's partner universities, I had the opportunity, not only to grow as a person, but also to enhance my experiences and background to apply to my studies and on a future career!



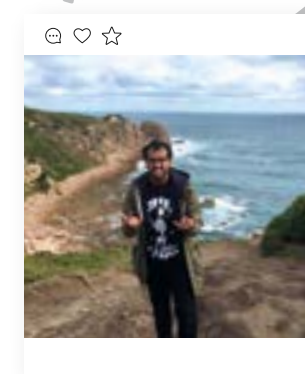
KUSH LAD
Taiwan

Who knew such a tiny island could overflow with so much love, kindness and memories for a lifetime. Yuntech enabled us to learn basic Mandarin in just 10 days, guided and taught by the most passionate teachers. The study partners welcomed us, they immersed us into their culture, their families, and the beauty of Taiwan in each of their cities or districts.



JACK HICKS
South Korea

South Korea was perhaps the most interesting and significant experience of my life. Travelling to the other side of the world has opened my eyes and changed my perspective on life forever.



HASSAN UL-HAQ
Australia

My experience in Melbourne is one that I will never forget and it has also allowed me to experience another country's creative industry. Not only this but it has allowed me to meet some incredible individuals who have inspired me and allowed me to think outside my own creative bubble.

ON COURSE TO A CAREER

GAIN A COMPETITIVE ADVANTAGE

Our Graduate+ programme allows you to build up experience through a range of extracurricular, employment-related activities. You will work with our Graduate+ team to undertake a skills audit and devise a personal programme of activities and collate evidence for what you've done, using an online e-portfolio.



WORKING WITH INDUSTRY

Many of our courses offer you the chance to work on live projects with businesses or get involved with community projects related to your course. Our business innovation centre, STEAMhouse, features a range of co-working, artist production, incubation and networking facilities for small and medium-sized businesses in the West Midlands.

EARN WHILE YOU LEARN

Our students are given the opportunity to fill many part-time temporary positions within the University. This allows you to work while you study with us, fitting the job around your course. By taking part in the scheme, you will gain valuable experiences and employability skills, including taking part in a realistic application process, enhancing your prospects in the job market.



COURSES BUILT FOR YOUR FUTURE

Our courses were designed with input from current students and industry professionals, ensuring they meet your needs and those of potential employers. Employability skills, enterprise and practice-based projects are built into the curriculum, giving you experience of the career you may wish to pursue.

A range of learning, assessment and feedback methods are used and you'll have the chance to study a range of optional modules, so you can tailor your learning to your own interests.



ACHIEVE YOUR FULL POTENTIAL

To support you in achieving your full potential, the Centre for Academic Success is available to help with your study, literacy and numeracy skills. You can attend one of our workshops or book a one-to-one tutorial to discuss aspects of your work.



GET THE CAREER SUPPORT YOU NEED

We offer a wide range of online and face-to-face services to help you develop your employability skills, plan your career and access the latest job opportunities. This includes one-to-one support with job applications and interview preparation, and mentors from a range of sectors. Our students can access careers support throughout their time as a student and for up to three years after graduating.

“The global leisure sector is growing all the time, and we want our students to be at the forefront of the industry in the future. That is why we’re giving them the skills they need to succeed.”

RICHARD ODDY

Senior Lecturer in Management

Richard introduced the new Event, Venue and Experience Management course in our Business School, the first course of its kind in the UK to be accredited by the Chartered Management Institute.



MEET THE STAFF WHO INSPIRE

**AT BIRMINGHAM CITY UNIVERSITY, YOU
WILL LEARN FROM THOSE WHO HAVE
BEEN THERE AND DONE IT.**

Many of our 1,800-strong team of academic staff are practising professionals and experts in their sector, including 10 National Teaching Fellows.

You will receive first-hand and up-to-date knowledge directly from those in the know, be it health practitioners, real estate specialists or professional musicians.

To find out more, visit www.bcu.ac.uk/our-staff.



“My goal is to use my industry insight to teach students different ways of solving problems surrounding digital forensic investigations. This involves building on the technological knowledge they don’t realise they already possess.”

< RICHARD HALE >
Lecturer of Computer Forensics

An expert in Digital Forensics, Richard first started working in the field in 2008. He moved to academia with extensive industry experience after working with two of the largest private digital forensics companies in the UK.



“Our approach is to embed human-centric thinking into our teaching and research, and develop solutions that provide both a healthy environment and healthy communities.”

PROFESSOR LYNSEY MELVILLE >
Director of the Centre for Low Carbon Research

An expert in low carbon technology who is currently leading research into the generation of energy from organic material, such as algae.



“My teaching has enabled our students to research the UN and participate in the meetings of the Human Rights Council. This is world-leading teaching that enables BCU students to help change the world.”

< PROFESSOR JON YORKE >
Professor in Human Rights

An expert in international law and an adviser on the death penalty to the United Nations, the European Union, and the Council of Europe.

“Mooting is a great way to practice and develop your legal skills, so we wrote a book to help students realise their potential. The experiences you’ll gain will benefit you in and out of the classroom.”

DR SARAH COOPER >
Researcher in Law

Dr Cooper co-authored the book Preparing to Moot, after she herself was a successful part of our mooting team during her time studying in our School of Law.



“My role is to make you think and question, to make you question what you think you know, and then to discover new ways of thinking, questioning and understanding.”

ROBERT GIBB >
Course Director of Postgraduate Studies within the School of Visual Communication.

A professionally experienced academic practitioner in a number of different areas, including Photography, Curation, and Fine Art.



OUR GRADUATES

WHETHER IT IS SETTING UP SUCCESSFUL COMPANIES OR CREATING PUBLISHED WORK, OUR GRADUATES ARE SHAPING THE WORLD WITH THE SKILLS THEY HAVE HONED RIGHT HERE.

TO SEE MORE OF OUR FORMER STUDENTS' ACHIEVEMENTS, VISIT WWW.BCU.AC.UK/STORIES.

BLOGGER

LILY PEBBLES

BA (Hons) Marketing, Advertising and PR
- UK -

When Lily began her beauty and lifestyle blog as part of a digital marketing module, she had no idea how many doors would open up for her. Now she runs her YouTube channel and other social media platforms full-time, has become a *Sunday Times* bestselling author with her book *The F Word*, co-hosts an iTunes number 1 podcast 'At Home With' and collaborates with brands such as Waitrose and The White Company.



GRAPHIC ARTIST

YIFAN LING

MA Visual Communication
- China -

Yifan has been creating manga comics professionally since she graduated in 2006. Now she has published more than 20 books internationally and her own online manga story 'Guarding' is now being developed into a television show and film.



JOURNALIST

LAVANYA LAKSHMINARAYANAN

MA Journalism
- India -

Since graduating in 2018 Lavanya has gone on to become a subeditor for The Hindu, a daily newspaper popular in India. She also reports on culture, entertainment and societal topics.



TECHNOLOGIST

IBRAHIM MAGAJI

MSc Enterprise Systems Management
- Nigeria -

Since graduating, Ibrahim has continued to stay in the UK with the help of the University's Tier 1 Graduate Entrepreneurship Visa endorsement.* He is now the CEO of his own company, Digital Green Intercontinental, aiming to harmonise ICT technology with commercial agriculture.

*Please note you can no longer apply for a new Tier 1 (Graduate Entrepreneur) visa. If you want to set up a business in the UK you can apply for a Start-up visa instead.



MARKETER

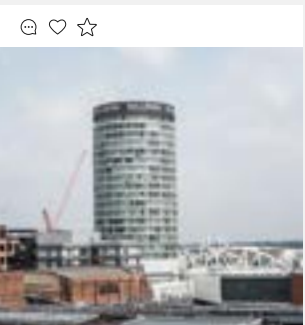
NICK DEARMUN

BA (Hons) Business and Advertising
- UK -

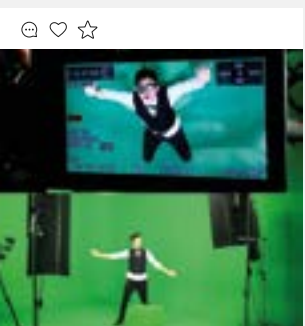
After graduating, Nick worked as an intern in various advertising agencies before getting a job as a marketing assistant for a record label. As a marketing manager for Columbia Records/Sony Music, he worked with Rag'n' Bone Man on his number 1 album, and with Calvin Harris across multiple releases including several number 1 singles. His latest role is as an Account Director at digital agency AKQA Los Angeles.



camellia.nk And sometimes we go back to the beginning to see everything in a new way.



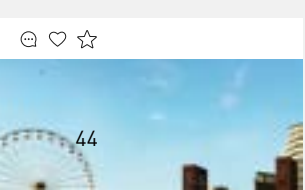
kierandurrantphotography Look where we ended up after the Open Day, Birmingham's Rotunda tower towering above the city.



carrier_cosplay Steampunk time stopper! Good shoot on the green screen getting some awesome shots!




willrobinson Autumnal vibes at BCU today

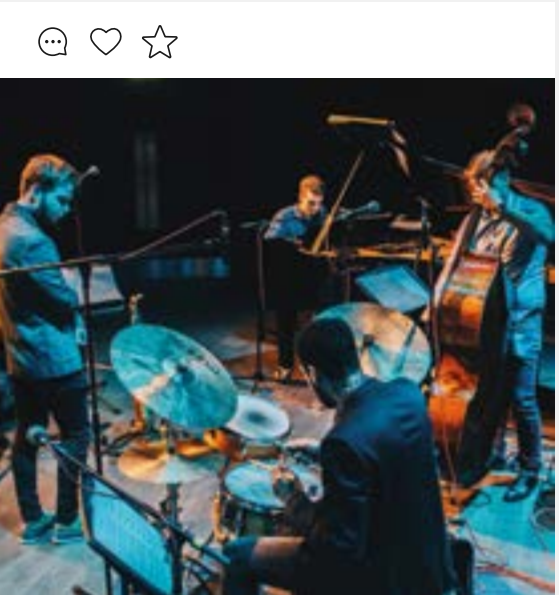


mybcu Digbeth, home to some of Birmingham's best street art.

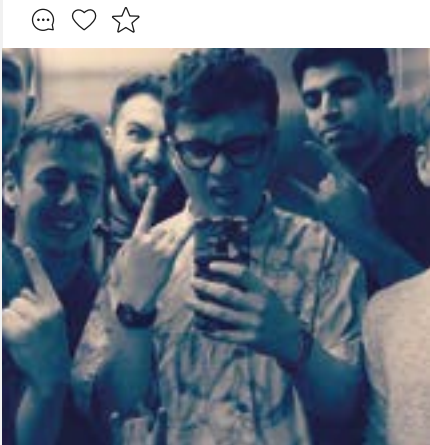
SNAPPED AT BCU

Want a taste of what student life in the city is really like? Take a look at our Instagram profile to see what's going on around our campuses and the city.

 [instagram/mybcu](https://www.instagram.com/mybcu)



harryharryharryharry Swung by to catch @edimusicmay at the Royal Birmingham Conservatoire Jazz Club this evening.



joekapia We came, we saw, we killed the crowd.



maryamwm My week just got better... I graduated with a First Class degree in BA photography



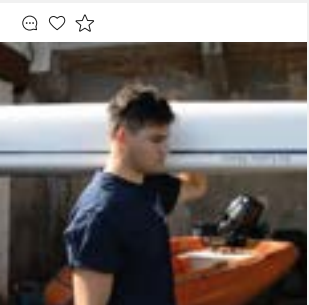
shumixx These people make my heart full



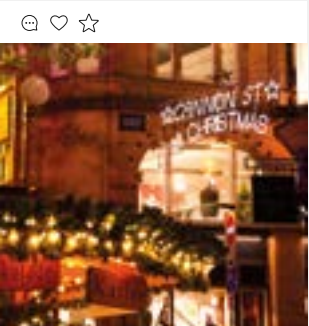
bcusu_extreme_sports_team Squad goals



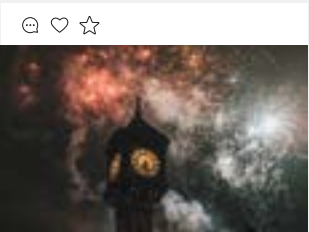
@bcupolo Smiles all around! Club captain Maria at Summer Nationals 2018.



bcurowing Ian Winstanley - This year's BCU rowing president.



vickybeni Canon Street doing Christmas right.



bcu_global Snowday at BCU.



mybcu Where's your favourite study spot on campus?



kierandurrantphotography Birmingham's St Martin's Church glistening under the Bank Holiday sunshine.

MEET OUR VLOGGERS

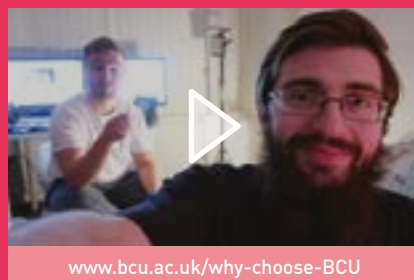
Our students share their experiences and advice on all aspects of applying and preparing for university.



www.bcu.ac.uk/student-life

Student life in Birmingham

University life isn't all about studying and with plenty to see and do in the UK's second largest city, you'll never run out of things to keep you busy.



www.bcu.ac.uk/why-choose-BCU

Why choose BCU?

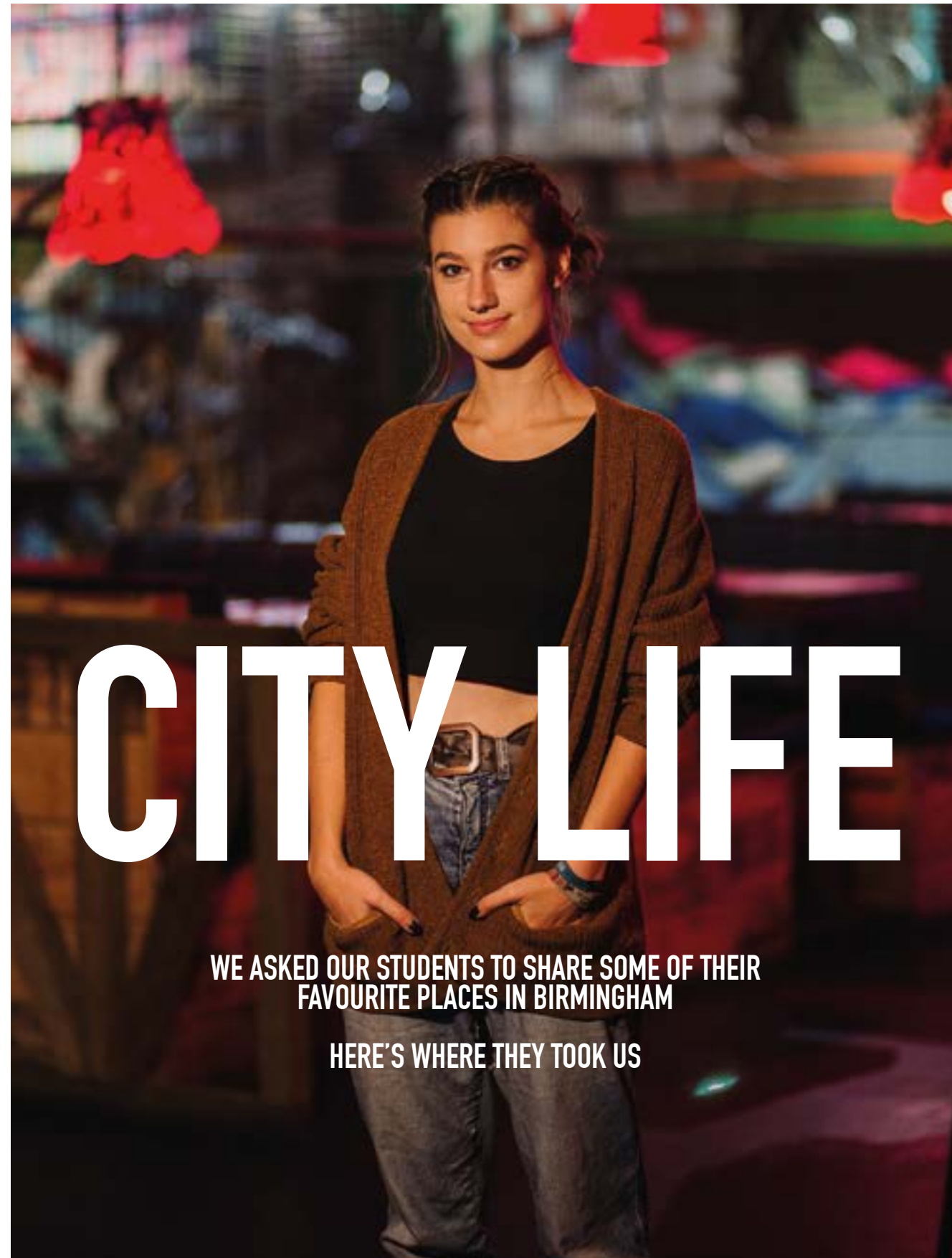
Our student Jamie shares why he decided to study with us and why you'd love to come to BCU too!



www.bcu.ac.uk/why-university

Should I go to university?

If you're sitting on the fence trying to figure if you want to go to uni or not, Joey's tale may help you to make up your mind.



CITY LIFE

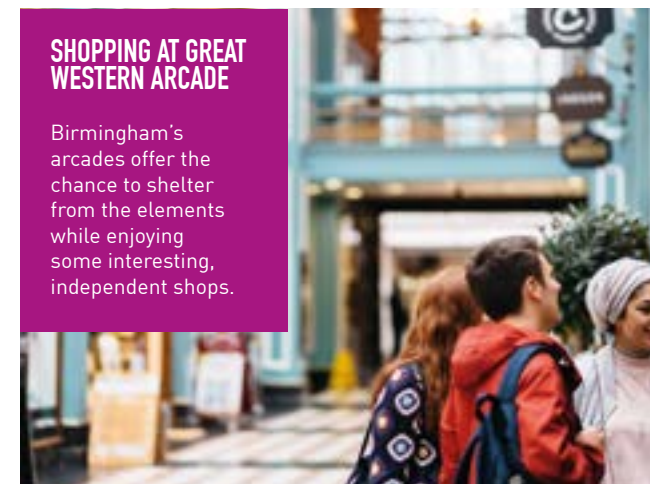
WE ASKED OUR STUDENTS TO SHARE SOME OF THEIR FAVOURITE PLACES IN BIRMINGHAM

HERE'S WHERE THEY TOOK US



STREET FOOD AT DIGBETH DINING CLUB

Head down to Digbeth on a Friday or Saturday for an ever-changing street food selection at Digbeth Dining Club.



SHOPPING AT GREAT WESTERN ARCADE

Birmingham's arcades offer the chance to shelter from the elements while enjoying some interesting, independent shops.



STREET ART IN DIGBETH

Digbeth is well known as Birmingham's cultural hub, with art studios, creative businesses and street art aplenty.



LANE 7, THE MAILBOX

This is bowling like you've never seen it before, complete with walnut lanes, retro arcade games and a UV-lit karaoke bar.



GERMAN CHRISTMAS MARKET

Each Christmas, Birmingham hosts its very own German Market, the largest outside Germany and Austria!

BULLRING SHOPPING CENTRE

Home to a variety of home, beauty and clothing shops, you'll never feel like you're missing out on the latest fashion trends.



GHETTO GOLF

This indoor crazy golf venue incorporates graffiti, street food and cocktails for a truly unique night out!



PINBALL AT TILT

Birmingham has plenty of quirky bars including Tilt, where you can enjoy a game of pinball with your craft beer.



PANCAKES AT CHERRY REDS

Set yourself up for the day with a tasty breakfast from one of Birmingham's popular cafés.



VINTAGE SHOPPING AT COW

Fancy a bit of shopping? As well as big-name stores in the Bullring, we have plenty of quirky independent stores like vintage clothes outlet Cow.



BURGERS AT ORIGINAL PATTY MEN

Having started out at Digbeth Dining Club, the OPM guys now have their own permanent outlet with some of the best burgers in town.



CHINATOWN

With its vibrant decor and authentic cuisine, you'll definitely want to explore our very own Chinatown.



HOT CHOCOLATE AT BOND

There are plenty of places to warm up with a hot drink such as Bond, a café complete with canalside seating.



TAKE A WALK ALONG THE CANAL

Our huge network of canals stretches across the city and is perfect for strolling, jogging or cycling.



THERE'S PLENTY MORE TO SEE AND DO IN BIRMINGHAM - FROM MUSIC AND CULTURE TO TOP-CLASS SPORT, WE HAVE ALL YOUR INTERESTS COVERED.

MUSIC

There's a host of great live music destinations to be found across the city – from sticky-floored pubs and intimate jazz bars to the famous O2 Academy and Jools Holland's Jam House.



SPORTS

Whether you're interested in sport as a participant or a spectator, Birmingham has plenty to offer. The city is set to host the Commonwealth Games in 2022, underlining its reputation as a destination for major sporting events. There are three big-name football clubs nearby and international cricket takes place at Edgbaston.



CULTURE

With a world-class symphony orchestra, royal ballet company and theatres, Birmingham has some of the finest contemporary arts venues in the country, while one of the city's most exciting facilities is the state-of-the-art, £188 million Library of Birmingham.



RELAXING

If you want to get out and about, the city has over 8,000 acres of park and open space, making it one of the UK's greenest cities.



"I decided to take a gap year before I committed to a university and came to the UK to work as an au pair. I fell in love with the country, the city, the language and the people, and I couldn't handle the thought of going back home."

One day on a bus journey through town, the Birmingham School of Art on Margaret Street caught my eye. I thought studying there looked like fun so I immediately sent a message on the Facebook page to get more information about the courses. I'd set my heart on BCU so kept pushing to come here."

JOSI HENGSTWERTH
BA (Hons) Fine Art
- Germany -

I AM BCU

"Since starting at BCU I've realised there are so many students spread all over the city, coming from different backgrounds and with different life goals. I am proud to be part of something bigger and a university that supports me in every area of my education and life."

It's such a gift to be a part of a uni as amazing as BCU."



VICTORIA BENI
BA (Hons) Media
and Communication
- Italy -

"Before coming to BCU I took a gap year and I worked as an English tutor in Florence for high school kids. I knew I wanted to do something creative in my life, along the lines of video editing and photography, but unfortunately, there weren't many qualified practical university courses in the media field in Italy."

I decided I wanted to go abroad to study and I came to the UK to visit multiple schools, mostly in London. I'd missed the open days for BCU but had managed to organise an appointment to be taken round by one of the media tutors."

BCU had everything located in one place for me, and they treated me really well. The vibe was exactly what I was hoping for from a community. I knew then that Birmingham was right place for me to try and see what I could do with my creative skills."

"I'm originally from a small village in India, and I didn't ever really think that I would study at a university in the UK."

I found out about BCU through relatives and decided to apply. When I arrived on campus for my first day, I was astonished that I had finally made it, but knew that the journey ahead was still going to be a difficult one."

The University is like a second home to me. Seeing the number of different students from all backgrounds really made me feel at home instantly."

BCU has opened me up to all cultures, and helped transform me from being a rural villager to an aspirational global change-maker. It has been a big shift, and I never would have thought that I would be in the position I am in today. The University has been a place for me to open up, express myself and realise my potential."

I was born in Punjab, but I was made in Birmingham!"



JASPREET SINGH
MA International Human
Resource Management
- India -

"I wanted to study in the UK and I had a rare course in mind around cosmetics. The Cosmetics Branding and Promotion programme at BCU really appealed to me and so I made an application."

Being at BCU, I've been able to make new friends and the International Welcome Week helped me to ease into university life. Studying within a diverse school gave me the chance to collaborate with other students, doing photoshoots with them and helping me become more confident."

Being based in the heart of Birmingham is convenient as you can travel anywhere by plane, train and bus. Also, we are located near the shopping malls and there are plenty of facilities for students!"

Being a part of BCU is like being part of a family because we all help and support each other."



KAMONOOT KITTITUMMATORN
MA Cosmetics Branding
and Promotion
- Thailand -

ARTS, DESIGN AND MEDIA

OUR FACULTY OF ARTS, DESIGN AND MEDIA INCLUDES ROYAL BIRMINGHAM CONSERVATOIRE FOR MUSIC AND ACTING COURSES, A LEADING PROVIDER OF MEDIA TRAINING, AND EUROPE'S BIGGEST JEWELLERY SCHOOL.

The Faculty incorporates the former Birmingham Institute of Art and Design, an internationally-renowned centre for creative education with a history dating back to 1843.

Our links with industry have included Rolex, Swatch, Saatchi and Saatchi, Goldsmiths, the BBC, The Royal Shakespeare Company, the City of Birmingham Symphony Orchestra, The Brits, Glenn Howells Architects, Sony Computer Entertainment Europe, SEGA and Rockstar North.

Our subject areas include:

- Acting and Theatre
- Architecture and Design
- Art
- English
- Fashion and Textiles
- Jewellery and Silversmithing
- Media and Multimedia Technology
- Music
- Visual Communication.

Facilities include:

- Print, textiles, wood, ceramics and glass workshops
- Photography studios and darkrooms
- Digital print and pattern-making facilities
- Four TV studios
- Green screen MILO studio
- Radio studio and editing suites

- Light and airy art studios
- Gallery and installation space
- Fine art library
- Exhibition space and specialist library
- Digi.lab – a digital lab for prototyping and 3D printing
- Jewellery, silversmithing and computer-aided design equipment
- 10 specialist acting studios complete with temperature regulation and sprung floors
- Five public performance venues – including the 500-seat Bradshaw Hall and the Eastside Jazz Club, situated in our new £57 million Royal Birmingham Conservatoire building
- An experimental black box performance space called the Lab
- Seven industry-standard recording studios and post-production facilities.





ARTS, DESIGN AND MEDIA SCHOOLS

Birmingham School of Architecture and Design

Over 100 years of training Royal Institute of British Architects (RIBA) accredited architects.

School of Visual Communication

Our students have won prestigious national and international competitions, including the Royal Television Awards, Macmillan Children’s Book Awards and Direct Marketing Awards.

School of Fashion and Textiles

Selected graduating BA (Hons) Fashion Design students showcase their designs at Graduate Fashion Week, London, in June each year.

Birmingham School of Media

Strong links with a range of potential employers who offer placements and expertise - from major radio and TV broadcasters to PR agencies and games developers.

New Technology Institute

Providing training in video game design and development through courses backed by the UK video game industry. Undergraduate degrees here can be completed via a two-year fast track route.

Royal Birmingham Conservatoire

Multidisciplinary institution training the musicians, actors, stage managers and applied theatre practitioners of the future. New £57 million state-of-the-art music building opened in 2017.

School of English

Our Institute of Creative and Critical Writing gives students access to industry expertise and masterclasses from writers, publishers and agents.

School of Jewellery

The largest school of jewellery in Europe. Students work with high-profile companies such as Rolex, Georg Jensen (Denmark) and Weston Beamor (Birmingham).

Birmingham School of Art

Birmingham School of Art’s heritage stretches back over 130 years.

ARTS, DESIGN AND MEDIA COURSES

Undergraduate

BA (Hons) Acting
BA (Hons) Applied Theatre (Community and Education)
BA (Hons) Architecture
BA (Hons) Art and Design
BA (Hons) Costume Design and Practice
BA (Hons) Design for Future Living
BA (Hons) Design for Performance: Theatre, Film and Live Events
BA (Hons) Design Management (Level 6 Top-up)
BA (Hons) Digital Marketing
BA (Hons) English
BA (Hons) English and Creative Writing
BA (Hons) English and Drama
BA (Hons) English and Journalism
BA (Hons) English Language and Literature
BA (Hons) English Literature
BA (Hons) Fashion and Beauty Journalism
BA (Hons) Fashion Branding and Communication
BA (Hons) Fashion Business and Promotion
BA (Hons) Fashion Design
BA (Hons) Filmmaking
BA (Hons) Film and Screenwriting
BA (Hons) Film Business and Promotion
BA (Hons) Film Studies
BA (Hons) Fine Art
BA (Hons) Garment Technology
BSc (Hons) Gemmology and Jewellery Studies

BA (Hons) Graphic Communication
BA (Hons) Horology
BA (Hons) Illustration
BA (Hons) Interior Architecture and Design
BA (Hons) International Jewellery Business
BMus (Hons) Jazz
BA (Hons) Jewellery and Objects
HND Jewellery and Silversmithing
BA (Hons) Jewellery and Silversmithing (Level 6 Top-up)
BA (Hons) Journalism
BA (Hons) Landscape Architecture
BA (Hons) Media and Communication
BA (Hons) Media Production
BMus (Hons) Music
BA (Hons) Music Industries
BA (Hons) Music Journalism
BSc (Hons) Music Technology
BA (Hons) Photography
BA (Hons) Product and Furniture Design
BA (Hons) Public Relations and Media
BA (Hons) Sports Journalism
BA (Hons) Stage Management
BA (Hons) Textile Design
BA (Hons) Textile Design: Embroidery
BA (Hons) Textile Design: Fibre Art
BA (Hons) Textile Design: Knit and Weave
BA (Hons) Textile Design: Print and Surface Design
BA (Hons) Textile Design: Retail, Business and Marketing
BA (Hons) Video Game Design and Production
BSc (Hons) Video Game Development

BA (Hons) Video Game Digital Art
BA (Hons) Visual Communication (Graphic Communication – China)
Postgraduate
MA/MFA Acting
Distance Learning: MA Applied Linguistics
MArch Architecture
PgDip Architectural Practice
MA Art and Design: Interdisciplinary Practices
MA Arts and Education Practices
MA Arts and Project Management
MMus/PgDip/PgCert Composition
MMus/PgDip Conducting (Choral or Orchestral or Brass Band)
MA Contemporary Arts China
MA Cosmetics Branding and Promotion
MA Creative Writing
MA Data Journalism
MA Design and Visualisation
Distance Learning: MA Design Management
Distance Learning: MA English Linguistics
MA Event, Festival and Exhibition Management
MMus/PgDip/PgCert Experimental Performance
MA Fashion Design
MA Fashion Management
MA Fashion Promotion
MA Fashion Styling
MA Feature Film Development
MA Film Distribution and Marketing
MA Fine Art

MA/MSc Future Media
MA Global Media Management
MMus/PgDip/PgCert Instrumental Performance
MA Interior Architecture and Design
MMus/PgDip/PgCert Jazz
MA Jewellery and Related Products
GradDip Jewellery and Related Products
MA Landscape Architecture
MA Landscape Architecture with Conversion Year
MA Luxury Brand Management
MA Luxury Jewellery Management
MA Media and Cultural Studies
MA Media Production
MA Multiplatform and Mobile Journalism
MA Musicology
MMus/PgDip/PgCert Music Technology
MMus/PgDip Orchestral Performance (Strings)
MA Product and Furniture Design
AdvPgDip Professional Performance
MA/MFA Professional Voice Practice
MA Public Relations
MA Textile and Surface Design
MA/MSc Video Game Development
MSc Video Game Enterprise, Production and Design
MA Visual Communication
MMus/PgDip/PgCert Vocal Performance



BUSINESS, LAW AND SOCIAL SCIENCES

THE FACULTY OF BUSINESS, LAW AND SOCIAL SCIENCES IS A GLOBALLY ORIENTED FACULTY, DRAWING ON THEORIES AND PRACTICE FROM AROUND THE WORLD TO INFORM OUR LEARNING ENVIRONMENT.

Birmingham City Business School is a leading professionally oriented, international business school focused on connecting you with every aspect of the world of business and innovation. While we have a unique relationship with the extraordinary city we're rooted in, renowned for its industry and commerce, our courses are designed to meet the needs of businesses across the globe.

Birmingham City School of Law has been at the forefront of innovative law teaching for more than 40 years, specialising in social justice and access to justice, with leading academics who are experts in human rights and the death penalty, as well as civil and social issues. Our globally oriented, innovative law degrees are tailor-made for law professionals who want to make an impact on the world.

At Birmingham City School of Social Sciences our mission is to make sense of the world. Our students and academics work together across the disciplines of Criminology,

Psychology and Sociology to develop insights into society. We also apply our research in real world settings on an international scale, working with communities, prisons, hospitals, schools and the police to understand, and influence, social change.

Accreditations include:

- Association of Chartered Certified Accountants (ACCA)
- Chartered Institute of Management Accountants (CIMA)
- Chartered Institute of Personnel and Development (CIPD)
- Chartered Management Institute (CMI)
- Chartered Institute of Marketing (CIM)
- Chartered Institute of Internal Auditors (IIA)
- The British Psychological Society (BPS)
- Solicitors Regulation Authority and Bar Standards Board.

Our subject areas include:

- Accounting, Economics and Finance
- Business, Management and Marketing
- Criminology and Policing
- Law
- Psychology
- Sociology and Black Studies.

Our facilities include:

- Library with access to 62 million print and online resources
- Dedicated IT and student services support
- Simulated courtrooms
- Psychology laboratories
- Internal marketing agency
- City Trading Room.



BUSINESS COURSES

Undergraduate

ACCA
BSc (Hons) Accountancy
BSc (Hons) Accounting and Finance
MAcc Accounting and Finance
BA (Hons) Business
BA (Hons) Business (Marketing)
BA (Hons) Business (Professional Practice)
BSc (Hons) Business Accounting
BA (Hons) Business Administration (Top Up)
BA (Hons) Business Economics
BSc (Hons) Business Finance
MFin Business Finance
BA (Hons) Business Management
BA (Hons) Business Management (Consultancy)
BA (Hons) Business Management (Enterprise)
BA (Hons) Business Management (Professional Practice)
BA (Hons) Business Management (Supply Chain Management)
BA (Hons) Economics
BA (Hons) E-sports Management
BA (Hons) Event, Venue and Experience Management
BSc (Hons) Finance and Investment
MFin Finance and Investment
BA (Hons) Financial Economics
BA (Hons) Global Hospitality Management
BA (Hons) Global Sport Management
BA (Hons) Human Resource Management
BA (Hons) International Business (Top Up)

BA (Hons) International Finance (Top Up)
BA (Hons) International Marketing (Top Up)
BA (Hons) Marketing
BA (Hons) Marketing (Advertising and PR)
BA (Hons) Marketing (Consumer Psychology)
BA (Hons) Marketing (Digital)
BA (Hons) Marketing (Professional Practice)
BA (Hons) Marketing (Retail)

Postgraduate

MSc Accounting and Finance
MSc Accounting and Finance (Master's Stage)
MSc Accounting and Financial Management
MSc Finance and Investment
Distance Learning: MSc Insurance and Risk Management
Distance Learning: MSc Internal Audit Management and Consultancy
MSc International HRM
International MBA
MSc Management and Entrepreneurship
MSc Management and Finance
MSc Management and International Business
MSc Management and Marketing
Distance Learning: MSc Organisation Risk Management

LAW COURSES

Undergraduate

LLB (Hons) Law
LLB (Hons) Law with American Legal Studies
LLB (Hons) Law with Business
LLB (Hons) Law with Criminology

Postgraduate

LLM International Business Law
LLM International Human Rights
LLM International Law
LLM Islamic Business Law
LLM Legal Practice
LPC Legal Practice Course
LLM Professional Law
PgDip in Law

SOCIAL SCIENCES COURSES

Undergraduate

BA (Hons) Black Studies
BA (Hons) Black Studies in Criminal Justice
BA (Hons) Criminology
BA (Hons) Criminology and Security Studies
BA (Hons) Criminology, Policing and Investigation
BSc (Hons) Counselling Psychology
BSc (Hons) Professional Policing
BSc (Hons) Psychology
BSc (Hons) Psychology with Business
BSc (Hons) Psychology with Criminology
BSc (Hons) Psychology with Marketing
BSc (Hons) Psychology with Sociology
BA (Hons) Sociology
BA (Hons) Sociology and Criminology

Postgraduate

MA Black Studies
MA Criminology
MSc Forensic Psychology
MSc Health Psychology
Distance Learning: MSc Psychology
MA Security Studies



COMPUTING, ENGINEERING AND THE BUILT ENVIRONMENT

THE FACULTY OF COMPUTING, ENGINEERING AND THE BUILT ENVIRONMENT
COMPRISES TWO SCHOOLS WITH A SHARED VISION TO CREATE A POWERFUL
CENTRE OF TECHNOLOGICAL EXCELLENCE AND INNOVATION, AND TO EQUIP
YOU WITH THE SKILLS YOU NEED TO SUCCEED IN THE WORKPLACE
AND CONTRIBUTE TO SOCIETY.

We have excellent resources including state-of-the-art laboratories and engineering workshops, world-class film and television studios, and the latest computing and digital technologies, all located in a spectacular environment provided by the Millennium Point building.

Our courses are designed to develop highly employable graduates and we have worked closely with our strong employer network to ensure our courses meet their demands and expectations. We work with some of the world's foremost employers, including the BBC, Microsoft, Cisco, Jaguar Land Rover and Wilmott Dixon.

Accreditations include:

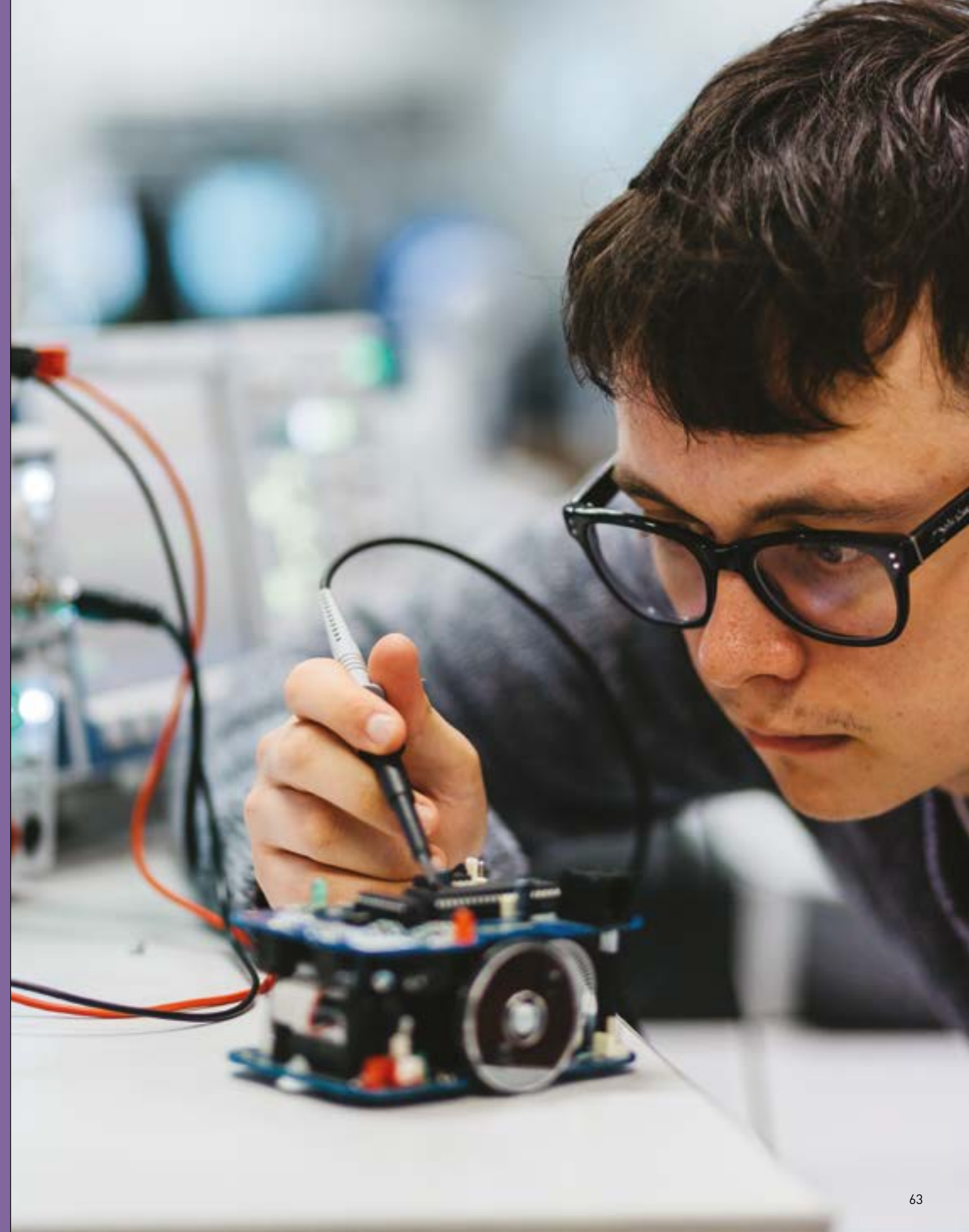
- The Chartered Institute of Building (CIOB)
- Royal Institution of Chartered Surveyors (RICS)
- The Institution of Engineering and Technology (IET)
- The Institute of Mechanical Engineering (IMechE).

Our subject areas include:

- Built Environment
- Computing
- Digital Technology
- Engineering.

Our facilities include:

- Cisco networking labs
- Industry-standard computer forensics lab
- Specialist games lab
- Hydraulics lab
- Computer Aided Design lab
- Flexible project space with makers' area.



COMPUTING, ENGINEERING AND THE BUILT ENVIRONMENT COURSES

Undergraduate

BSc (Hons) Architectural Technology
BEng/MEng (Hons) Automotive Engineering
BSc (Hons) Building Surveying
BSc (Hons) Business Information Technology
BEng/MEng (Hons) Civil Engineering
BSc (Hons)/MSci Computer and Data Science
BSc (Hons)/MSci Computer Forensics
BSc (Hons)/MSci Computer Games Technology
BSc (Hons)/MSci Computer Networks
BSc (Hons)/MSci Computer Networks and Security
BSc (Hons)/MSci Computer Science
BSc (Hons) Computing (One Year Top Up)
BSc (Hons)/MSci Computing and Information Technology
BSc (Hons) Construction Management
BSc (Hons)/MSci Cyber Security
BSc (Hons) Digital Media Computing
BSc (Hons) Digital Media Technology
BEng/MEng (Hons) Electronic Engineering
BSc (Hons) Film Production Technology
BSc (Hons) Visual Effects
BEng/MEng (Hons) Manufacturing Engineering
BEng/MEng (Hons) Mechanical Engineering
BSc (Hons) Music Technology
BSc (Hons)/MPlan Property, Development and Planning
BSc (Hons) Quantity Surveying
BSc (Hons) Real Estate
BSc (Hons) Sound Engineering and Production

Postgraduate

MSc Advanced Computer Science
MSc Automotive Engineering
MSc Big Data Analytics
MSc Building Surveying with Facilities Management
MSc Business Intelligence
MSc Construction Project Management
MSc Cyber Security
MSc Data Networks and Security
MSc Enterprise Systems Management
Distance Learning: MSc International Logistics and Supply Chain Management
Distance Learning: MSc International Project Management
MSc Logistics and Supply Chain Management
MSc Mechanical Engineering
MA Planning Built Environments
MSc Project Management
MSc Quantity Surveying
MSc Real Estate Management
MSc User Experience Design



HEALTH, EDUCATION AND LIFE SCIENCES

THE FACULTY OF HEALTH, EDUCATION AND LIFE SCIENCES HAS A NATIONAL AND GROWING INTERNATIONAL REPUTATION FOR PIONEERING APPROACHES TO LEARNING AND TEACHING, THROUGH THE CREATION OF CUTTING-EDGE SIMULATED EXPERIENCES, AND HAS CONSISTENTLY ACHIEVED “EXCELLENT” RATINGS IN NATIONAL QUALITY AUDITS.

We have a proven record for graduate employment, with 99.4% of students in graduate level employment or further study six months after graduating (DLHE 2016/17).

We are committed to teaching quality and have been awarded the Skills for Health Quality Mark, in recognition of the high standard of learning and training delivered on our health courses.

The School of Health Sciences was established in 2014 to accommodate our growing Biomedical Science and Sports courses portfolio. The School has a strong focus on practical experience and application of theory to ensure that you are ready for employment on graduation.

The School of Nursing and Midwifery provides a dynamic and forward-thinking learning environment, supported by more than 100 academic staff who are qualified nurses and experts in their fields. Four lecturers in the School have achieved the title of 'Queen's Nurse' from the Queen's Nursing Institute in recognition of their dedication to a high standard of patient care.

We have a good history of engagement with overseas ministries, academic institutions and professional bodies to transform local healthcare and education practices. Activities include collaborative research and delivery, student progression and mobility of staff and students.

Our facilities include:

- Mock operating theatre and hospital wards
- Specialist drama, art and music rooms
- Physiology and biomechanics laboratory
- A radiography imaging suite
- Sports therapy clinic room
- Specialist speech and language therapy clinic room
- Digitally enabled bioscience laboratory.



HEALTH, EDUCATION AND LIFE SCIENCES COURSES

Undergraduate

BEng (Hons)/MEng Integrated Master's Biomedical Engineering
BSc (Hons) Biomedical Sciences
BA (Hons) Early Childhood Studies
BA (Hons) Early Childhood Studies (1 Year Top Up)
BA (Hons) Education Studies
BSc (Hons) Food and Nutrition
BSc (Hons) Health Studies (Public Health)
BSc (Hons) Nursing*
BSc (Hons) Physical Education and School Sport
BA (Hons) Primary Education
BSc (Hons) Professional Practice (Healthcare for International Students)
BSc (Hons) Secondary Science (Biology) with QTS
BSc (Hons) Secondary Computing with QTS
BA (Hons) Secondary Physical Education with QTS
BSc (Hons) Social Work
BSc (Hons) Sport and Exercise Nutrition
BSc (Hons) Sport and Exercise Science
BA (Hons) Working with Children, Young People and Families

*subject to approval

Postgraduate

Distance Learning: MSc/PgDip/PgCert Advancing Diabetes Care
MSc Dietetics
MA Education (International Education)
MSc Medical Engineering*
MSc Physiotherapy
MSc/PgDip/PgCert Professional Practice
MSc/PgDip/PgCert Public Health
MSc Social Work
MSc/PgDip/PgCert Transforming and Leading in Health Care



THE APPLICATION PROCESS

CHECK OUT OUR VISA GUIDANCE VIDEO



1 SELECT YOUR COURSE

2 CHECK ELIGIBILITY

If you don't meet entry requirements you may be able to study a foundation year with us or at Birmingham City University International College (BCUIC).

3 APPLY

Online, on paper, via a representative or through UCAS.

4 RECEIVE YOUR OFFER LETTER

Your offer letter will provide details about: course offered, tuition fee, scholarship awarded, course start dates and other relevant information.

5 ACCEPT AND PAY YOUR DEPOSIT*

Accept and pay your deposit to confirm your place at Birmingham City University.

6 RECEIVE YOUR CAS LETTER*

We will email you a Confirmation of Acceptance of Studies (CAS) number in a CAS statement.

7 APPLY FOR YOUR VISA*

Once you have received your CAS letter, you can then apply for your visa. You can find guidance on applying for your visa: www.bcu.ac.uk/visa



For more information on the application process visit:

www.bcu.ac.uk/international/application-process

*Only applicable to non-EU students

HOW TO APPLY



THERE ARE FOUR EASY WAYS THAT YOU CAN SEND AN APPLICATION TO US:



ONLINE

Apply early and avoid the August rush. Select your course of choice on the website and click "apply now".



PAPER APPLICATION

Request an application form from international.enquiries@bcu.ac.uk and return by email with your scanned documents.



IN-COUNTRY REPRESENTATIVES

Use the guidance and assistance of Birmingham City University reps in your country. You can find them listed at: www.bcu.ac.uk/your-country



UCAS

Undergraduate students can apply through UCAS. The University's UCAS code is **B25 BCITY**.

For support on how to apply, you can contact us on +44 121 331 5389 or email international.enquiries@bcu.ac.uk.

TAKE A LOOK AT OUR
ENGLISH LANGUAGE
REQUIREMENTS VIDEO



 **6.0**

You'll need a minimum 6.0 IELTS score to study here. To achieve 6.0, you can take our pre-sessional English courses.

ENTRY REQUIREMENTS

Once you have found the course you would like to apply for, it's important that you have achieved, or are aiming to achieve, the entry requirements for that course. Our website is the best source for this information but as a general rule, please see the table on the right:

For your country entry requirements, please visit: www.bcu.ac.uk/international/countries

Level	Requirement
Foundation	You should be educated to a standard comparable to British A Level standard but may have achieved lower marks
BCUIC Foundation	An average of five GCSE passes (grades A* to E/2 to 9), with at least three grade C/4 results
BCUIC Pre-Master's	Minimum of a UK Higher National Diploma (HND) or UK Diploma in Higher Education (DipHE), and a minimum overall grade point average (GPA) of 2.3 on the 4.0 scale
Undergraduate	You should be educated to a standard comparable to British A Level standard
Postgraduate	You should normally hold a qualification which is comparable to a British Bachelor's (Honours) degree
PhD	You should have a Master's degree in an appropriate discipline
MPhil	You should normally hold a First or Second Class Honours undergraduate degree or equivalent

ENGLISH REQUIREMENTS

To be successful while studying at Birmingham City University, you'll need to have a good level of English. The majority of our courses require a minimum IELTS score of 6.0 overall (with no band less than 5.5).

If IELTS isn't your main English language qualification provider, we also accept a range of other qualifications as evidence of your English language abilities. Please visit our website to find out if we accept your local qualification.

PRE-SESSIONAL ENGLISH COURSES

Pre-sessional English courses are for international and EU students whose first language is not English, and who have a conditional offer to study for a degree course.

The courses are designed to equip international students with the academic skills they need to succeed during foundation, undergraduate and postgraduate courses and to raise their English language level to meet the entry requirements of their main programmes.

Please note that applicants will need an IELTS from a UKVI approved test centre in order to do a pre-sessional course.

We have three programmes to offer students:

- 16 weeks
- 10 weeks
- 6 weeks.

www.bcu.ac.uk/international/english

NEED TO IMPROVE YOUR ENGLISH?

You need an extra score of	Available course
0.5	6-week pre-sessional English
1.0	10-week pre-sessional English
1.5	16-week pre-sessional English or one-year Foundation Certificate in English for Academic Purposes (FCEAP)

If you have 4.0, you can take our one-year Foundation Certificate in English for Academic Purposes which has a 100% pass rate! www.bcu.ac.uk/fceap



FOUNDATION PROGRAMMES

YOUR DIRECT PATH TO UNIVERSITY

BIRMINGHAM CITY UNIVERSITY FOUNDATION PROGRAMMES

WE OFFER A RANGE OF FOUNDATION PROGRAMMES HERE AT BIRMINGHAM CITY UNIVERSITY.

If you have been educated to a standard comparable to British A Level standard but your qualifications are slightly below those required for direct entry onto a Bachelor's degree, a foundation programme may offer an alternative route to achieve your goals.

Foundation programmes are for school-leavers who have studied a non-British curriculum but wish to pursue a degree at a UK university. The foundation course acts as a bridge between your current qualifications and our entry requirements and is designed to plug academic gaps, improve your English and familiarise you with UK life and culture in preparation for university.

BIRMINGHAM CITY UNIVERSITY INTERNATIONAL COLLEGE (BCUIC) FOUNDATION PROGRAMMES

For students who are unable to meet Birmingham City University's foundation entry requirements, or for those who would benefit from additional student support and more one-to-one interaction with tutors, Birmingham City University International College (BCUIC) also offers a range of specifically tailored foundation programmes aiming to prepare students for university-level study.

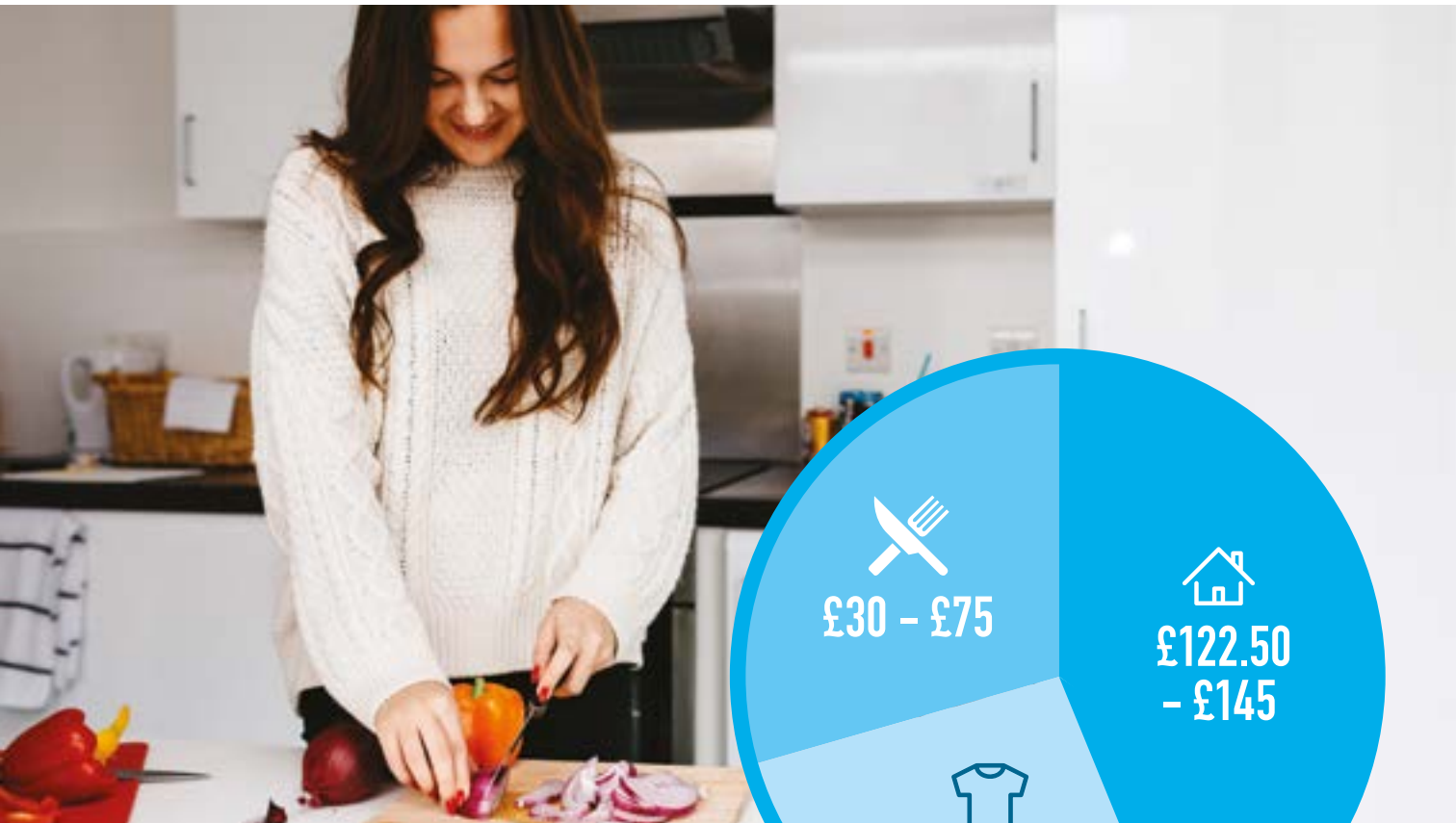
Teaching at BCUIC is delivered in a dedicated area of the University's campus, helping students to enjoy a supported transition into mainstream university life. BCUIC also offers additional entry points with its First Year and Pre-Master's programmes, plus the added benefit of flexibility with three intake options per year (September, January or May).



We offer foundation programmes in the following subject areas:

- Accountancy and Finance
- Architecture and Design
- Art, Design and Visual Communication
- Built Environment
- Business
- Education
- Computing and Technology
- Engineering
- Health Sciences
- Law
- Media and Multimedia Technology
- Sport and Physical Activity.

For the latest information please visit:
www.bcu.ac.uk/international/foundation



EU students pay the same as home students

TUITION FEES

YOUR ANNUAL TUITION FEES COVER EVERYDAY TUITION, EXAMINATION COSTS AND MEMBERSHIP OF THE STUDENTS' UNION. HALF OF YOUR FEES ARE PAID AT ENROLMENT, AND THE REST CAN BE PAID IN INSTALMENTS, PROVIDED YOU HAVE A UK BANK ACCOUNT.

Programme level	Non-EU students
Foundation	£12,800
Foundation (BCUIC)	£8,750
Pre-Master's (BCUIC)	£8,750
Undergraduate	£12,800
Postgraduate	From £12,800*

Some courses have a different tuition fee structure. Please check our website for the most up-to-date fees.

*Course fees vary per postgraduate course.

Find out more information at www.bcu.ac.uk/international-fees.

LIVING COSTS

IF YOU'RE FROM OUTSIDE THE EU, YOU'LL NEED TO HAVE SUFFICIENT FUNDS TO STUDY IN THE UK. YOU WILL NEED TO ALLOW AT LEAST £1,015 PER MONTH, OR £9,135 FOR THE FIRST NINE MONTHS OF YOUR STUDIES.**

**As per UKVI guidance, please note that this figure might change.

You can expect to pay the following each week:

	Description	Cost
Accommodation	Private furnished room, shared kitchen, gas, water, electricity, wi-fi	£122.50 - £145
Food and drink	Weekly shopping, dining out, social nights	£30 - £75
Additional costs	Stationery, printing, clothing, cinema etc.	£5 - £50
Weekly total		£157.50 - £270***

***These costs will vary depending on your personal circumstances.

Find out more information at www.bcu.ac.uk/international-fees.



£1.2 MILLION
available in scholarships



We work with employment agencies within Birmingham to list the opportunities available in the city. This allows you to work while you study with us, fitting the job around your course commitments.

SCHOLARSHIPS

WE UNDERSTAND THAT YOUR ACADEMIC CAREER CAN BE A COSTLY ONE; THEREFORE WE WOULD LIKE TO HELP YOU TO FIND FUNDING FOR YOUR STUDIES AT BIRMINGHAM CITY UNIVERSITY AND HAVE OVER £1.2 MILLION AVAILABLE IN SCHOLARSHIPS.

BCU Academic Excellence Scholarship
Depending on your prior education background, you may be entitled to a scholarship ranging from £1,000 up to £2,000.

External scholarship providers
There are a number of providers who offer financial support for your journey to studying in the UK.

www.bcu.ac.uk/international/scholarships

Non-EU students only

Prompt Payment Bursary*
If you pay your tuition fees in full before travelling to, or during your enrolment in the UK, you will be entitled to a £300 prompt payment discount. This discount applies to the amount you owe after any scholarships or bursaries have been deducted from your tuition fee.

*Please note there are exceptions to the scholarships we offer and who is eligible for the Prompt Payment Bursary.

EARN WHILE YOU LEARN

‘OPPORTUNITY: STUDENT JOBS ON CAMPUS’ ENSURES THAT OUR STUDENTS ARE GIVEN THE CHANCE TO FILL MANY PART-TIME TEMPORARY POSITIONS WITHIN THE UNIVERSITY.

By taking part in the scheme, you will gain valuable experiences and employability skills, enhancing your prospects in the job market. It will also allow you to become more involved in University life by delivering, leading and supporting many aspects of the learning experience, from administration to research and mentoring roles.

Tier 4 students who are sponsored to study a full-time course by a Tier 4 sponsor are allowed to work up to 20 hours a week in term time if you are studying for a qualification at degree level.

For more information please visit:
www.bcu.ac.uk/work

Example roles include:

- Administration assistants
- Laboratory assistants
- Marketing assistants
- Student ambassadors
- Student academic mentors
- Copywriting
- Magazine editor
- Technical assistant
- Web developer
- Video and post-production assistant
- Database assistant
- Disability assistant
- Receptionist
- Assistant PA.

www.bcu.ac.uk/student-employment

YOUR ARRIVAL



MOVING COUNTRIES IS A HUGE DECISION AND WE WANT TO MAKE IT AS EASY AND SMOOTH AS POSSIBLE. OUR INTERNATIONAL TEAM WILL HELP YOU EACH STEP OF THE WAY AND IT DOESN'T STOP WHEN YOU ARRIVE, AS WE HAVE AN EXTENSIVE SUPPORT SYSTEM IN PLACE TO HELP YOU WITH ANY ISSUES YOU MAY HAVE.

MEET AND GREET

We'll meet you at Birmingham Airport and make sure you're dropped off at your student accommodation. Visit www.bcu.ac.uk/meet-and-greet for more information.

VISAS AND IMMIGRATION

The International Student Visa Advisers provide advice on UK immigration law, including the impact of academic decisions on your visa, replacing lost visas and extending student visas. Please email batch@bcu.ac.uk for more information.

WELCOMING YOU

During September we hold a week of welcome activities especially for new international students. You will enrol on your course, get information about the University, meet staff, open a bank account, register with the police and with a doctor. It's also an opportunity to attend social events, familiarise yourself with Birmingham, and make the city your home away from home.

WATCH JASPREET'S VIDEO, AS HE SHARES HIS TIPS FOR SETTLING INTO UK LIFE.



JOBS AND CAREERS

We can help you get a National Insurance number, look for a part-time job and improve your CV. Our student employment agency, OpporUNlty, allows you to apply for part-time jobs at the University, subject to any visa restrictions. Our Research, Innovation and Enterprise department will assist you if you aim to apply for a Start-up visa.

STUDENTS' UNION, SPORTS AND SOCIETIES

When you become a Birmingham City University student you automatically become a member of our Students' Union, and have access to a wide range of fantastic services and facilities. The International Student Association will help you get acquainted with student and city life. From something as simple as having a meal at one of the city's many restaurants, to a day trip to a different location, we're here to create a welcoming social environment for our students.