



BIRMINGHAM CITY  
University

I AM  
BCU

Postgraduate Guide  
2020/21


# WELCOME

**I'D LIKE TO GIVE YOU A WARM WELCOME TO BIRMINGHAM CITY UNIVERSITY. I AM IMMENSELY PROUD TO BE THE CHANCELLOR OF THIS VIBRANT AND DIVERSE INSTITUTION.**

Our University offers some pretty special opportunities for postgraduate students. Whether you want to pursue a passion, take the next step in your career or even change direction completely, we've got what you need to thrive – the expert staff, the fantastic facilities and the location right in the heart of the flourishing city of Birmingham.

Come and see for yourself what's happening at the University and across the city. I did, and that's why I was thrilled to accept this amazing role of Chancellor at BCU.

All the very best with whatever you do next.



Sir Lenny Henry,  
Chancellor, Birmingham City University





# FIND YOUR FUTURE HERE

A postgraduate qualification is an opportunity to be introduced to new ideas, to gain expertise in your specialist subject and to give your career a real edge.

Our innovative teaching methods, ground-breaking research and collaborations with industry are backed by around 50 of our courses having professional accreditation – an approach that is constantly broadening the thinking of our staff, students and associates.

By studying here, you will have the opportunity to gain the knowledge and

attributes that today's employers constantly crave. Through our close relationships with businesses and organisations in Birmingham, you'll gain extensive experience and skills. It's no surprise that within six months of graduating, 96% of our postgraduate students have progressed into employment or further study\*.

We hope to welcome you soon, but if you have any queries about postgraduate study in the meantime, please don't hesitate to get in touch with us.

\* Destination of Leavers from Higher Education survey 2016/17

# WHY STUDY WITH US?

## HERE ARE 10 REASONS TO CHOOSE BIRMINGHAM CITY UNIVERSITY.

### 1 POSTGRADUATE EMPLOYMENT RATES

Our commitment to developing our students with the skills and knowledge they need means that 96% of our postgraduates are in employment or further study within six months.

(Destination of Leavers from Higher Education survey 2016/17)

### 2 A GLOBAL CITY

Study with us and you will be located at the heart of the dynamic city of Birmingham – with all the social and employment possibilities that brings.

### 3 LEARN FROM THE BEST

Our teaching staff come from and maintain links with industry, and ten are National Teaching Fellows – the most prestigious award for excellence in university teaching and learning.

### 4 PRACTICE-BASED RESEARCH

Almost 90% of our research was judged to have delivered outstanding, or, very considerable, external impact.

(Research Excellence Framework 2014)

### 5 INVESTING IN YOUR FUTURE

We have invested £340 million in industry standard, state-of-the-art facilities to ensure you have the best possible environment for practice-based learning.

### 6 AMAZING FACILITIES

From four TV and six radio studios to a mock hospital ward and city trading room, we are committed to providing the best resources for our students.

### 7 CHOICE FOR ALL

With over 120 postgraduate and professional development courses to choose from, there's choice to think outside the box and arm yourself with a qualification that suits your interests and ambitions.

### 8 SUPPORT AND ADVICE

Throughout your time with us, you'll have access to our full range of student support services including career advice, mentoring and professional development events.

### 9 ENHANCED EARNING POTENTIAL

Someone with a Master's degree or PhD earns £6,000 more per year, or £240,000 over a 40-year working life, than someone with just a degree.

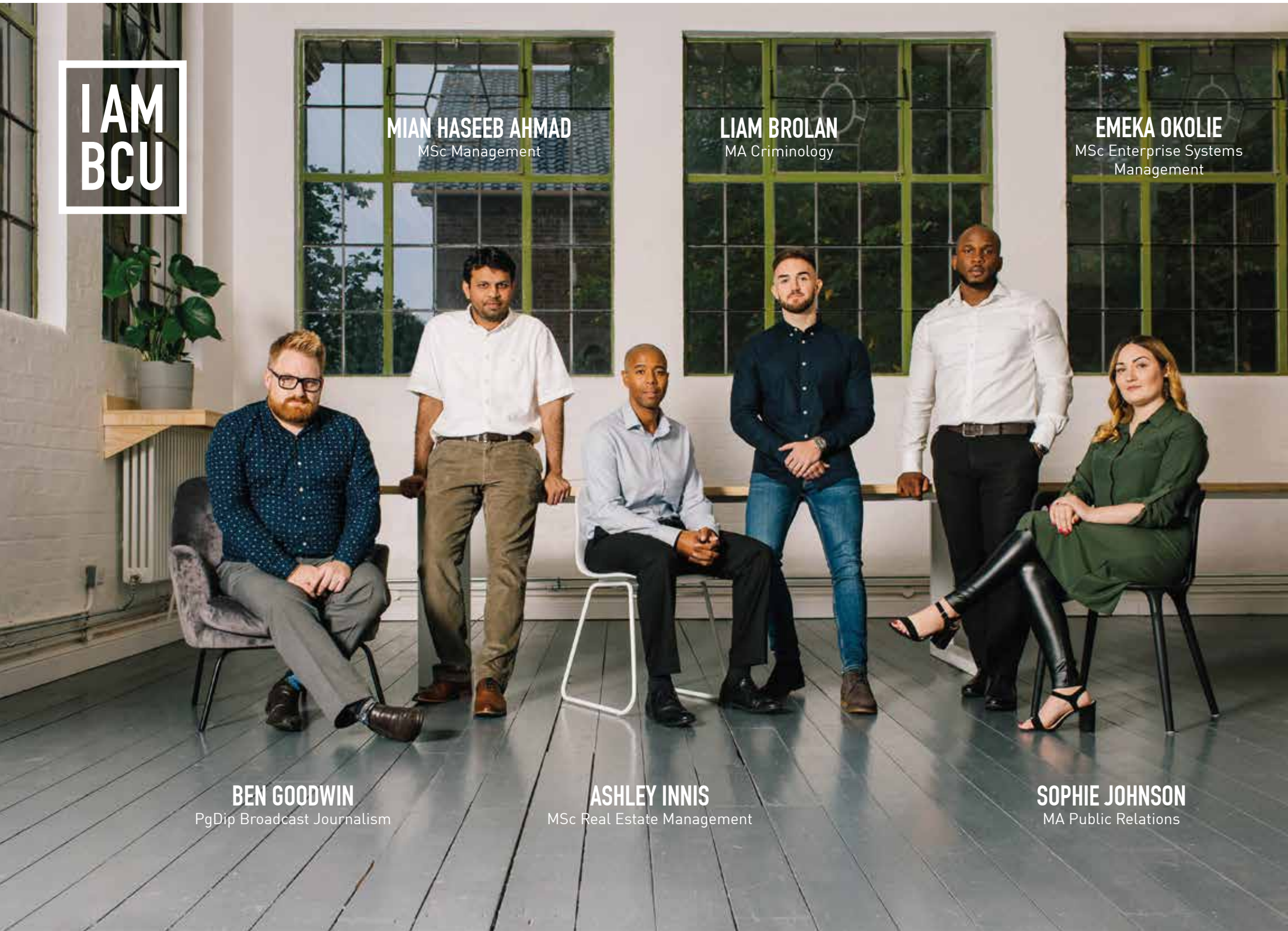
(Graduate Labour Market Statistics 2018, Department for Education)

### 10 FINANCIAL SUPPORT

In 2019, loans of up to £10,906 were available to support with fees and living costs for postgraduate students. This amount grows each year in line with inflation.

**EVERYONE PICTURED BELOW IS A POSTGRADUATE STUDENT OR ALUMNI OF BIRMINGHAM CITY UNIVERSITY. HERE ARE SOME OF THEIR SUCCESS STORIES.**

To read more stories, visit [bcu.ac.uk/pg-i-am-bcu](http://bcu.ac.uk/pg-i-am-bcu)



**MIAN HASEEB AHMAD**  
MSc Management

**LIAM BROLAN**  
MA Criminology

**EMEKA OKOLIE**  
MSc Enterprise Systems  
Management

**BEN GOODWIN**  
PgDip Broadcast Journalism

**ASHLEY INNIS**  
MSc Real Estate Management

**SOPHIE JOHNSON**  
MA Public Relations

**BEN GOODWIN**

PgDip Broadcast Journalism  
Communications Manager, HS2 Ltd

With an ambition to work in the media, Ben came to BCU to undertake a postgraduate qualification, where he learned many of the practical skills he needed to work in journalism. The skills were also transferable, and he is now putting them into practice in a slightly different role, as a Communications Manager for the HS2 rail project.

*"At PG level, there is much more one-on-one time with the academic staff, so you can really hone certain skills or work through a problem in much more detail. Plus, I found there was a greater sense of freedom, in terms of exploring areas of personal interest. I was given more time to develop original ideas, yet, at the same time, I felt that I was not just gaining an academic qualification, but I was working towards gaining an exciting career for life."*

**ASHLEY INNIS**

MSc Real Estate Management  
Project Manager, Birmingham City Council

Ashley has played a key role in many of the biggest developments taking place in Birmingham in recent years, including New Street station, Grand Central and the redevelopment of Paradise Circus. Prior to his current role, he decided to undertake further study with an MSc in Real Estate Management which he is studying on a part-time basis alongside his work.

*"Over the course of my most recent roles, I have been involved in the development of a number of major regeneration schemes and projects so have a really good practical understanding of what is required and I wanted to supplement this with a theoretical grounding, so what better place to continue my studies than the place it all started at, BCU! I'm a Brummie, I've lived and worked here all of my life, and so I'm proud to attend my local university."*

**PAIGE JONES**  
Cardiac Care (Professional Practice)  
Operating Department Practitioner

Paige is using postgraduate study at BCU to continue her professional development as an Operating Department Practitioner, with a qualification which will allow her to progress in her role and pass knowledge on to other members of her team. Her studies will also open up opportunities for her to work in other areas of the hospital, such as accident and emergency or intensive care.

*“Courses at BCU allow you to further develop the skills you have graduated with, to allow further progression to higher and more specialised roles in healthcare. All three modules are very much related to my everyday role as an Anaesthetic ODP in the cardiac theatres and I have already been able to apply some of my knowledge and understanding gained on this course to my clinical practice.”*



# OUR RESEARCH

**RESEARCH IS A CORE COMPONENT OF WHAT WE DO AT BIRMINGHAM CITY UNIVERSITY. OUR RESEARCHERS ARE COMMITTED TO DISCOVERING NEW KNOWLEDGE AND DELIVERING REAL BENEFITS TO CULTURE, INDUSTRY, SOCIETY AND THE ENVIRONMENT.**

Postgraduate research students are members of our wider research community of academics and research staff, research collaborators and research users, who work together to create and apply new knowledge and understanding.

Studying for a research degree allows you to explore your chosen topic in greater depth, guided by expert supervisors within a supportive environment. In addition to analytical and research skills, you will develop transferable professional skills which are highly valued by employers, such as time management.

Our researchers work across disciplines and with collaborators locally, nationally and

internationally to produce research of high impact to society, the environment, culture and the economy. We have launched the UK's first Centre for Brexit Studies, researching all aspects of the UK's vote to leave the EU, including the impact on the British and European economies.

Our Research Excellence Framework (REF) 2014 results demonstrate the public benefit of our research to society and the economy, with 90% deemed to have either 'outstanding' or 'very considerable' impact.

To find out more about research degrees, please visit our website at [www.bcu.ac.uk/research](http://www.bcu.ac.uk/research).

**ABED AHMED**  
PGCE Mathematics (School Direct)  
Mathematics teacher

Abed teaches secondary school mathematics, an achievement made all the more impressive by the fact that he has had a stammer since the age of four. Despite the fact that teaching requires a lot of speaking, Abed has overcome his difficulties and also set up his own stammer support sessions at school, to help young people in the same position. His achievements have not gone unnoticed, and he was named 'New Teacher of the Year' at the TES Schools Awards 2018.

*“I decided to study at BCU because it had a lot of links with schools I wanted to work in and was always well-known to produce great teachers. Also, my subject mentor Don Newtown is known around the country and he was the only person I wanted to work for. Staff were incredibly helpful and they offered sessions for me to improve my academic writing. I learned how to plan lessons, manage behaviour and thrive in my career.”*



# FINANCIAL SUPPORT

**IT'S IMPORTANT TO BE AWARE OF THE FUNDING AVAILABLE TO YOU WHEN YOU CHOOSE TO DO POSTGRADUATE STUDY, TO ENSURE YOU HAVE ENOUGH MONEY FOR COURSE FEES, STUDY MATERIALS AND LIVING COSTS.**

## TUITION FEES

Each course web page includes the tuition fees for that course. Some courses involve intensive laboratory, clinical or fieldwork so may have higher fees. International students (from outside of the UK/EU) will be charged fees at the international rate. Part-time fees normally do not apply to international students as your student visa requires you to study full-time. Visit the course pages to find out about tuition fees and costs at [www.bcu.ac.uk/pgcourses](http://www.bcu.ac.uk/pgcourses).

## FUNDING YOUR POSTGRADUATE DEGREE

There are many areas of funding and many different bursaries to apply for, but there is no shortage of competition for them. When it comes to funding, it's important to start early – as soon as you've found a place on a course, funding should be your main priority. Your starting point should be contacting the University, who will be able to tell you about any funding available.

## POSTGRADUATE LOANS

The UK Government offers loans to eligible students starting a taught or research Master's degree. The maximum loan for students who ordinarily live in England or Wales was £10,906 in 2019. This amount grows with inflation each year. A package of support is also available to students who live in Scotland or Northern Ireland, and to eligible students from the EU. Full details, including eligibility and repayment, can be found at [www.gov.uk/postgraduate-loan](http://www.gov.uk/postgraduate-loan).

## SCHOLARSHIPS AND BURSARIES

Scholarships and bursaries are provided by a range of organisations, including universities, private companies, charities and the government. Some are designed to pay recipients' tuition fees; others help to cover living costs. There are many different schemes to apply for, but some may be competitive. Visit [www.prospects.ac.uk](http://www.prospects.ac.uk) for more information.

## RESEARCH FUNDING

The UK Government also offers postgraduate doctoral loans of up to £25,000 for students starting a research degree in the UK. Find out more via [www.gov.uk/doctoral-loan](http://www.gov.uk/doctoral-loan). Research funding is awarded on a competitive basis, using independent expert peer review. Potential applicants should refer specific questions about the applications process to the relevant Research Council. Discover more at [www.ukri.org/funding](http://www.ukri.org/funding).

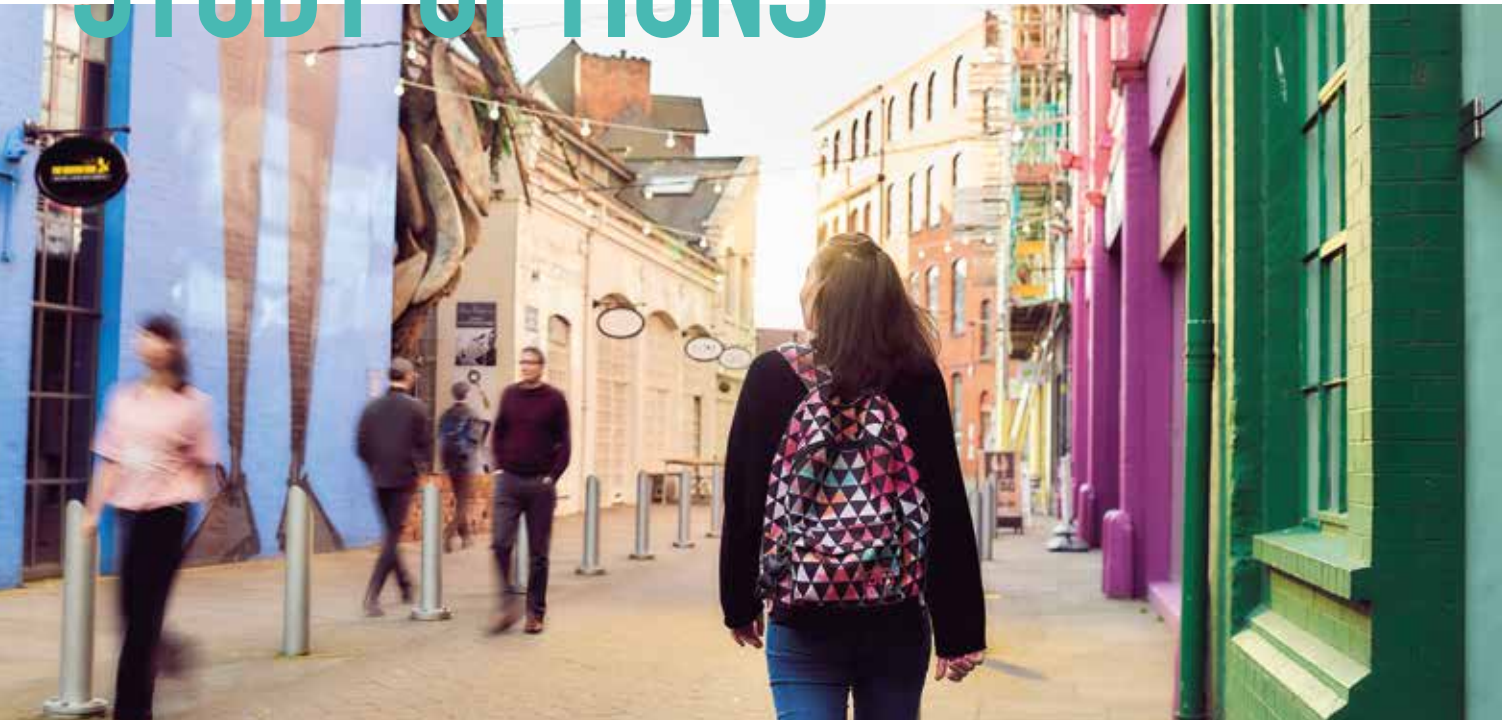
## PROFESSIONAL AND CAREER DEVELOPMENT LOANS

These are bank loans to help cover your fees and living expenses, and range from £300 to £10,000. Check out [www.gov.uk/career-development-loans](http://www.gov.uk/career-development-loans) for more information.

### OTHER SOURCES OF FUNDING MAY INCLUDE:

- PGCE student funding
- Employer support
- Disabled Students Allowance
- Trusts and charities
- Crowdfunding
- Working while studying

# FLEXIBLE STUDY OPTIONS



## FLEXIBLE STUDY OPTIONS

Here at Birmingham City University, we understand that sometimes life gets in the way. That's why we offer not only full-time study, but a host of flexible study options including part-time and online.

## ONLINE

By offering you a range of online courses, it means that you can study for your postgraduate degree in your own time. You will learn through tutor-led webinars, online activities and a range of internet resources, including e-library learning sources. Emphasis is placed on student-centred guided, self-directed learning, with a progressively increasing independence of approach, thought and process.

## PART-TIME

We offer a range of part-time postgraduate, professional and short courses across many subject areas. So whether you want to enhance your career prospects, update your professional skills or simply study for your own enjoyment, we can help you realise your potential with a range of courses that can fit around your lifestyle.

## WORK-LIFE BALANCE

Tailored carefully to the needs of part-time or online students, study options can include evening and day release, yet offer exactly the same levels of student support and facilities. Crucially, part-time study allows you to balance your studies with your life. Flexible study fits in around family and work commitments – and your employer may even contribute towards your tuition fees.

# THE HEART OF THE CITY

**BY CHOOSING BIRMINGHAM CITY UNIVERSITY, YOU WILL BE STUDYING IN A VIBRANT AND DIVERSE CITY, WITH PLENTY OF OPPORTUNITIES TO PROGRESS YOUR EDUCATION AND CAREER. THE UNIVERSITY HAS PLAYED A KEY PART IN THE CITY'S TRANSFORMATION OVER RECENT YEARS, WITH SEVERAL MORE EXCITING PROJECTS IN THE PIPELINE.**

## STEAMHOUSE

STEAMhouse is our fantastic business development centre which aims to encourage collaboration between the science, technology, engineering, arts and mathematics (STEAM) sectors. The first phase of the project features fabrication facilities for use by businesses and individuals, workshops, networking events and access to grants for small businesses.

## BELMONT WORKS

The University has announced plans to transform the historic 120-year-old Belmont Works, next to our City Centre Campus, into a £60 million innovation centre for businesses, artists and academics to collaborate, as the second phase of our STEAMhouse initiative. The overhaul will see the restoration of the Grade A listed building which has stood derelict since being gutted by a fire in 2007.

## COMMONWEALTH GAMES

The University will be at the very heart of legacy plans for the Commonwealth Games, being hosted by Birmingham in 2022. It has agreed a deal with Birmingham City Council for the redeveloped Alexander Stadium in Perry Barr to provide a new home for our sports courses after the event, giving our students access to world-class professional facilities.



**FIND OUT MORE**

[www.steamhouse.org.uk](http://www.steamhouse.org.uk)

# ARTS, DESIGN AND MEDIA



Our Faculty of Arts, Design and Media includes a specialist music and acting conservatoire, a leading provider of media training, and Europe's biggest jewellery school.

The faculty is internationally renowned for creative education with a history dating back to 1843. Our links with industry include Rolex, Swatch, Saatchi and Saatchi, Goldsmith, the BBC, The Brits, Axis Design Architects Ltd, Sony Computer Entertainment Europe, SEGA and Rockstar North.

## ACTING AND VOICE

### MA/MFA/PgDip Acting

Full-time. September 2020.  
[www.bcu.ac.uk/acting-ma](http://www.bcu.ac.uk/acting-ma)

### MA/MFA/PgDip Professional Voice Practice

Full-time or part-time (MFA full-time only).  
September 2020.  
[www.bcu.ac.uk/professional-voice-practice](http://www.bcu.ac.uk/professional-voice-practice)

## ARCHITECTURE AND DESIGN

### PgDip Architectural Practice (RIBA Part 3)

Part-time. September 2020 or February 2021.  
[www.bcu.ac.uk/architecture-part3](http://www.bcu.ac.uk/architecture-part3)

### MArch Architecture (RIBA Part 2)

Full-time or part-time. September 2020.  
[www.bcu.ac.uk/architecture-march](http://www.bcu.ac.uk/architecture-march)

### MA/PgDip/PgCert Conservation of the Historic Environment

Part-time. September 2020.  
[www.bcu.ac.uk/conservation-ma-pgdip](http://www.bcu.ac.uk/conservation-ma-pgdip)

### MA Design and Visualisation

Full-time. September 2020.  
[www.bcu.ac.uk/design-visualisation](http://www.bcu.ac.uk/design-visualisation)

### MA Design Management

Full-time, part-time or work-based learning.  
September 2020.  
[www.bcu.ac.uk/design-management](http://www.bcu.ac.uk/design-management)

### MA Interior Architecture and Design

Full-time. September 2020.  
[www.bcu.ac.uk/interior-design-ma](http://www.bcu.ac.uk/interior-design-ma)

### MA Landscape Architecture

Full-time or part-time. September 2020.  
[www.bcu.ac.uk/landscape-arch-ma](http://www.bcu.ac.uk/landscape-arch-ma)

### MA Landscape Architecture with Conversion

Full-time. September 2020.  
[www.bcu.ac.uk/landscape-conversion](http://www.bcu.ac.uk/landscape-conversion)

### MA Product and Furniture Design

Full-time. September 2020.  
[www.bcu.ac.uk/product-ma](http://www.bcu.ac.uk/product-ma)

## ART

### MA Art and Design: Interdisciplinary Practices

Full-time or part-time. September 2020.  
[www.bcu.ac.uk/art-ma](http://www.bcu.ac.uk/art-ma)

### MA Arts and Education Practices

Full-time or part-time. September 2020.  
[www.bcu.ac.uk/art-education](http://www.bcu.ac.uk/art-education)

### MA Arts and Project Management

Full-time or part-time. September 2020.  
[www.bcu.ac.uk/art-project-mgmt](http://www.bcu.ac.uk/art-project-mgmt)

### MA Contemporary Arts China

Full-time or part-time. September 2020.  
[www.bcu.ac.uk/china-ma](http://www.bcu.ac.uk/china-ma)

### MA Fine Art

Full-time or part-time. September 2020.  
[www.bcu.ac.uk/fine-art-ma](http://www.bcu.ac.uk/fine-art-ma)

## ENGLISH

### MA Creative Writing

Full-time or part-time. September 2020.  
[www.bcu.ac.uk/ma-creative-writing](http://www.bcu.ac.uk/ma-creative-writing)

### MA English Linguistics (Distance Learning)

Continuous dates from January 2021.  
[www.bcu.ac.uk/english-linguistics-ma](http://www.bcu.ac.uk/english-linguistics-ma)

## FASHION AND TEXTILES

### MA Cosmetics Branding and Promotion

Full-time or part-time. September 2020.  
[www.bcu.ac.uk/cosmetics](http://www.bcu.ac.uk/cosmetics)

### MA Fashion Design

Full-time or part-time. September 2020.  
[www.bcu.ac.uk/fashion-des-ma](http://www.bcu.ac.uk/fashion-des-ma)

### MA Fashion Management

Full-time. September 2020 or January 2021.  
[www.bcu.ac.uk/fashion-management-ma](http://www.bcu.ac.uk/fashion-management-ma)

### MA Fashion Promotion

Full-time or part-time. September 2020.  
[www.bcu.ac.uk/fashion-promotion-ma](http://www.bcu.ac.uk/fashion-promotion-ma)

### MA Fashion Styling

Full-time or part-time. September 2020.  
[www.bcu.ac.uk/fashion-styling-ma](http://www.bcu.ac.uk/fashion-styling-ma)

### MA Garment Technology

Full-time or part-time. September 2020.  
[www.bcu.ac.uk/garment-tech-ma](http://www.bcu.ac.uk/garment-tech-ma)

### MA Luxury Brand Management

Full-time. September 2020.  
[www.bcu.ac.uk/luxury-brand-mgmt-ma](http://www.bcu.ac.uk/luxury-brand-mgmt-ma)

### MA Textile and Surface Design

Full-time or part-time. September 2020.  
[www.bcu.ac.uk/textile-surface-design-ma](http://www.bcu.ac.uk/textile-surface-design-ma)

## JEWELLERY AND RELATED PRODUCTS

### GradDip Jewellery and Related Products

Full-time. September 2020.  
[www.bcu.ac.uk/related-products-graddip](http://www.bcu.ac.uk/related-products-graddip)

### MA Jewellery and Related Products

Full-time. September 2020.  
[www.bcu.ac.uk/related-products-ma](http://www.bcu.ac.uk/related-products-ma)

### MA Luxury Jewellery Management

Full-time. September 2020.  
[www.bcu.ac.uk/jewellery-management-ma](http://www.bcu.ac.uk/jewellery-management-ma)

## MEDIA AND MULTIMEDIA TECHNOLOGY

### CIPR Professional Public Relations Certificate

Part-time. November 2020 or January 2021.  
[www.bcu.ac.uk/cipr-adv](http://www.bcu.ac.uk/cipr-adv)

### CIPR Professional Public Relations Diploma

Part-time. October 2020.  
[www.bcu.ac.uk/cipr-dip](http://www.bcu.ac.uk/cipr-dip)

### MA Creative Thinking for Innovation

Full-time. September 2020.  
[www.bcu.ac.uk/creative-thinking-ma](http://www.bcu.ac.uk/creative-thinking-ma)

### MA/PgCert Data Journalism

Full-time (MA) or part-time (PgCert).  
September 2020.  
[www.bcu.ac.uk/data-journalism](http://www.bcu.ac.uk/data-journalism)

### MA Event, Festival and Exhibition Management

Full-time. September 2020.  
[www.bcu.ac.uk/event-exhibition-management](http://www.bcu.ac.uk/event-exhibition-management)

### MA Feature Film Development

Full-time. September 2020.  
[www.bcu.ac.uk/feature-film-development](http://www.bcu.ac.uk/feature-film-development)

### MA Film Distribution and Marketing

Full-time. September 2020.  
[www.bcu.ac.uk/film-distribution-ma](http://www.bcu.ac.uk/film-distribution-ma)

### MA/MSc Future Media

Full-time. September 2020.  
[www.bcu.ac.uk/future-media](http://www.bcu.ac.uk/future-media)

### MA Global Media Management

Full-time. September 2020.  
[www.bcu.ac.uk/global-media](http://www.bcu.ac.uk/global-media)

### MA Media and Cultural Studies

Full-time. September 2020.  
[www.bcu.ac.uk/media-cultural-studies-ma](http://www.bcu.ac.uk/media-cultural-studies-ma)

### MA Media Production

Full-time. September 2020.  
[www.bcu.ac.uk/media-production](http://www.bcu.ac.uk/media-production)

### MA Multiplatform and Mobile Journalism

Full-time. September 2020.  
[www.bcu.ac.uk/multiplatform-journalism](http://www.bcu.ac.uk/multiplatform-journalism)

### MA Public Relations

Full-time. September 2020.  
[www.bcu.ac.uk/public-relations](http://www.bcu.ac.uk/public-relations)

### MA/MSc Video Game Development

Full-time. September 2020.  
[www.bcu.ac.uk/video-game-dev-ma-msc](http://www.bcu.ac.uk/video-game-dev-ma-msc)

### MSc Video Game Enterprise, Production and Design

Full-time. September 2020.  
[www.bcu.ac.uk/video-game-enterprise-msc](http://www.bcu.ac.uk/video-game-enterprise-msc)

## MUSIC

### MMus/PgDip/PgCert Composition

Full-time or part-time. September 2020.  
[www.bcu.ac.uk/composition](http://www.bcu.ac.uk/composition)

### MMus/PgDip Conducting (Brass Band)

Full-time or part-time. September 2020.  
[www.bcu.ac.uk/brass-band-conducting](http://www.bcu.ac.uk/brass-band-conducting)

### MMus/PgDip Conducting (Choral)

Full-time or part-time. September 2020.  
[www.bcu.ac.uk/choral-conducting](http://www.bcu.ac.uk/choral-conducting)

### MMus/PgDip Conducting (Orchestral)

Full-time or part-time. September 2020.  
[www.bcu.ac.uk/orchestral-conducting](http://www.bcu.ac.uk/orchestral-conducting)

### MMus/PgCert/PgDip Experimental Performance

Full-time or part-time. September 2020.  
[www.bcu.ac.uk/experimental-performance](http://www.bcu.ac.uk/experimental-performance)

### MMus/PgDip/PgCert Instrumental Performance

Full-time or part-time. September 2020.  
[www.bcu.ac.uk/instrumental-performance](http://www.bcu.ac.uk/instrumental-performance)

### MMus/PgCert/PgDip Jazz

Full-time or part-time. September 2020.  
[www.bcu.ac.uk/jazz-mmus-pgdip](http://www.bcu.ac.uk/jazz-mmus-pgdip)

### MMus/PgCert/PgDip Music Technology

Full-time or part-time. September 2020.  
[www.bcu.ac.uk/music-tech-mmus](http://www.bcu.ac.uk/music-tech-mmus)

### MA Musicology

Full-time or part-time. September 2020.  
[www.bcu.ac.uk/musicology](http://www.bcu.ac.uk/musicology)

### MMus/PgDip Orchestral Performance

Full-time or part-time. September 2020.  
[www.bcu.ac.uk/orchestral-performance](http://www.bcu.ac.uk/orchestral-performance)

### MMus/PgDip/PgCert Vocal Performance

Full-time or part-time. September 2020.  
[www.bcu.ac.uk/vocal-performance](http://www.bcu.ac.uk/vocal-performance)

### AdvPgDip Professional Performance

Full-time or part-time. September 2020.  
[www.bcu.ac.uk/prof-performance](http://www.bcu.ac.uk/prof-performance)

## VISUAL COMMUNICATION

### MA Visual Communication

Full-time. September 2020 or January 2021.  
[www.bcu.ac.uk/viscom-ma](http://www.bcu.ac.uk/viscom-ma)



# BUSINESS, LAW AND SOCIAL SCIENCES



The Faculty of Business, Law and Social Sciences is a globally aligned faculty, drawing on theories and practice from around the world to inform our learning environment.

Birmingham City Business School is a professionally oriented, international business school focused on connecting you with every aspect of the world of business and innovation. While we have a unique relationship with the city we're rooted in, renowned for its industry and commerce, our courses are designed to meet the needs of businesses across the globe.

With more than four decades of innovative practice in academic and professional legal education and training,

Birmingham City School of Law specialises in social justice, with leading academics who are experts in human rights and the death penalty, as well as civil and social issues.

At Birmingham City School of Social Sciences, our mission is to make sense of the world. Our students and academics work together across the disciplines of Criminology, Psychology and Sociology to develop insights into society.

## ACCOUNTANCY AND FINANCE

### ACCA

Full-time or part-time.  
August 2020 or January 2021.  
[www.bcu.ac.uk/acca-course](http://www.bcu.ac.uk/acca-course)

### MSc Accounting and Finance

Full-time. September 2020.  
[www.bcu.ac.uk/accounting-finance-msc](http://www.bcu.ac.uk/accounting-finance-msc)

### MSc Accounting and Finance (Master's stage)

Full-time. September 2020.  
[www.bcu.ac.uk/accountancy-finance-msc](http://www.bcu.ac.uk/accountancy-finance-msc)

### MSc Accounting and Financial Management

Full-time. September 2020.  
[www.bcu.ac.uk/accounting-financial-mgmt](http://www.bcu.ac.uk/accounting-financial-mgmt)

### MSc Finance and Investment

Full-time. September 2020.  
[www.bcu.ac.uk/finance-investment-msc](http://www.bcu.ac.uk/finance-investment-msc)

### MSc International Professional Accounting\*

Full-time. September 2020.  
[www.bcu.ac.uk/int-professional-accounting](http://www.bcu.ac.uk/int-professional-accounting)

## BUSINESS AND MANAGEMENT

### MBA Executive Master of Business Administration

Part-time. September 2020.  
[www.bcu.ac.uk/exec-mba](http://www.bcu.ac.uk/exec-mba)

### MSc Insurance and Risk Management

Distance learning. Online. September 2020.  
[www.bcu.ac.uk/insurance-msc](http://www.bcu.ac.uk/insurance-msc)

### MSc Internal Audit Management and Consultancy

Full-time, part-time or distance learning.  
October 2020.  
[www.bcu.ac.uk/internal-audit-msc](http://www.bcu.ac.uk/internal-audit-msc)

### MBA International MBA

Full-time or part-time. September 2020.  
[www.bcu.ac.uk/international-mba](http://www.bcu.ac.uk/international-mba)

### MA/PgDip International Human Resource Management

Full-time or part-time. September 2020.  
[www.bcu.ac.uk/imba](http://www.bcu.ac.uk/imba)

### MSc International Sport Management\*

Full-time. September 2020.  
[www.bcu.ac.uk/int-sport-management-msc](http://www.bcu.ac.uk/int-sport-management-msc)

### MSc Management and Entrepreneurship

Full-time. September 2020.  
[www.bcu.ac.uk/entrepreneurship-msc](http://www.bcu.ac.uk/entrepreneurship-msc)

### MSc Management and Finance.

Full-time. September 2020 or January 2021.  
[www.bcu.ac.uk/management-finance-msc](http://www.bcu.ac.uk/management-finance-msc)

### MSc Management and International Business

Full-time. September 2020 or January 2021.  
[www.bcu.ac.uk/international-business-msc](http://www.bcu.ac.uk/international-business-msc)

### MSc Management and Marketing

Full-time. September 2020.  
[www.bcu.ac.uk/management-marketing-msc](http://www.bcu.ac.uk/management-marketing-msc)

### MSc/PgDip Multi-Unit Leadership and Strategy

Part-time. September 2020.  
[www.bcu.ac.uk/multi-unit-pgdip](http://www.bcu.ac.uk/multi-unit-pgdip)

### MSc Organisational Risk Management

Distance learning. September 2020.  
[www.bcu.ac.uk/risk-management-msc](http://www.bcu.ac.uk/risk-management-msc)

## LAW

### LLM International Business Law

Full-time. September 2020 or January 2021.  
[www.bcu.ac.uk/international-business-llm](http://www.bcu.ac.uk/international-business-llm)

### LLM International Human Rights

Full-time. September 2020 or January 2021.  
[www.bcu.ac.uk/human-rights-llm](http://www.bcu.ac.uk/human-rights-llm)

### LLM International Law

Full-time. September 2020 or January 2021.  
[www.bcu.ac.uk/international-law-llm](http://www.bcu.ac.uk/international-law-llm)

### (LPC) Legal Practice Course

Full-time or part-time. September 2020.  
[www.bcu.ac.uk/legal-practice-llm](http://www.bcu.ac.uk/legal-practice-llm)

### LLM Islamic Business Law\*

Full-time. September 2020.  
[www.bcu.ac.uk/islamic-business-law](http://www.bcu.ac.uk/islamic-business-law)

### LLM Legal Practice

Full-time or part-time. September 2020.  
[www.bcu.ac.uk/legal-practice-llm](http://www.bcu.ac.uk/legal-practice-llm)

### LLM/PgDL/CPE LLM Professional Law

Full-time or part-time. September 2020.  
[www.bcu.ac.uk/professional-law-llm](http://www.bcu.ac.uk/professional-law-llm)

### PgDL/CPE Postgraduate Diploma in Law

Full-time or part-time. September 2020.  
[www.bcu.ac.uk/diploma-law](http://www.bcu.ac.uk/diploma-law)

## SOCIAL SCIENCES

### MA Black Studies\*

Full-time. September 2020.  
[www.bcu.ac.uk/black-studies-ma](http://www.bcu.ac.uk/black-studies-ma)

### MA Criminology

Full-time or part-time. September 2020.  
[www.bcu.ac.uk/criminology-ma](http://www.bcu.ac.uk/criminology-ma)

### MSc Forensic Psychology

Full-time or part-time. September 2020.  
[www.bcu.ac.uk/forensic-psychology](http://www.bcu.ac.uk/forensic-psychology)

### MSc Health Psychology

Full-time or part-time. September 2020.  
[www.bcu.ac.uk/health-psychology](http://www.bcu.ac.uk/health-psychology)

### MSc Policing and Intelligence Analysis\*

Full-time. September 2020.  
[www.bcu.ac.uk/policing-intelligence-analysis](http://www.bcu.ac.uk/policing-intelligence-analysis)

### MSc Psychology

Distance Learning. September 2020.  
[www.bcu.ac.uk/psychology-msc](http://www.bcu.ac.uk/psychology-msc)

### MA Security Studies

Full-time or part-time. September 2020.  
[www.bcu.ac.uk/security-ma](http://www.bcu.ac.uk/security-ma)





# COMPUTING, ENGINEERING AND THE BUILT ENVIRONMENT

The Faculty of Computing, Engineering and the Built Environment comprises two schools with a shared vision to create a powerful centre of technological excellence and innovation, and to equip you with the skills you need to succeed in the workplace and contribute to the wider society.

We have excellent resources including state-of-the-art laboratories and engineering workshops, fantastic film and television studios, and the latest computing and digital technologies, all located in a spectacular environment provided by the Millennium Point building.

Our courses are designed to develop highly employable graduates and we have worked closely with our strong employer network to ensure our courses meet their demands and expectations. We work with some of the world's foremost employers, including Microsoft, Cisco and many more.

## BUILT ENVIRONMENT

### MSc Building Surveying with Facilities Management

Full-time or part-time.  
September 2020 or January 2021.  
[www.bcu.ac.uk/surveying](http://www.bcu.ac.uk/surveying)

### MSc Construction Project Management

Full-time or part-time.  
September 2020 or January 2021.  
[www.bcu.ac.uk/construction-pm](http://www.bcu.ac.uk/construction-pm)

### MA Planning Built Environments

Full-time or part-time. September 2020.  
[www.bcu.ac.uk/planning-ma](http://www.bcu.ac.uk/planning-ma)

### MSc/PgCert/PgDip Quantity Surveying

Full-time or part-time.  
September 2020 or January 2021.  
[www.bcu.ac.uk/quantity-surveying-msc](http://www.bcu.ac.uk/quantity-surveying-msc)

### MSc Real Estate Management

Full-time or part-time. September 2020.  
[www.bcu.ac.uk/real-estate-msc](http://www.bcu.ac.uk/real-estate-msc)

## COMPUTING

### MSc Advanced Computer Science

Full-time or part-time.  
September 2020 or January 2021.  
[www.bcu.ac.uk/computer-science-msc](http://www.bcu.ac.uk/computer-science-msc)

### MSc/PgCert/PgDip Big Data Analytics

Full-time or part-time. September 2020.  
[www.bcu.ac.uk/big-data-msc](http://www.bcu.ac.uk/big-data-msc)

### MSc Business Intelligence

Full-time or part-time. September 2020.  
[www.bcu.ac.uk/bus-intelligence-msc](http://www.bcu.ac.uk/bus-intelligence-msc)

### MSc Cyber Security

Full-time or part-time. September 2020.  
[www.bcu.ac.uk/cyber-security-msc](http://www.bcu.ac.uk/cyber-security-msc)

### MSc Data Networks and Security

Full-time or part-time. September 2020.  
[www.bcu.ac.uk/data-security-msc](http://www.bcu.ac.uk/data-security-msc)

### MSc Enterprise Systems Management

Full-time or part-time.  
September 2020 or January 2021.  
[www.bcu.ac.uk/enterprise-systems-msc](http://www.bcu.ac.uk/enterprise-systems-msc)

### MSc User Experience Design

Full-time or part-time. September 2020.  
[www.bcu.ac.uk/user-experience-msc](http://www.bcu.ac.uk/user-experience-msc)

## ENGINEERING

### MSc Automotive Engineering

Full-time or part-time.  
September 2020 or January 2021.  
[www.bcu.ac.uk/auto-engineering](http://www.bcu.ac.uk/auto-engineering)

### MSc International Logistics and Supply Chain Management

Distance learning. September 2020 or January 2021.  
[www.bcu.ac.uk/supply-chain-msc](http://www.bcu.ac.uk/supply-chain-msc)

### MSc International Project Management Distance Learning

Online. September 2020 or January 2021.  
[www.bcu.ac.uk/int-project-management-msc](http://www.bcu.ac.uk/int-project-management-msc)

### MSc Logistics and Supply Chain Management

Full-time or part-time.  
September 2020 or January 2021.  
[www.bcu.ac.uk/logistics-scm-msc](http://www.bcu.ac.uk/logistics-scm-msc)

### MSc Mechanical Engineering

Full-time or part-time.  
September 2020 or January 2021.  
[www.bcu.ac.uk/mechanical-engineering](http://www.bcu.ac.uk/mechanical-engineering)

### MSc Project Management

Full-time or part-time.  
September 2020 or January 2021.  
[www.bcu.ac.uk/project-management-msc](http://www.bcu.ac.uk/project-management-msc)



# HEALTH, EDUCATION AND LIFE SCIENCES



The Faculty of Health, Education and Life Sciences has a long and established history of delivering training for the education and healthcare professions. The quality of our training is reflected in our enviable employability rates with 98% of postgraduates in the School of Education and Social Work, 97% of postgraduates from the School of Nursing and Midwifery, and 100% of postgraduates from the School of Health Sciences in work or further study within six months of graduation\*.

We are committed to teaching quality and have been awarded the Skills for Health Quality Mark, in recognition of the high standard of learning and training delivered on our health courses.

Through our history of working with overseas ministries, academic institutions and professional bodies, we've

supported transformation in local healthcare and education practices. We are currently engaged in collaborative research and delivery in a variety of areas including student progression, and mobility of staff and students.

\*Destination of Leavers from Higher Education Survey 2016/17

## EDUCATION AND TEACHER TRAINING

### MA Education

Full-time. September 2020.

[www.bcu.ac.uk/education-pg-ma](http://www.bcu.ac.uk/education-pg-ma)

### MA Education (International Education)

Full-time or part-time.

September 2020 or February 2021.

[www.bcu.ac.uk/international-education](http://www.bcu.ac.uk/international-education)

### MA Education (Special Needs Education)

Full-time. September 2020.

[www.bcu.ac.uk/special-needs-ma](http://www.bcu.ac.uk/special-needs-ma)

### PGCE Post-Compulsory Education and Training

Full-time. September 2020.

[www.bcu.ac.uk/pcet](http://www.bcu.ac.uk/pcet)

### PGCE Primary and Early Years Education

Full-time and part-time. September 2020.

[www.bcu.ac.uk/pgce-primary](http://www.bcu.ac.uk/pgce-primary)

### PGCE Primary Education with Specialism in Mathematics with QTS

Full-time. September 2020.

[www.bcu.ac.uk/pgce-primary-maths](http://www.bcu.ac.uk/pgce-primary-maths)

### PGCE Primary Education with Specialism in SEN with QTS

Full-time. September 2020.

[www.bcu.ac.uk/pgce-primary-sen](http://www.bcu.ac.uk/pgce-primary-sen)

### PGCE Secondary Art and Design

Full-time. September 2020.

[www.bcu.ac.uk/pgce-art-and-design](http://www.bcu.ac.uk/pgce-art-and-design)

### PGCE Secondary Computer Science and IT

Full-time. September 2020.

[www.bcu.ac.uk/pgce-computer-science](http://www.bcu.ac.uk/pgce-computer-science)

### PGCE Secondary Design and Technology: Food, Textiles and Product Design

Full-time. September 2020.

[www.bcu.ac.uk/pgce-dt](http://www.bcu.ac.uk/pgce-dt)

### PGCE Secondary Drama

Full-time. September 2020.

[www.bcu.ac.uk/pgce-drama](http://www.bcu.ac.uk/pgce-drama)

### PGCE Secondary English

Full-time. September 2020.

[www.bcu.ac.uk/pgce-english](http://www.bcu.ac.uk/pgce-english)

### PGCE Secondary Geography

Full-time. September 2020.

[www.bcu.ac.uk/pgce-geography](http://www.bcu.ac.uk/pgce-geography)

### PGCE Secondary History

Full-time. September 2020.

[www.bcu.ac.uk/pgce-history](http://www.bcu.ac.uk/pgce-history)

### PGCE Secondary Mathematics

Full-time. September 2020.

[www.bcu.ac.uk/pgce-maths](http://www.bcu.ac.uk/pgce-maths)

### PGCE Secondary Music

Full-time. September 2020.

[www.bcu.ac.uk/pgce-music](http://www.bcu.ac.uk/pgce-music)

### PGCE Secondary Physical Education

Full-time. September 2020.

[www.bcu.ac.uk/pgce-pe](http://www.bcu.ac.uk/pgce-pe)

### PGCE Secondary Religious Education

Full-time. September 2020.

[www.bcu.ac.uk/pgce-re](http://www.bcu.ac.uk/pgce-re)

### PGCE Secondary Science: Biology

Full-time. September 2020.

[www.bcu.ac.uk/pgce-biology](http://www.bcu.ac.uk/pgce-biology)

### PGCE Secondary Science: Chemistry

Full-time. September 2020.

[www.bcu.ac.uk/pgce-chemistry](http://www.bcu.ac.uk/pgce-chemistry)

### PGCE Secondary Science: Physics

Full-time. September 2020.

[www.bcu.ac.uk/pgce-physics](http://www.bcu.ac.uk/pgce-physics)

## HEALTH

### MSc/PgCert/PgDip Advanced Clinical Practice

Part-time. September 2020.

[www.bcu.ac.uk/adv-clinical-practice](http://www.bcu.ac.uk/adv-clinical-practice)

### PgDip Community Health Nursing Specialist Practitioner

Full-time or part-time. September 2020.

[www.bcu.ac.uk/community-health-nursing-spp](http://www.bcu.ac.uk/community-health-nursing-spp)

### Adv ProfDip/GradCert Clinical Hypnosis and Related Techniques

Part-time. September 2020.

[www.bcu.ac.uk/hypnosis](http://www.bcu.ac.uk/hypnosis)

### MSc (pre-registration) Speech and Language Therapy

Full-time. January 2021.

[www.bcu.ac.uk/msc-slt](http://www.bcu.ac.uk/msc-slt)

### MSc Advancing Diabetes Care

Part-time. September 2020.

[www.bcu.ac.uk/pg-diabetes](http://www.bcu.ac.uk/pg-diabetes)

### MSc (pre-registration) Dietetics

Full-time. January 2021.

[www.bcu.ac.uk/dietetics-msc](http://www.bcu.ac.uk/dietetics-msc)

### MRes Life Sciences, Sport and Exercise Sciences\* or Allied Health Professions

Full-time or part-time. September 2020.

[www.bcu.ac.uk/mres-life-health-sport](http://www.bcu.ac.uk/mres-life-health-sport)

### MSc Medical Engineering\*

Full-time. September 2020.

[www.bcu.ac.uk/medical-eng](http://www.bcu.ac.uk/medical-eng)

### Module/MSc/PgCert/PgDip Medical Ultrasound

Part-time. September 2020.

[www.bcu.ac.uk/medical-ultrasound-msc](http://www.bcu.ac.uk/medical-ultrasound-msc)

### MSc (pre-registration) Physiotherapy

Full-time. January 2021.

[www.bcu.ac.uk/physio-msc](http://www.bcu.ac.uk/physio-msc)

### Module/MSc/PgDip/PgCert Professional Practice

Short course. Various dates.

[www.bcu.ac.uk/nursing-professional-practice](http://www.bcu.ac.uk/nursing-professional-practice)

### MSc/PgCert/PgDip Public Health

Full-time or part-time. September 2020.

[www.bcu.ac.uk/public-health-msc](http://www.bcu.ac.uk/public-health-msc)

### Module/MSc/PgCert/PgDip Radiography

Part-time. January 2021.

[www.bcu.ac.uk/radiography-msc](http://www.bcu.ac.uk/radiography-msc)

### Module/MSc/PgCert/PgDip Safeguarding

Part-time. September 2020.

[www.bcu.ac.uk/safeguarding-msc](http://www.bcu.ac.uk/safeguarding-msc)

### MSc Social Work

Full-time. September 2020.

[www.bcu.ac.uk/social-work-msc](http://www.bcu.ac.uk/social-work-msc)

### PgDip Specialist Community Public Health Nurse (HV/SN)

Full-time. September 2020.

[www.bcu.ac.uk/specialist-community-pg](http://www.bcu.ac.uk/specialist-community-pg)

### MSc Transforming and Leading in Health Care

Full-time or part-time. September 2020.

[www.bcu.ac.uk/transforming-leading](http://www.bcu.ac.uk/transforming-leading)

# NEXT STEPS

## 1 FIND YOUR COURSE ON OUR WEBSITE

Pop onto our website and find the course you wish to study.



## 2 SPEAK TO AN ACADEMIC

Who better to speak to than a person currently teaching the course? Every single course web page has the option to speak directly to an academic so you can find out the finer details of what you could learn.



## 3 CHECK YOU MEET THE ENTRY REQUIREMENTS

Once you have found the course you'd like to apply to, it's important that you meet the entry requirements.

Some courses require an undergraduate degree in a related subject, while some require a certain amount of work experience and/or an interview. Entry requirements can be found in the individual course listings in our courses section online.



## 4 SPEAK TO THE COURSE ENQUIRIES TEAM

The Course Enquiries Team is a dedicated information and guidance team here to help you find out more about studying at Birmingham City University. We'll provide you with the information you need to make an informed choice about the correct course for you.

Complete our online form or call +44 (0)121 331 5595.

## 5 JOIN US AT AN EVENT

To really get a feel for life at the University, there is nothing better than visiting us in person. At our Open Days, you can chat with staff and students, view our fantastic facilities, learn more about the Students' Union or take a tour of our accommodation.

[www.bcu.ac.uk/pg-events](http://www.bcu.ac.uk/pg-events)



## 6 PREPARE

Prepare your personal statement, references and portfolios if required.



## 7 APPLY DIRECTLY ONLINE

Once you're ready, you can apply directly for the course on our website. All you need to do is register for an account and you'll have step by step instructions on what to do next.



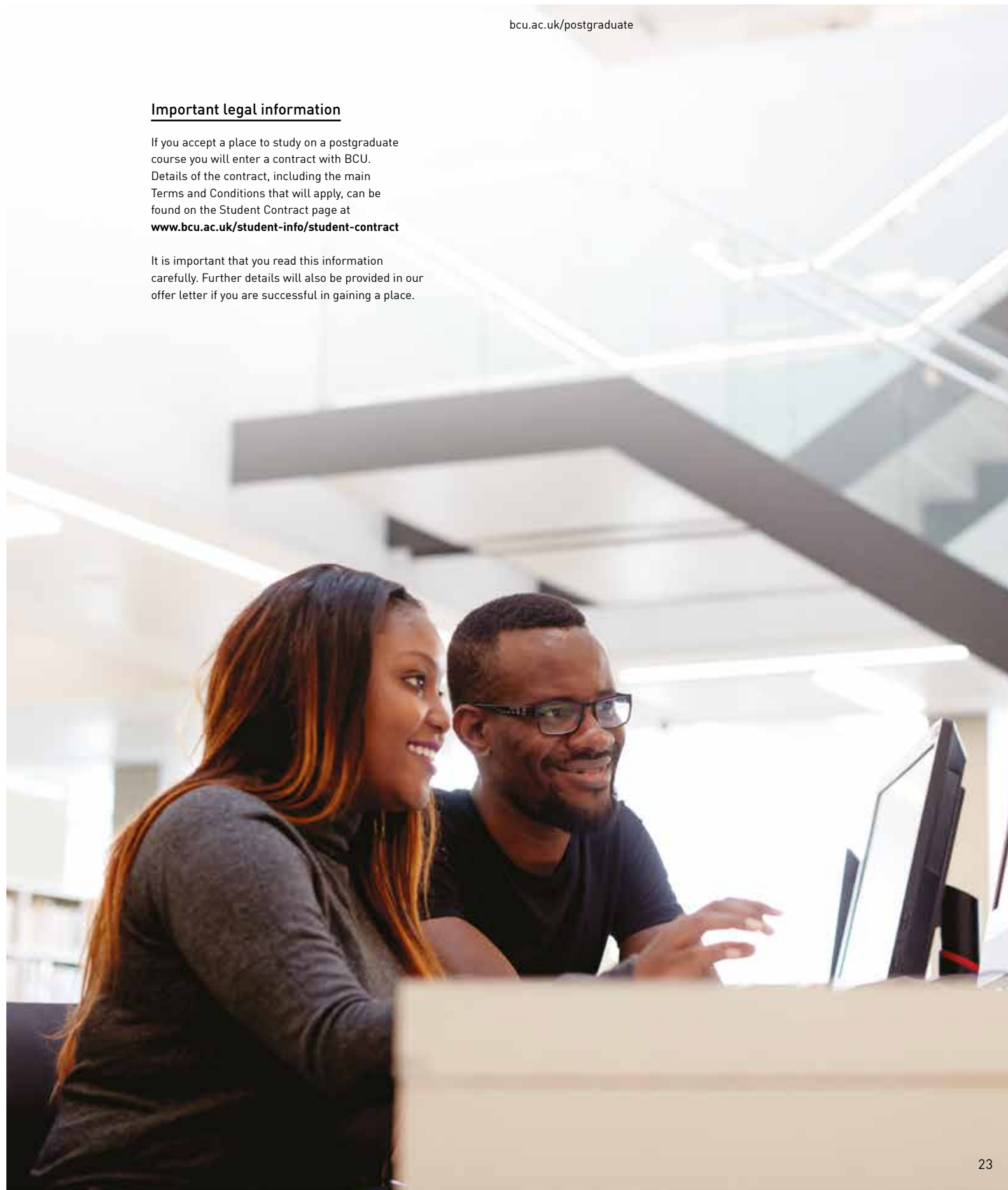
## 8 RECEIVE AN OFFER

Once you have satisfied the entry requirements and we've received all of your documents, we'll let you know if you have been successful. You may need to supply extra documents but we'll let you know. Then you'll need to accept your place, and will then receive information about joining us.

### Important legal information

If you accept a place to study on a postgraduate course you will enter a contract with BCU. Details of the contract, including the main Terms and Conditions that will apply, can be found on the Student Contract page at [www.bcu.ac.uk/student-info/student-contract](http://www.bcu.ac.uk/student-info/student-contract)

It is important that you read this information carefully. Further details will also be provided in our offer letter if you are successful in gaining a place.





[www.bcu.ac.uk/postgraduate](http://www.bcu.ac.uk/postgraduate)  
+44 (0)121 331 5595

-  [birminghamcityuniversity](https://www.facebook.com/birminghamcityuniversity)
-  [birminghamcityuni](https://www.youtube.com/birminghamcityuni)
-  [@myBCU](https://twitter.com/myBCU)
-  [@myBCUresearch](https://twitter.com/myBCUresearch)
-  [myBCU](https://www.instagram.com/myBCU)
-  [blogs.bcu.ac.uk/views](https://blogs.bcu.ac.uk/views)