



BIRMINGHAM CITY
University



CHRISTMAS IN BIRMINGHAM

2022



CHRISTMAS IN BIRMINGHAM PROGRAMME

Christmas in Birmingham is a programme for all the students staying away from their loved ones during the Christmas period. The aim of the programme is to have events which students can get involved with during the Christmas break which will help them to be a part of the community at BCU and in Birmingham. This programme will have several internal, external and events taking place in student accommodation to help students to feel better during Christmas time.

Join our Facebook group to stay in touch with other students and plan your Christmas holiday in Birmingham:
www.facebook.com/groups/iosept22



INTERNAL EVENTS

Swing Into Christmas

Sunday 11 Dec 2022

Times: 7pm

Location: The Bradshaw Hall, Royal Birmingham Conservatoire, 200 Jennens Road, B4 7XR

Price: £20 for full time students

Celebrate the festive season in style with the vocalists and instrumentalists of Down for the Count Concert Orchestra, as they Swing Into Christmas!

This is a Christmas celebration like no other, as Down for the Count recreate the music of Nat 'King' Cole, Billie Holiday, Ella Fitzgerald, Frank Sinatra and many more in a luscious 25-piece orchestra setting evoking the sounds of the great Capitol Studios recordings. For booking and more information, please use this [link](#).

Christmas lunch

Wednesday 14 December 2022

Times: 12 - 3pm

Location: C087, Curzon Building, 4 Cardigan Street, B4 7BD

BCU International Office is hosting a Christmas Lunch, free for all international and BCUIIC students! For booking and more information, please use this [link](#)



INTERNAL EVENTS

Vice Chancellor's Concert: A Jazzy Christmas

Thursday 15 Dec 2022

Times: 6 - 7:30pm

Location: The Bradshaw Hall, Royal Birmingham Conservatoire, 200 Jennens Road, B4 7XR

Price: Free

Kickstart the festivities in December by booking your place at the Vice-Chancellor's Concert: A Jazzy Christmas. The concert will feature music from the Royal Birmingham Conservatoire Duke Ellington Orchestra, directed by Associate Professor in Jazz Jeremy Price, and vocalists from Eastside Voices.

Firstly, enjoy festive refreshments at the drinks reception from 6pm to get you in the Christmas spirit. The concert will start at 6.30pm, and will last around an hour.

The performance will feature a Christmas selection of Big Band music, which will include highlights from Duke Ellington's Nutcracker Suite, and popular seasonal show songs.

This is the perfect opportunity for a Christmas celebration with the BCU community, so get your ticket now! For booking and more information please use this [link](#).

BCUSU Film Night: Elf

Thursday 22 December

Times: 5 - 8pm

Location: Curzon Building, City Centre Campus

Watch along as we screen the Christmas classic, Elf!. This is a ticketed event, so make sure you book your place below!

www.bcsu.com/ents/event/5233/



EXTERNAL EVENTS

Birmingham Frankfurt Christmas market

Event Dates: 3 Nov – 23 Dec

Times: 10am - 9pm

Location: Birmingham City Centre

The largest authentic German Christmas market outside of Germany or Austria Birmingham's Frankfurt Christmas Market offers a large range of traditional good and gifts and a selection of tempting food and drink. Pretzels, schnitzels, bratwursts, and roasted almonds will tempt your tastebuds, all of which can be washed down with gluhwein, weissbeer (wheat beer), or tasty hot chocolate. For booking and more information please use this [link](#).

Big wheel and ice skating

Event dates: 3 Nov - 8 Jan (ex. Christmas Day)

Times: 10am - 10pm

Location: Centenary Square

Riding the big wheel gives you the opportunity to enjoy fantastic views of Birmingham. Relax and enjoy some of Birmingham's most impressive sights, such as the Library of Birmingham, Council House, Town Hall, Cube, Brindley Place and Britain's biggest German Christmas Market.

Experience the magic of ice skating outdoors in the heart of Birmingham, next to the big wheel. Feel like you're in a scene from a Hollywood film on 600 sq metres of real ice. There isn't a better way to celebrate Christmas! For booking and more information please use this [link](#).

Botanical Gardens Winter Light Trail

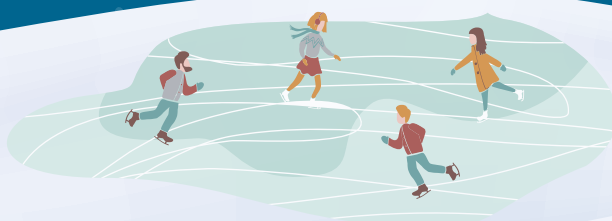
Event Dates: 26 Nov – 2 Jan (except Christmas Day and Boxing Day)

Location: Westbourne Rd, Birmingham B15 3TR

Price: Tickets from £15

As darkness descends, join us on our enchanting journey, as we weave a captivating light trail through the stunning, historic grounds of Birmingham Botanical Gardens. Immerse yourself in our mesmerising almost mile long trail, with stunning lighting elements and fabulous light play, all set to ambient music.

[Find out more and book tickets online.](#)



EXTERNAL EVENTS

BIRMINGHAM PANTOMIMES

Pantomimes are a British traditional and each year there is so much variety on offer at local theatres!

Dick Whittington

Event dates: 17 Dec - 29 Jan

Location: Birmingham Hippodrome
Theatre Hurst Street, Southside,
Birmingham, B5 4TB

Price: Tickets from £16.50

[Find out more and book tickets online.](#)

Beauty and the Beast

Event Dates: 18 Nov - 16 Dec

Location: The Old Rep Theatre, Station
Street, Birmingham, B5 4DY

Price: Tickets from £21.50

[Find out more and book tickets online.](#)

Aladdin

Event dates: 3 Dec - 7 Jan

Location: Lichfield Street,
Wolverhampton, WV1 1DE

Price: Tickets from £16.50

[Find out more and book tickets online.](#)

Winter Funland Nec

Event Dates: 10 Dec – 2 Jan

(Except Christmas Day)

Location: North Ave, Marston Green, B40 1NT

Price: Tickets from £28.60

The UK's largest indoor funfair, it's the perfect Christmas experience for all the family, with 4 hours of unlimited funfair rides, ice skating and a festival circus included in the ticket price. Winter Funland is a great opportunity to wear your Christmas jumpers and get into spirit....without worrying about the weather!

Expect plenty of Christmas magic, with all the fun of the fair and a spectacular circus show. They'll be lots of smiles on the ice rink too, whether you're gliding along like a pro or wobbling along with the help of one of our penguins! Visit our food and drink vendors for that Christmas market feeling, and watch out for the mischievous elves who'll be popping up around the event to help you make some special memories. For booking and more information please use this [link](#).



EXTERNAL EVENTS

Penguin Parade Trail

Event Dates: 9 Nov – 6 Jan

Location: Birmingham City Centre

Price: Free event!

A new Penguin Parade Trail is coming to Birmingham featuring 15 specially designed giant penguins that sum up 'the wonderful feeling of Christmas'.

Best of all, the trail is completely free to enjoy. Similar to the Walking with the Snowman Trail, which was inspired by the Raymond Briggs' classic, this year's festive event is being organised by Central BID Birmingham and will help raise funds for Birmingham Children's Hospital Charity.

Look out for penguins at Bullring and Grand Central, The Mailbox, Great Western Arcade, Piccadilly Arcade, instore at Selfridges and Primark and at all the festive city centre attractions including Christmas in Cathedral Square and the Big Wheel. For details of where to find the penguins, please visit this [link](#).

Christmas at Cadbury World

Event dates: 19 Nov - 23 Dec

Location: 84 Linden Road, Bournville, B30 1LA

Price: Student tickets from £17.10

With the festive season just around the corner, families are invited to step into a chocolatey winter wonderland at Cadbury World.

Guests to Cadbury World can enjoy fantastic festivities, including Santa's popular stage show and a magical Cinderella pantomime, during weekends as well as mid-week. For booking and more information please use this [link](#).

A Swinging Christmas With The CBSO

Event dates: 21 Dec, 7.30pm

Location: Symphony Hall, Centenary Square, Birmingham, B1 2EA

Price: Tickets from £5 for students in full time education

It's the most wonderful time of the year! Tonight, the CBSO transforms itself into a seasonal time machine, with top West End vocalists singing the hit songs of Christmases gone by, from Frosty the Snowman and Jingle Bells to Sleigh Ride and of course White Christmas. Join us and get your festive spirit into the swing of things as all we want for Christmas, is you! For booking and more information please use this [link](#).



CHRISTMAS IN BIRMINGHAM PROGRAMME

University Locks, Jennens Court, The Heights, Lakeside, Staniforth House, Queen's Hospital Close, and Bentley House will be organising local events at the halls of residence. For more information regarding the Christmas events please get in touch with your respective accommodation teams.

MORE EVENTS:

There is always something going on in the amazing and multicultural city of Birmingham. [This link](#) has very detailed information about all the events which will be taking place during the holiday period. If you are thinking to eat out during the Christmas period [here is an online guide](#) for suggestions of restaurants, coffee shops, pizza places etc. Please make sure you book your place in advance as especially during the holidays the restaurants may get booked up very quickly.



INFORMATION AND SUPPORT

Libraries will be opening for shorter period of times during the holiday season. All BCU libraries except Curzon Library will be closed between 24 December and 26 December. On 24 December, Curzon Library will be open from 10am-5pm and will be self-service only. The Curzon Library will be open for reduced hours of 10am-5pm between 27 December and 2 January while all other libraries will remain closed. For more information regarding the library opening times please [visit Libcal](#) by Library and Learning Resources.

The Open Learning Zones will be open at the same times as the libraries and there will be free hot and cold drinks, biscuits, and a selection of board games for students who want to spend some time relaxing away from home. The university will be closed for Christmas Vacation and New Year from 24 December 2021 – 3 January 2022.

Birmingham Central library will be closed from 25 to 27 December, reopening on 28 December. For more information please visit the [Birmingham Library website](#).

Academics and students on Birmingham City University's Sports and Exercise Nutrition course have drawn up a '[survival guide](#)' to help students and workers alike negotiate the festive fun without piling on too many pounds, risking illness or struggling with hangovers.

Do you know how to cook a Christmas dinner? If not, then watch [this fun video](#) by the vloggers of Birmingham City University.

[What can you do to reduce the impact of depression on your Christmas?](#) Kim Moore, Senior Lecturer in Mental Health Nursing at Birmingham City University, discusses depression at Christmas and what steps can be taken to help reduce it.

If you are thinking of giving a lot of gifts to your dear one, why not have a read of '[A Zero Waste Life](#)' blog by our alumni Charlotte and Anna, in which they discuss how to celebrate a Zero Waste Christmas.



ADDITIONAL HELP AND SUPPORT

The Big White Wall

Provide online services Free for BCU students.
Register with your University email.
Website: www.bigwhitewall.com

Pause (Forward Thinking Birmingham)

Drop-in Mental Health support is available for those aged 0-25.
Tel: 0300 300 0099
Address: 21 Digbeth, Birmingham B5 6BJ
Website: forwardthinkingbirmingham.nhs.uk/pause

Birmingham and Solihull Mental Health Trust

Support for over-26s, GP referral required.
Tel: 0121 262 3555 or 0800 915 9292
Email: help@birminghammind.org
Website: www.bsmhft.nhs.uk

Open Door Youth Counselling

Free counselling for six sessions to those aged 12 - 26 if you are referred by your GP.
Tel: 0121 454 1116
Website: www.opendooryouthcounselling.org.uk

Beat

Supports people who have Eating Disorders.
Helpline: 0808 801 0677
Email: help@beateatingdisorders.org.uk
Website: www.beateatingdisorders.org.uk/

Birmingham LGBT

Campaigns and Provides Support for LGBT people in Birmingham.
Tel: 0121 643 0821
Email: hello@blgbt.org
Website: blgbt.org

RSVP: Rape and Sexual Violence Project

Provide Support to all people that may have experienced Sexual Violence.
Tel: 0121 643 0301
Email: info@rsvporg.co.uk
Website: www.rsvporg.co.uk

Umbrella

Sexual Health Service.
Tel: 0121 237 5700
Website: umbrellahealth.co.uk



ADDITIONAL HELP AND SUPPORT

Talk To Frank

For drug and alcohol misuse.
Tel: 0300 123 6600
Email: frank@talktofrank.com
Website: www.talktofrank.com/

Autism West Midlands

Autism Resources and Support.
Phone: 0121 450 7575
Email: info@autismwestmidlands.org.uk
Website: www.autismwestmidlands.org.uk

Mind

Educating and Campaigning on Mental Health Problems across the Board.
Info Line: 0300 123 3393
Email: info@mind.org.uk
Website: www.mind.org.uk

The Samaritans

Provide confidential non-judgmental emotional support 24 hours a day for people experiencing feelings of distress.
Helpline: 116 123
Email: jo@samaritans.org
Website: www.samaritans.org

PAPYRUS Prevention of Young Suicide

Provides support on Suicide Prevention.
Tel: 0800 068 41 41
Text: 07860 039967
Email: pat@papyrus-uk.org
Website: www.papyrus-uk.org

Mental Health Foundation

Working on Supporting Mental Health for the individual and for the whole of society.
Shout Crisis Textline: 85258
Rethink Advice: 0300 5000 927
Website: www.mentalhealth.org.uk

CALM - Campaign Against Living Miserably

Mental Health and Suicide Support
Helpline: 0800 585858
Webchat: www.thecalmzone.net/get-support#open-calmbot

Aquarius

Alcohol, Drugs and Gambling.
Tel: 0121 622 8181
Address: 236 Bristol Road, Edgbaston, Birmingham B5 7SL
Email: headoffice@aquarius.org.uk
Website: aquarius.org.uk



T: +44 (0) 121 331 5389

E: international.enquiries@bcu.ac.uk

www.bcu.ac.uk/international

 @MyBCU

 /birminghamcityuniversityinternational

