



BIRMINGHAM CITY
University



RECOGNITION OF PRIOR LEARNING

**Advice for students considering applying for a
BCU Health, Education and Life Sciences course.**

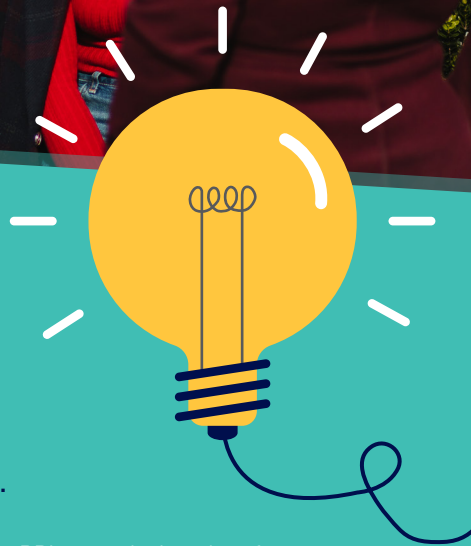
Recognition of Prior Learning (RPL) is a process in which universities can review, and where appropriate, recognise your prior university learning and credits towards an award within their institute.

At Birmingham City University (BCU) RPL is considered a part of the application and admissions process. Should you wish to have your previously achieved credits or part of an award recognised towards an award at BCU, you will need to highlight this during the admissions process and request access to the RPL information.

RPL can be a complex and lengthy process, dependent upon the award you are wishing

to have RPL towards. It is therefore important that RPL advice and the process is started in a timely manner. If RPL is applied for close to an enrolment date, the BCU RPL Team cannot guarantee it will be reviewed, and potentially approved in time for you to start your award. Applying for RPL is in accordance with BCU regulations and must be done before enrolment.

Please note, RPL cannot be applied for after enrolment, and successful RPL is not an offer of admission to an award.



WHAT DO YOU NEED FOR RPL?

BCU RPL regulations require you to demonstrate at least an 80% match of your previous institute studies (content and learning outcomes) to that of the BCU course you are applying to join. For courses that have Professional Body requirements the RPL process will be more complex.

In some cases, you will be asked to complete a mapping document, that lists and describes the evidence you are providing and how it links to a BCU course. All evidence must be on official documents, and clear to view and read.

The following list provides an idea of the types of evidence you will need to collate and send in with your RPL application dependent upon the course applied for. Please note, in most if not all cases you will need to supply a selection of evidence to support your RPL application.



Certificates / Transcripts of achievement that demonstrate pass marks and how many credits have been awarded.



Course / Module documentation that clearly demonstrate content covered and learning outcomes.



Evidence of placement hours - course dependent e.g nursing / radiography / teaching etc.



Evidence of passing placement - course dependent e.g nursing / radiography / teaching etc.



Evidence of passing numeracy or safe medicate - course dependent e.g nursing / radiography / teaching etc.



For an RPL application and further information please contact: Hels.rpl@bcu.ac.uk