

The information is out there



Trudi Pledger & Helen Ryba (BCU)
Martin Elcock (NHS – UHB)

Outline of session

Why are we here?

What information is out there?

How do you get what you want?



What is Research?

Research is defined as a systematic activity that:

- attempts to answer a clearly defined question
- employs systematic and rigorous methods – including quantitative and/or qualitative methods
- leads to generalisable and new knowledge

For an activity to be classified as research it must meet all three qualifying statements

Department of Health (2006) Research governance framework for health and social care. London: Department of Health. p6

What type of research?

1. QUANTITATIVE :

Relating to treatment effectiveness, exposure to harm and causes of diseases

2. QUALITATIVE :

Relating to the lived experience, views, beliefs, perceptions and attitudes of people.

Some more definitions

Primary Source:

The place where *Primary* and *Secondary Research* are first published (often, but not always, after ***Peer Review***).

Secondary Source:

The place of second reporting. The place where *Primary* and *Secondary Research* previously presented in a Primary Source is related or discussed.

Primary and secondary sources: JOURNALS

Research

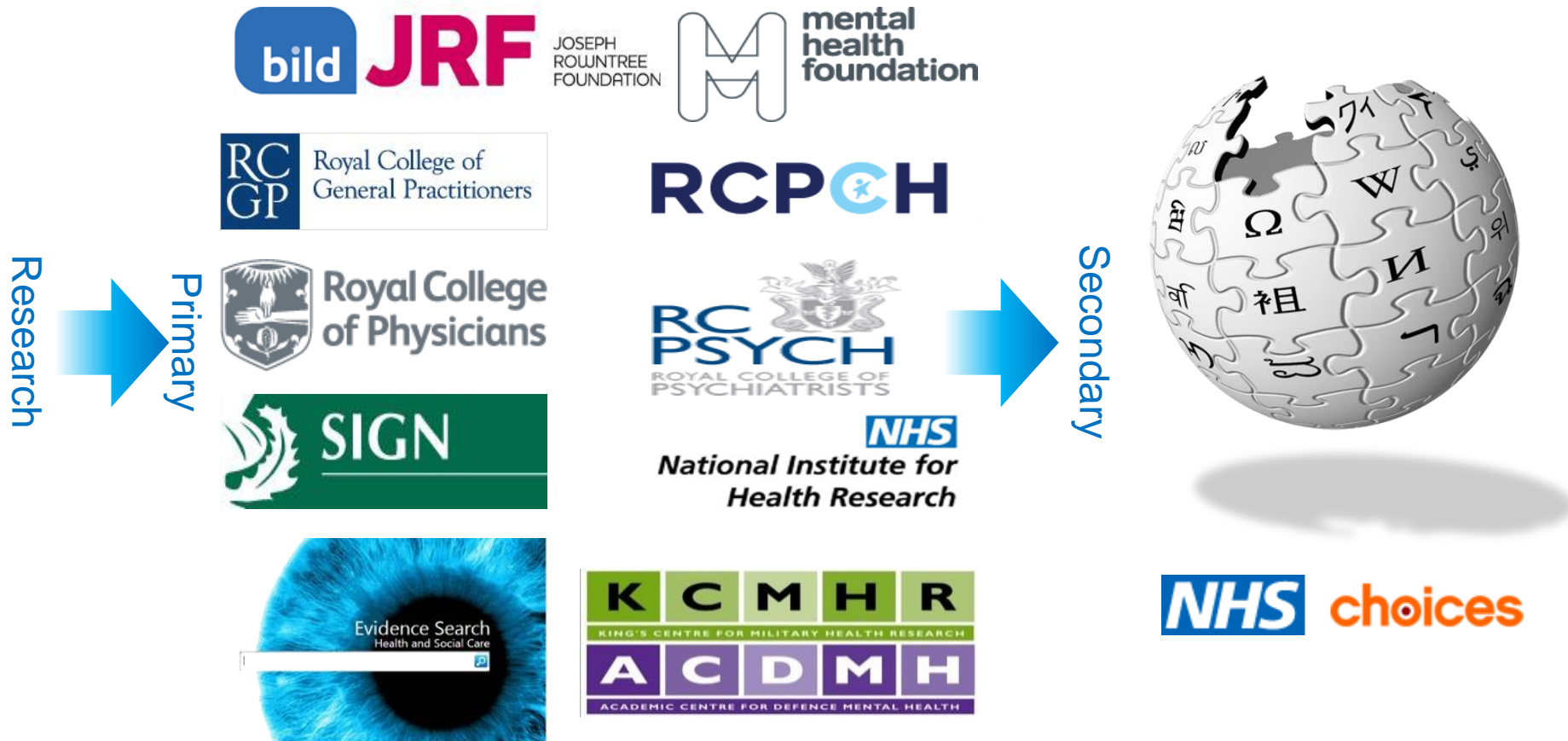
Primary Journals



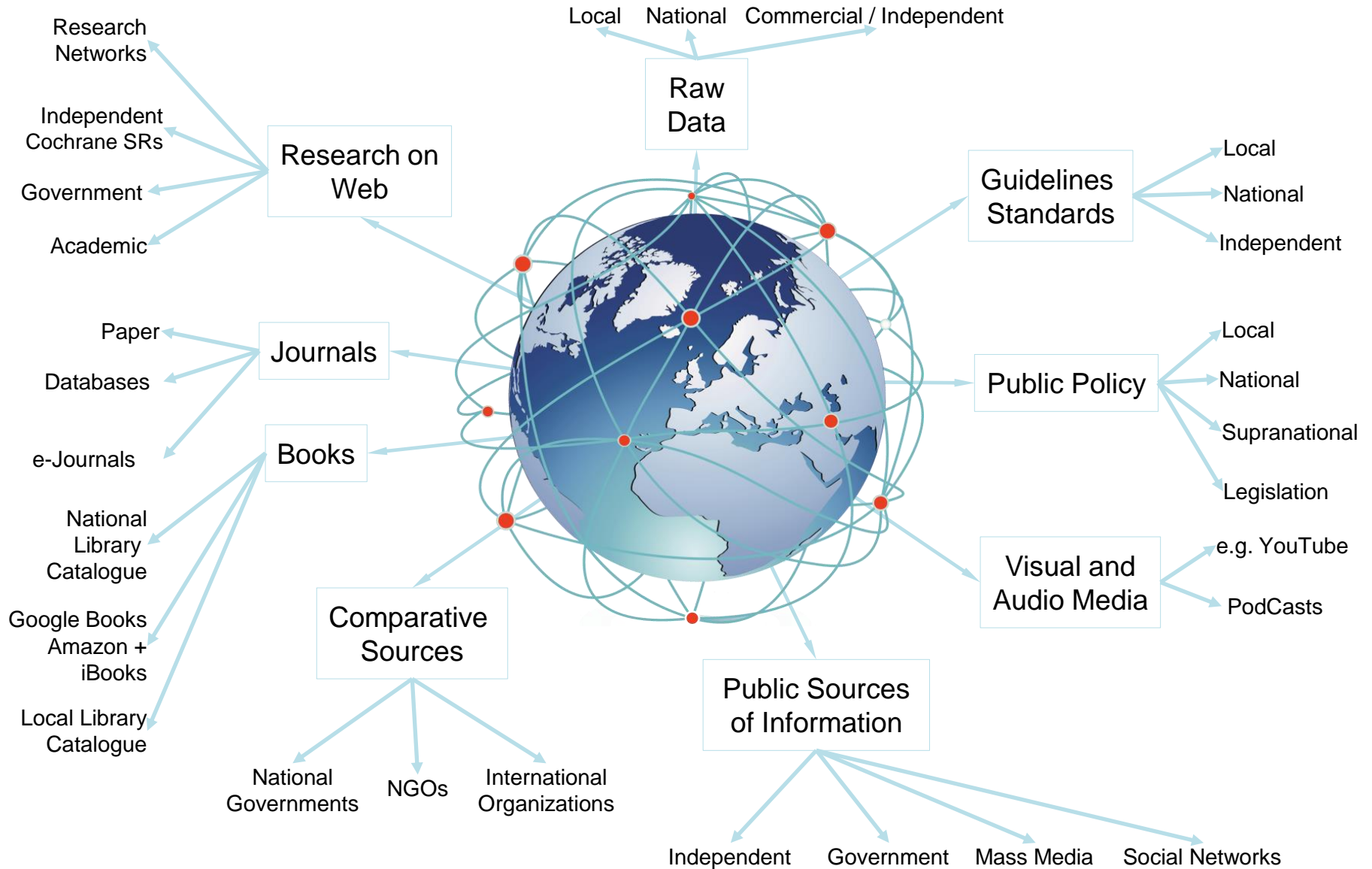
Secondary Journals



Secondary and primary sources: WEB



Healthcare Information Landscape



Database subject coverage

Cochrane Library

Systematic reviews and clinical trials

CINAHL

Nursing and allied health journals

Medline

Medicine, Psychiatry, Health Services

PsycARTICLES/PsycINFO

Psychology, Mental Health

Maternity and Infant Care

Midwifery

NHS Evidence

Clinical guidelines, knowledge summaries

British Nursing Index

Nursing and Midwifery

Embase

Biomedical

PILOTS

Post Traumatic Stress Disorder

ETC.....

The Information is Out There – Mapping and finding the information to help develop your ideas

Martin Elcock

Librarian: Outreach

University Hospitals Birmingham NHS Foundation Trust

NHS healthcare libraries

At the forefront of evidence-based care

Underpinning your research

Supporting your professional development



Why register with an NHS Library?

Access to high quality evidence-based healthcare information and it's free (at point of use)!

- **Borrow** books/DVDs to support your practice
- **Online resources**
(NICE Evidence, journals, ebooks, specialist resources)
- Free online access **NHS OpenAthens account**
Register at: <https://openathens.nice.org.uk/>

- Request a **literature search**
- **Document supply** service (request journal articles)
- **Training** (searching databases, critical appraisal)



Underpinning your research

<http://www.evidence.nhs.uk/>

NICE National Institute for
Health and Care Excellence



NICE
Pathways



Guidance



Standards
and Indicators



Evidence
services

Sign in

Evidence search

BNF

BNFC

CKS

Journals and databases

Evidence search

Health and social care



Search our unique index of authoritative,
evidence-based information from hundreds
of trustworthy and accredited sources.



Delivering the **best** in care

University Hospitals **NHS**
Birmingham
NHS Foundation Trust

Start your search here! <http://www.evidence.nhs.uk/>

4 core areas designed to support healthcare professionals

Free to access but NHS Athens login gives you additional content!

- Pathways
- Standards & Indicators
- Guidance & Advice
(clinical guidelines, medicines advice)
- Evidence Services
(evidence search, journals and databases, BNF)

Guidance and Advice

Over 1000 guidelines

- Clinical
- Public health
- Social care
- Medicines advice (new and off-label)



Filter by type of guidance

Conditions and diseases

Life style

Patient group

NICE guidance

By month

In development

Consultations

Lists of NICE guidance, including published guidance, in development and consultations

➤ All NICE guidelines

➤ Clinical guidelines

➤ Public health guidelines

➤ Social care guidelines

➤ Safe staffing guidelines

➤ Medicines practice guidelines

➤ Quality standards

➤ Technology appraisals

➤ Interventional procedures

➤ Medical technologies

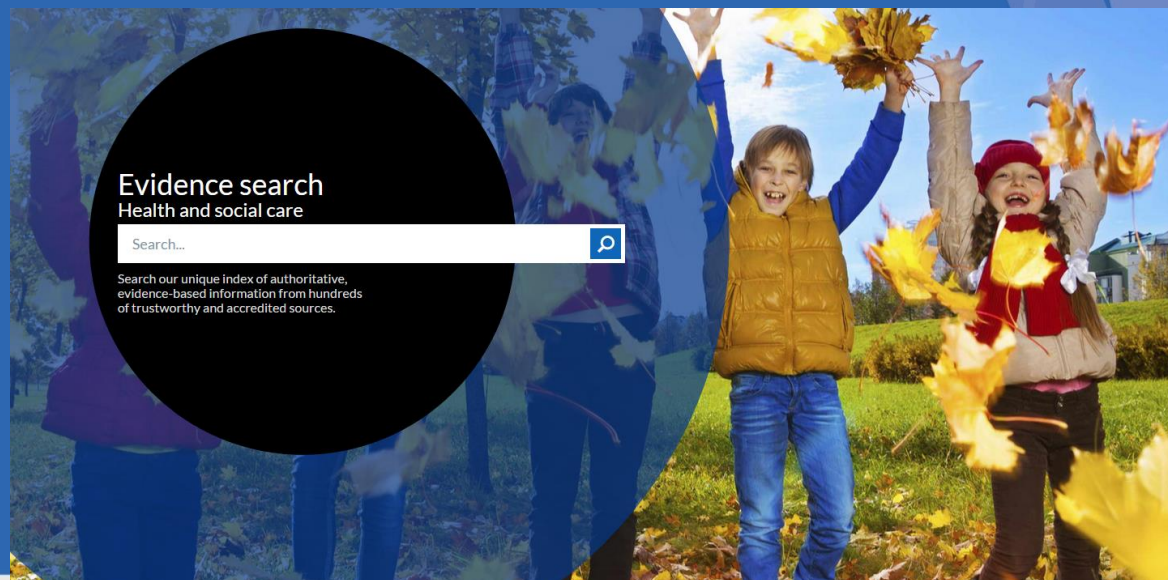
➤ Diagnostics

➤ Highly specialised technologies

Evidence Services 100s of quality-assessed sources

British National Formulary, Clinical Knowledge Summaries, SIGN, the Cochrane Library and Royal Colleges, Social Care Online and GOV.UK.

- Sources are reviewed on a regular basis by NICE
- Guide to searching available
- Process and Methods manual and list of sources



Journals and databases Advanced searching

- Cumulative Index to Nursing and Allied Health Literature (CINAHL)
- British Nursing Index (BNI)
- Allied and Complementary Medicine (AMED)
- Journals (title search)
- Cochrane Library (6 databases including systematic reviews)



Quick access to reliable information for health and social care professionals. Search journals, databases, e-books and specialist evidence.

Healthcare databases advanced search (HDAS)*

Search databases AMED, British Nursing Index, CINAHL, EMBASE, HMIC, MEDLINE, PsycINFO, and Health Business Elite.

[Begin an advanced search](#)

* Requires an OpenAthens account.

Pubmed (simple) search

A quick search of Pubmed (no OpenAthens account required).

[Begin a Pubmed search](#)

Databases*

ProQuest Hospital Collection

Offers an extensive range of health and social care publications and evidence-based resources.

PsycARTICLES

Search full-text articles from leading psychology journals.

Journals

- A-Z list of nationally available journals
- Sign in to OpenAthens to see extra content purchased in your region

Specialist evidence resources

Cochrane library

Includes database of systematic reviews and central register of controlled

NICE Mobile Apps

<http://www.nice.org.uk/about/what-we-do/nice-apps-for-smartphones-and-tablets>

Evidence on the go!

20% of people who visit the NICE website do so using a mobile device ...

- All information on the **NICE website is mobile-enabled**, meaning it will resize / reformat to fit your device screen
- **Mobile apps** can be downloaded to access **guidelines** and **BNF / BNFC** offline



What now?

Get in touch with your local NHS library service



- Expert guidance from professional library staff
- Free research and information skills training
- Literature searches and document supply

Register for an NHS Athens account



- High quality evidence-based information at work and home



Find your local NHS Library Service

<http://www.hlisd.org>

NWASLKS
Knowledge for Life

IHCD Paramedic Programme



HLISD
Health Library & Information Services Directory

A to Z Browse

Library
Contact
Network



Helpdesk

Contact Us
FAQ's

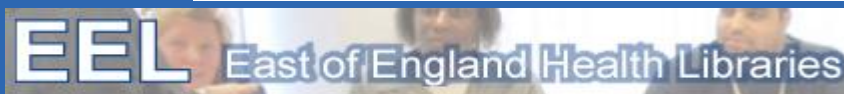
A To Z Browse

Browse by Library

A B C D E F G H I J K L M N O P Q R S T U V W X Y Z

Q

- Queen Alexandra Hospital Library Portsmouth
- Queen Elizabeth Hospital Birmingham Library
- Queen Elizabeth Hospital, Kings Lynn, Library & Knowledge Services
- Queen Elizabeth the Queen Mother Hospital Library
- Queen Margaret Hospital Library
- Queen Margaret University Learning Resource Centre
- Queen Mary's Hospital Library
- Queen Mary, University of London Medical School Library - West Smithfield Site
- Queen Mary, University of London Medical School Library - Whitechapel Site
- Queen Victoria Hospital Library
- Queen's University Biomedical Library
- Queen's University Medical and HSC Library



Delivering the **best** in care

University Hospitals **NHS**
Birmingham
NHS Foundation Trust

Thank you very much for your time

Questions?

Martin Elcock
Librarian Outreach
Queen Elizabeth Hospital Birmingham Library
0121 371 2487
martin.elcock@uhb.nhs.uk



To Recap...

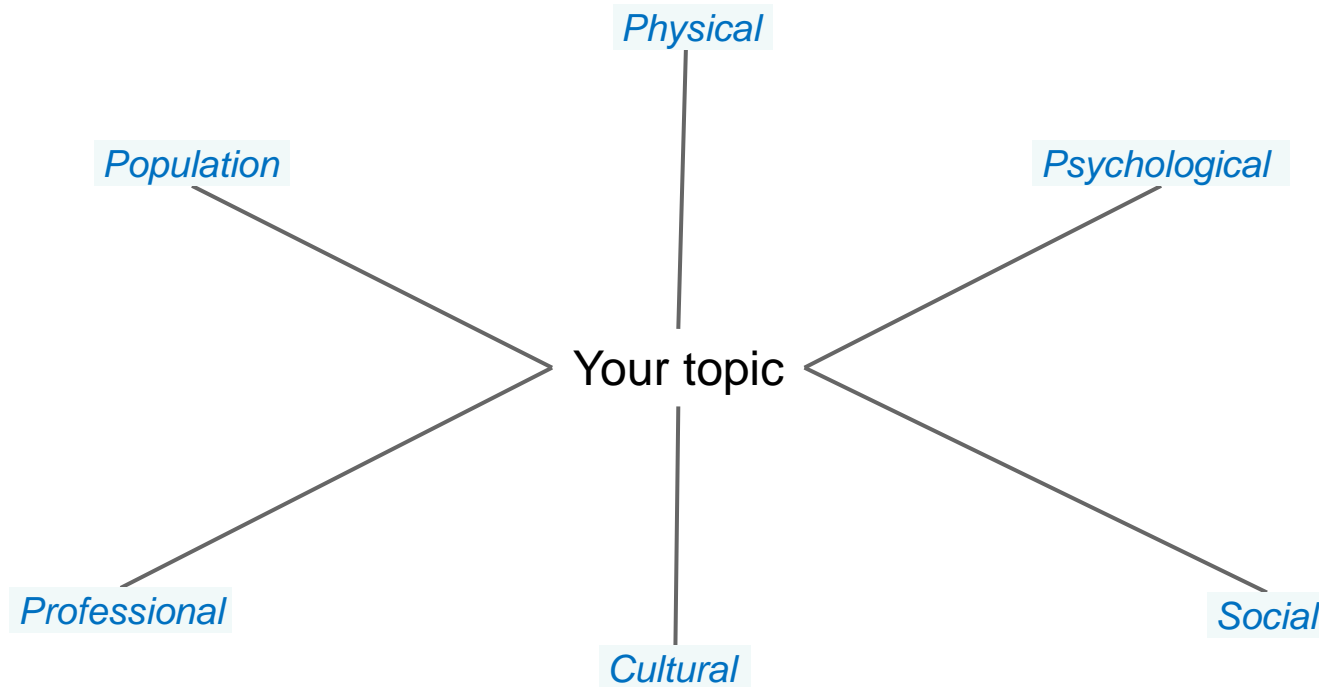


What now?



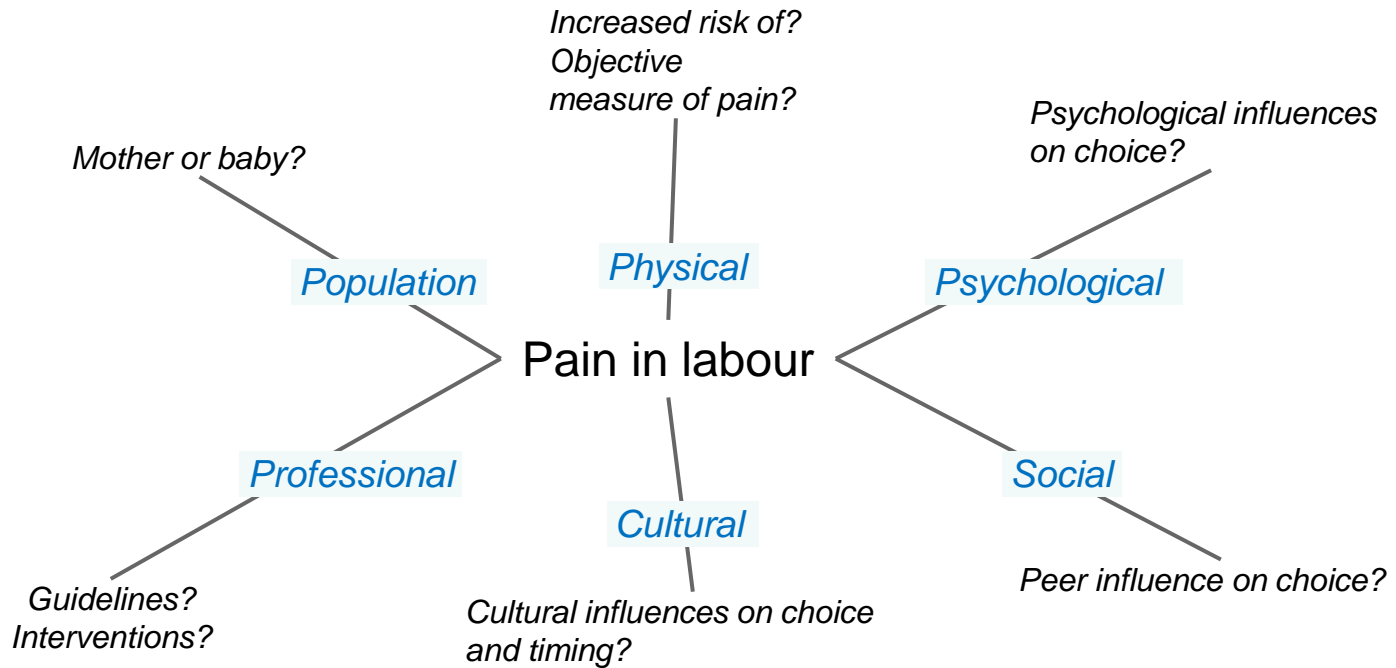
Map the topic

Consider the topic from different perspectives to help focus



Map the topic

Consider the topic from different perspectives to help focus



P.I.C.O.

Population – Who is it you are interested in?

Intervention – What is it you are interested in?

Counter Intervention / Comparison – Compared to what?

Outcome – What are you hoping for?

A PICO will help you construct a question and identify keywords

Activity 1

- Map your topic – or one of ours
- Construct a PICO
- Feedback

Suggested topics:

Parkinson's disease
Alzheimer's disease
Breastfeeding
Diabetes
Stuttering
Airways

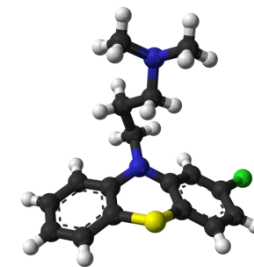
Keywords

Do adolescents demonstrate an improvement in behaviour as a result of taking Chlorpromazine for schizophrenia?

What are the potential keywords?

Adolescent
Schizophrenia
Chlorpromazine
Behaviour

Choosing keywords



Think about alternative terms that can be used to describe the same concepts:

Adolescent

Teenager

Young Person

Schizophrenia

Psychosis

Schizotypal

Chlorpromazine

Largactil (Europe)

Thorazine (U.S.A.)

Behaviour

Behavior

NMC

National Mouse Club

Nursing & Midwifery
Council

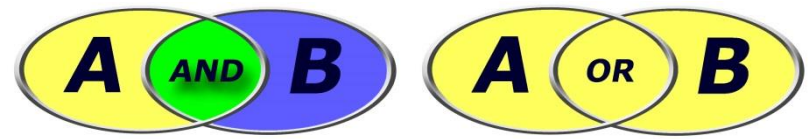


Activity 2

Keyword exercise

Revisit your topic to
generate keywords which
you could use in a search

Boolean Operators



Boolean Operators are: AND, OR

Used by all databases including Web search engines

OR is used when it does not matter which term is present as long as one is:

Chlorpromazine OR Largactil OR Thorazine

This will find any of the terms in a search wherever they appear.

AND is used when two or more terms have to appear together:

Chlorpromazine AND Randomized Controlled Trial

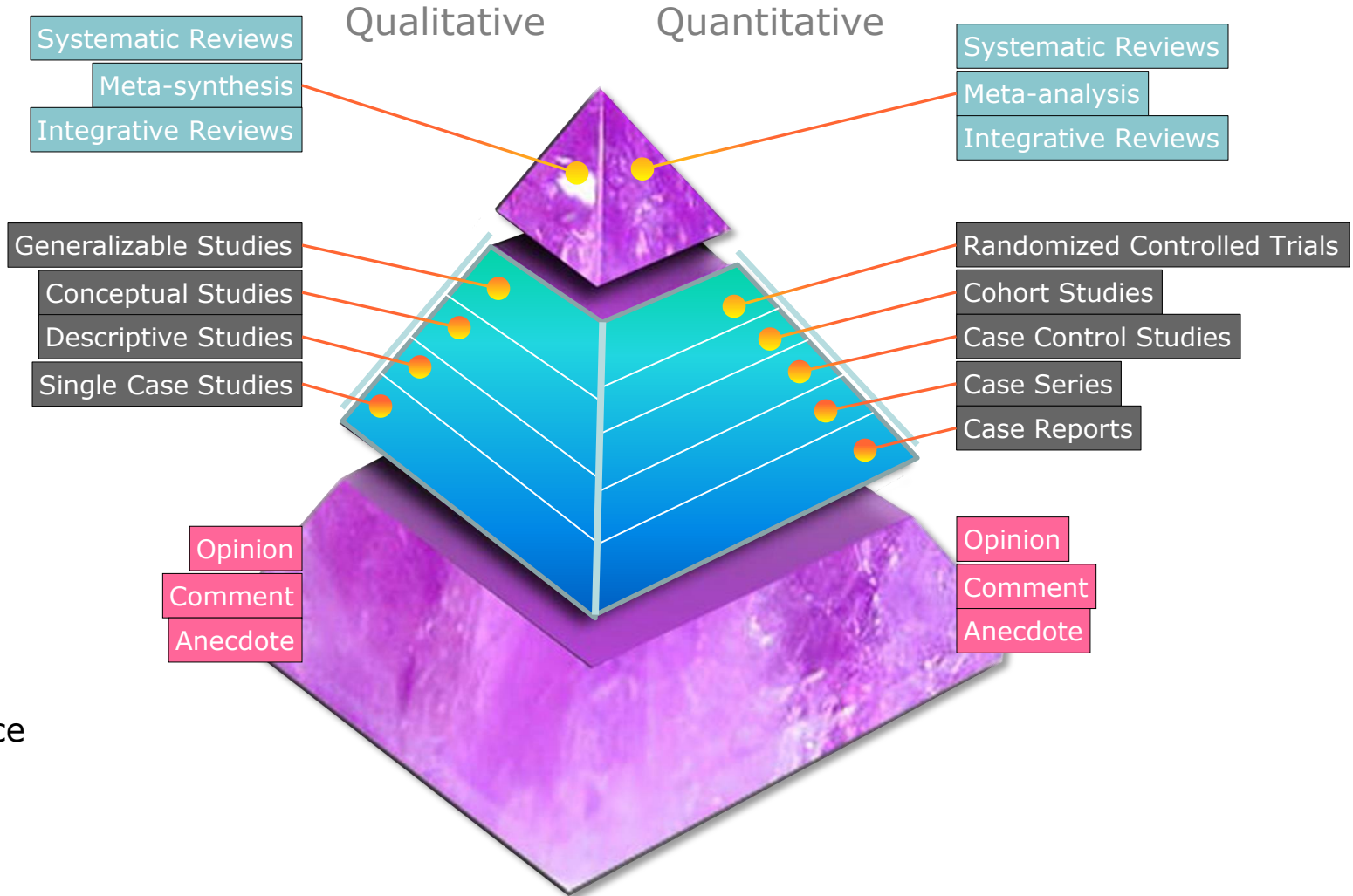
This will find both terms together in a search.

The evidence hierarchy

Greatest confidence



Least confidence
in practice



Evaluating sources

Basic questions to ask:

- ✓ Does it represent the most up-to-date evidence?
- ✓ Is the publication a reliable source of this information?
- ✓ Who wrote this?
- ✓ Is it research or research based?
- ✓ Is there a list of references or source material?

Could I make a safe clinical decision based on this information?

